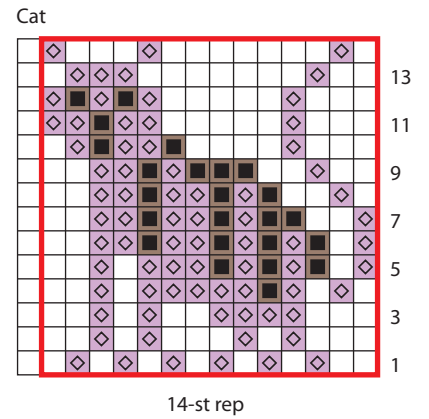
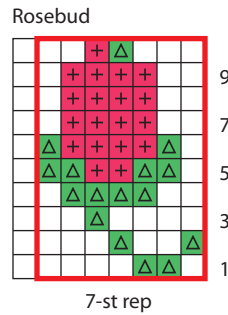
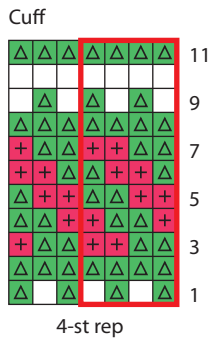
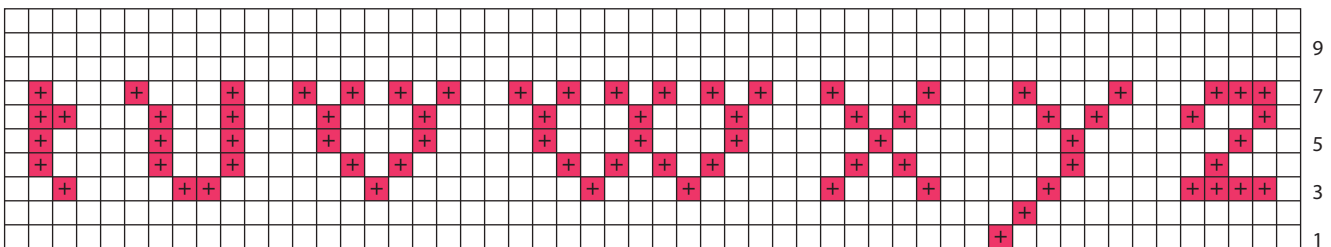
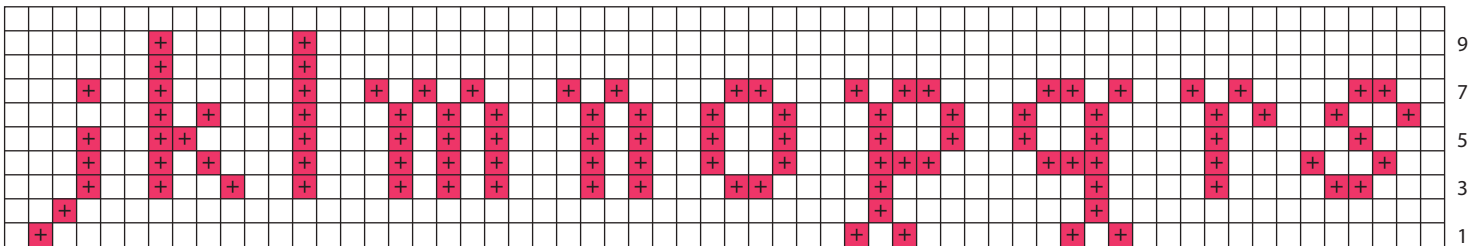
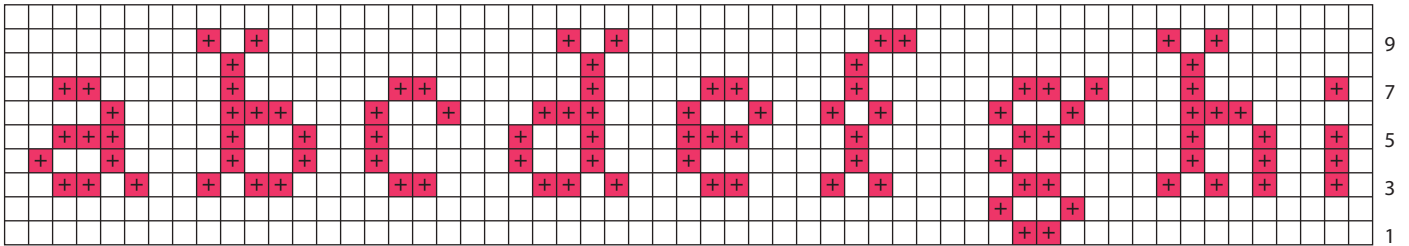


# Clara Barrows's Mittens to Knit

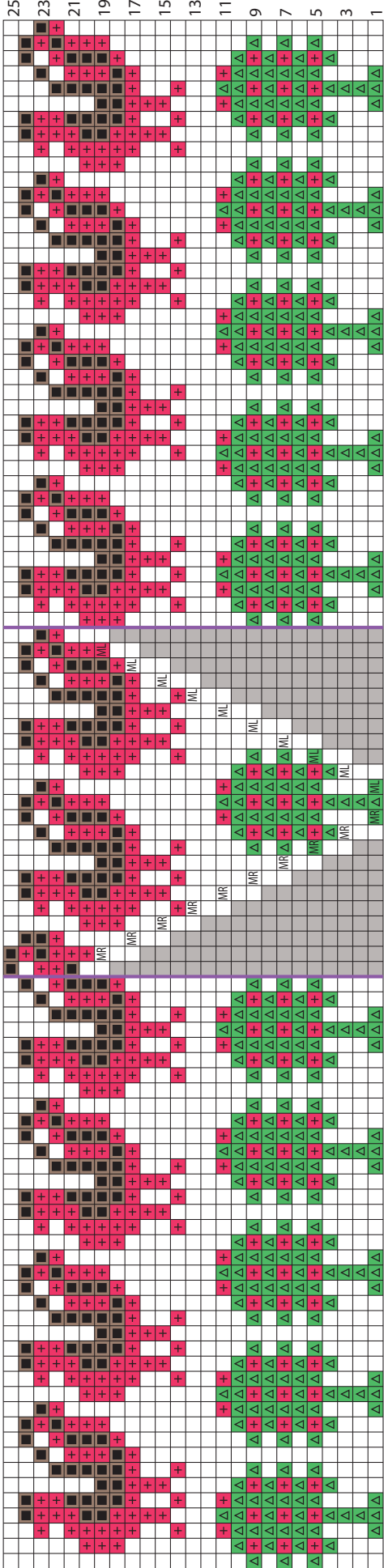
MARY LYCAN



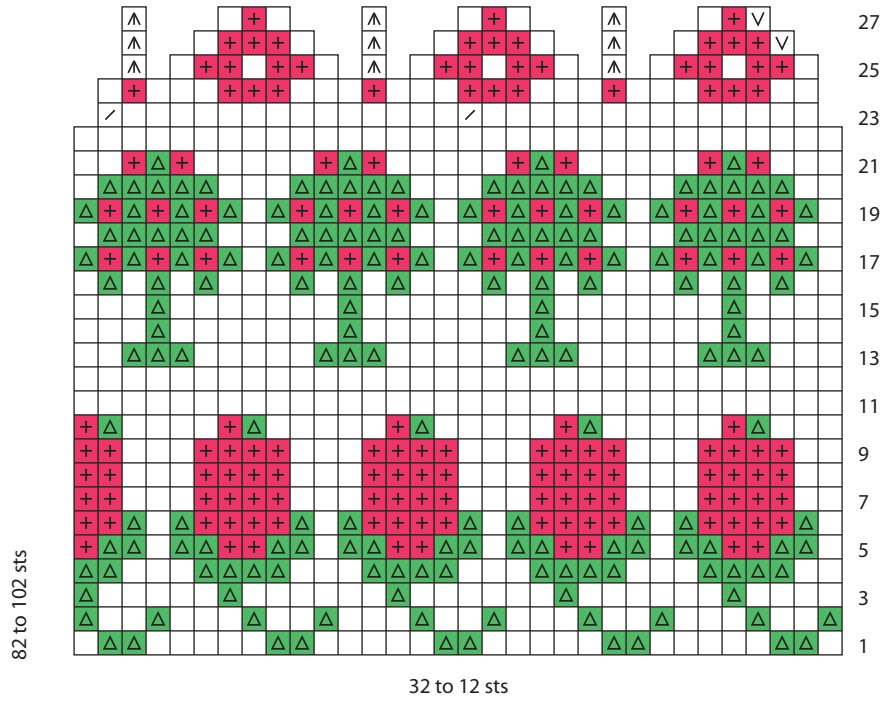
## Lowercase Alphabet



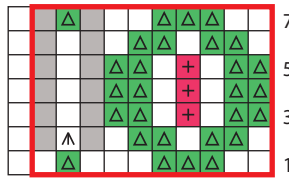
Marking alphabets and numbers from Mary Juliana Salter's sampler, which is dated 1804. The sampler is in the collection of the Connecticut Historical Society (2010.42.1).



Thumb

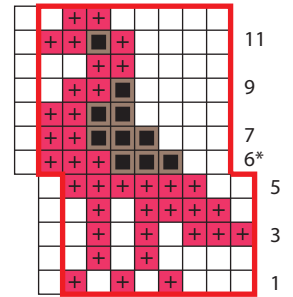


Wreath



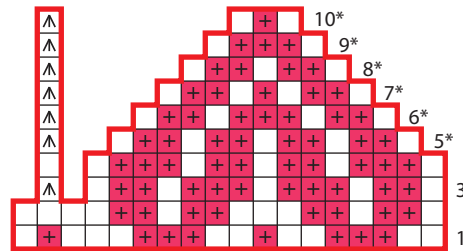
10- to 8-st rep

Bird



8-st rep  
\*Work as given in Instructions

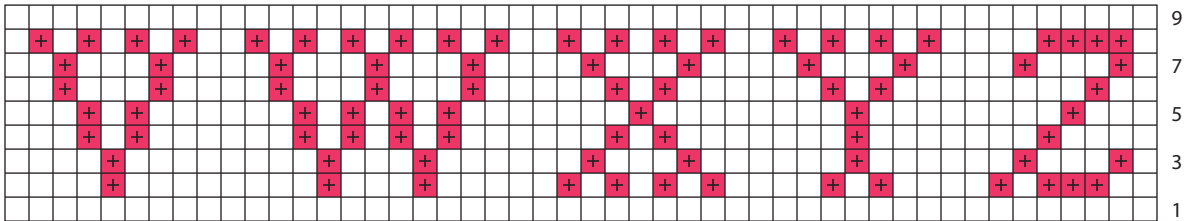
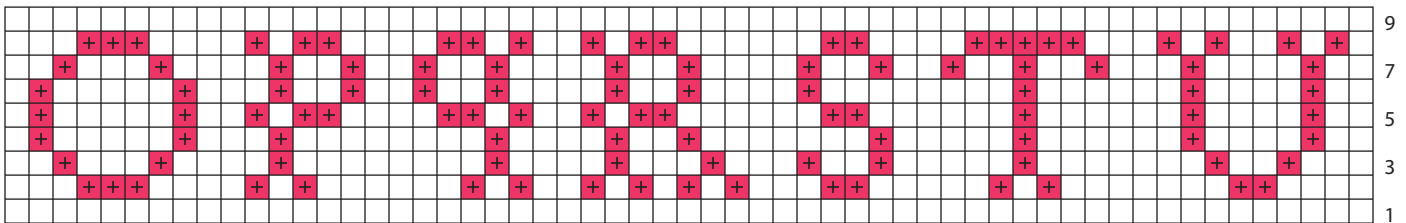
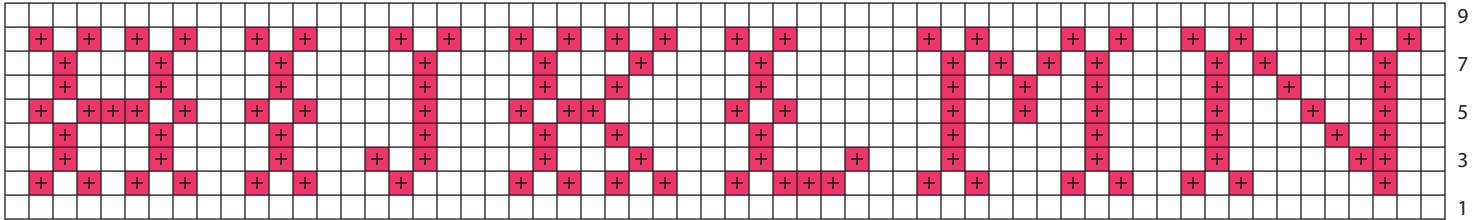
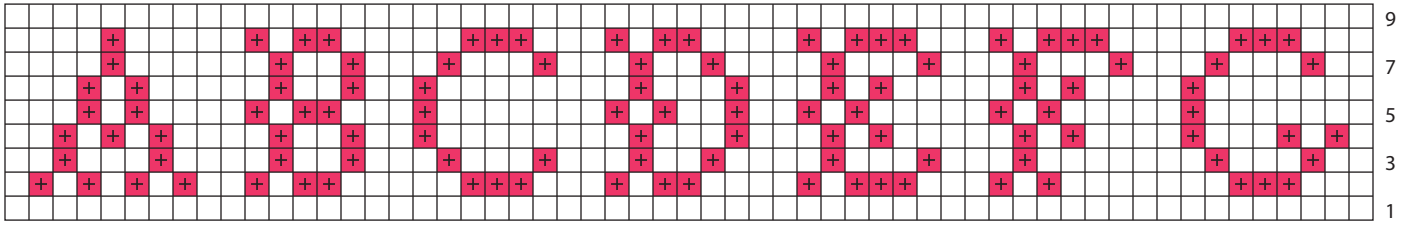
Heart



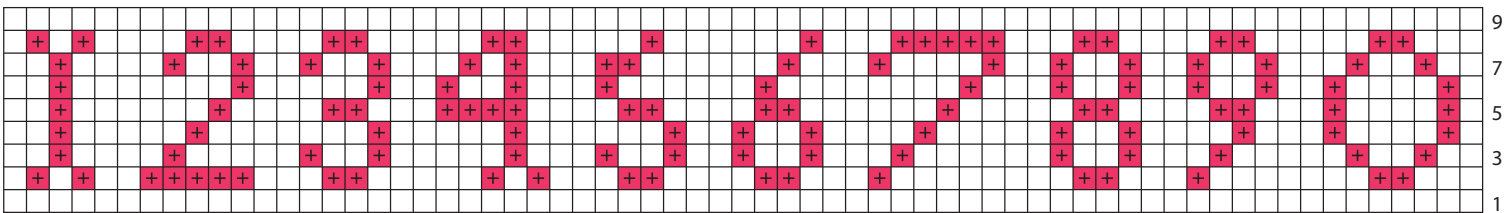
18- to 4-st rep  
\*Work as given in instructions

Thumb Gore

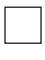
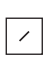





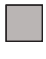
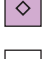







# Uppercase Alphabet



# Number



## Key

- |   |   |   |   |
|---|---|---|---|
|  | with MC, k  |  | with MC, k2tog                          |
|  | with CC1, k   |  | with MC, sl 2 as if to k2tog, k1, p2sso |
|  | with CC2, k   |  | sl st pwise to end of Needle 3          |
|  | with CC3, k   |  | no st                                   |
|  | with CC4, k   |  | patt rep                                |
|  |  |  | marker placement                        |
|  |  |  | with color indicated, LLI               |