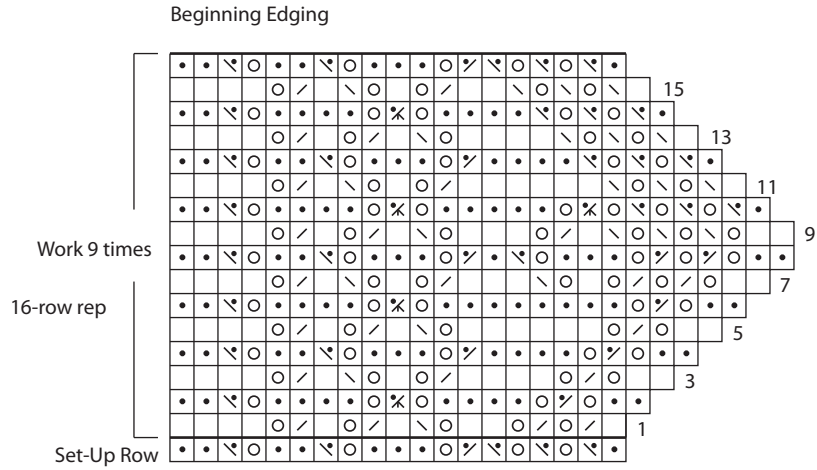


A Granny Cheyne Scarf to Knit

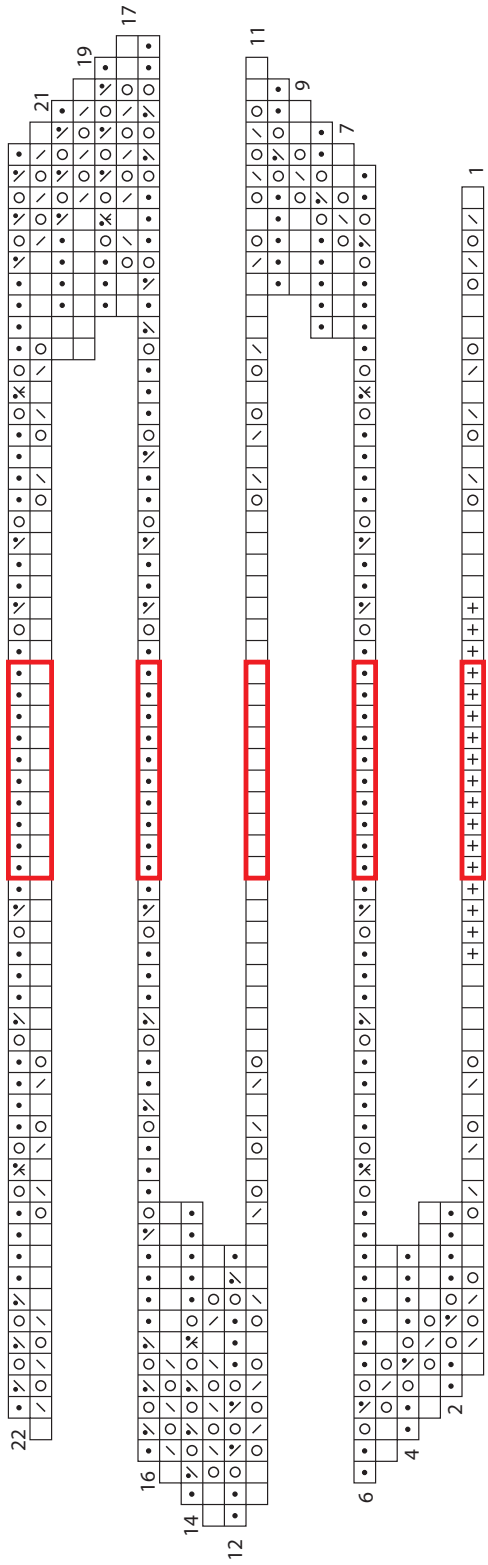
MARGARET STOVE



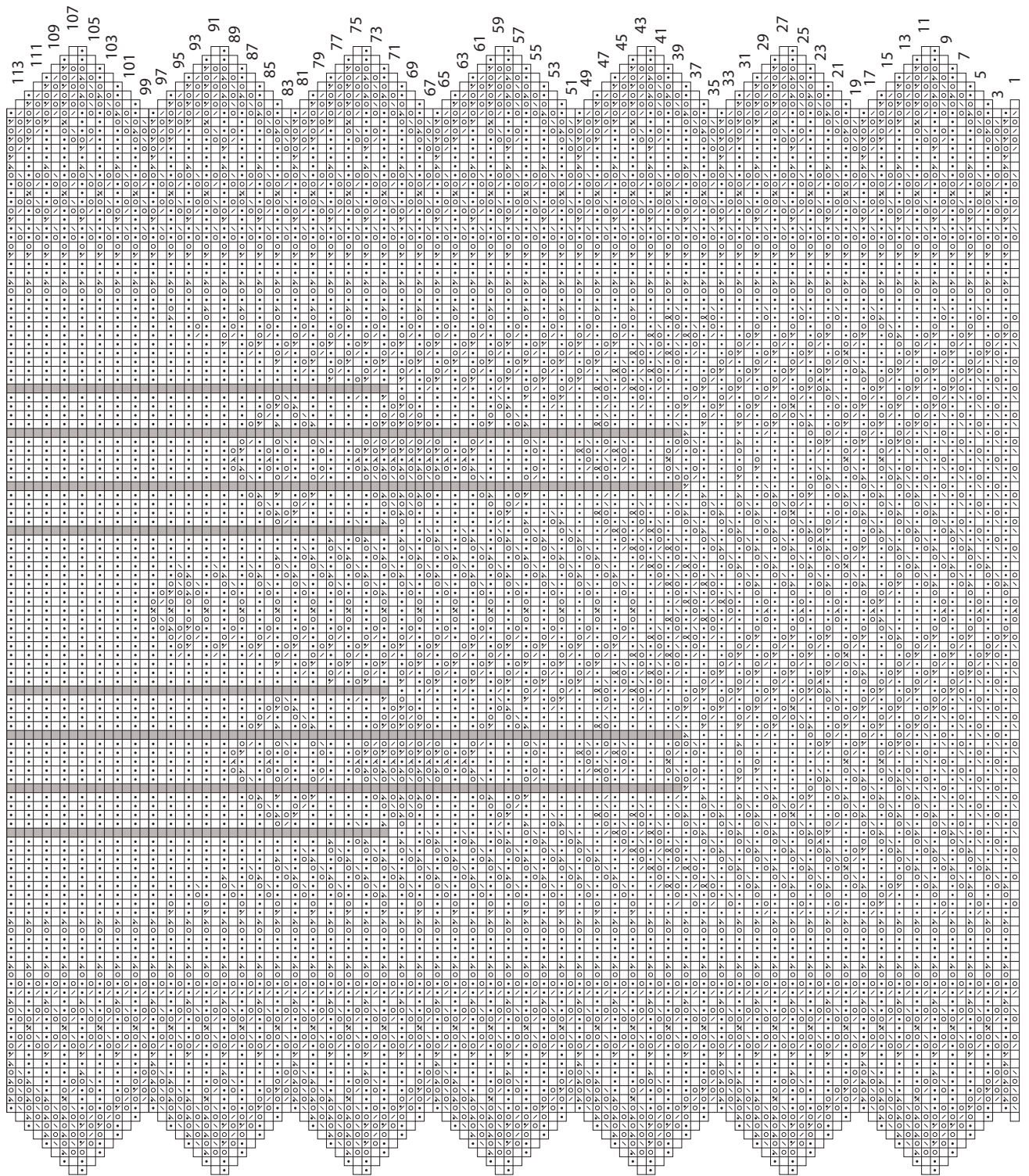
Key

- k on RS; p on WS
- p on RS; k on WS
- yo
- ⌘ k1tbl
- / k2tog on RS
- \ ssk on RS
- / k2tog on WS
- \ ssk on WS
- λ sl 1, k2tog, pssso on RS
- ⋈ sl 1, k2tog, pssso on WS
- ⋈ k3tog on WS
- + pick up and k 1 st from straight edge of edging
- no st
- patt rep

Corner



Body



Work 12 times

16-row rep