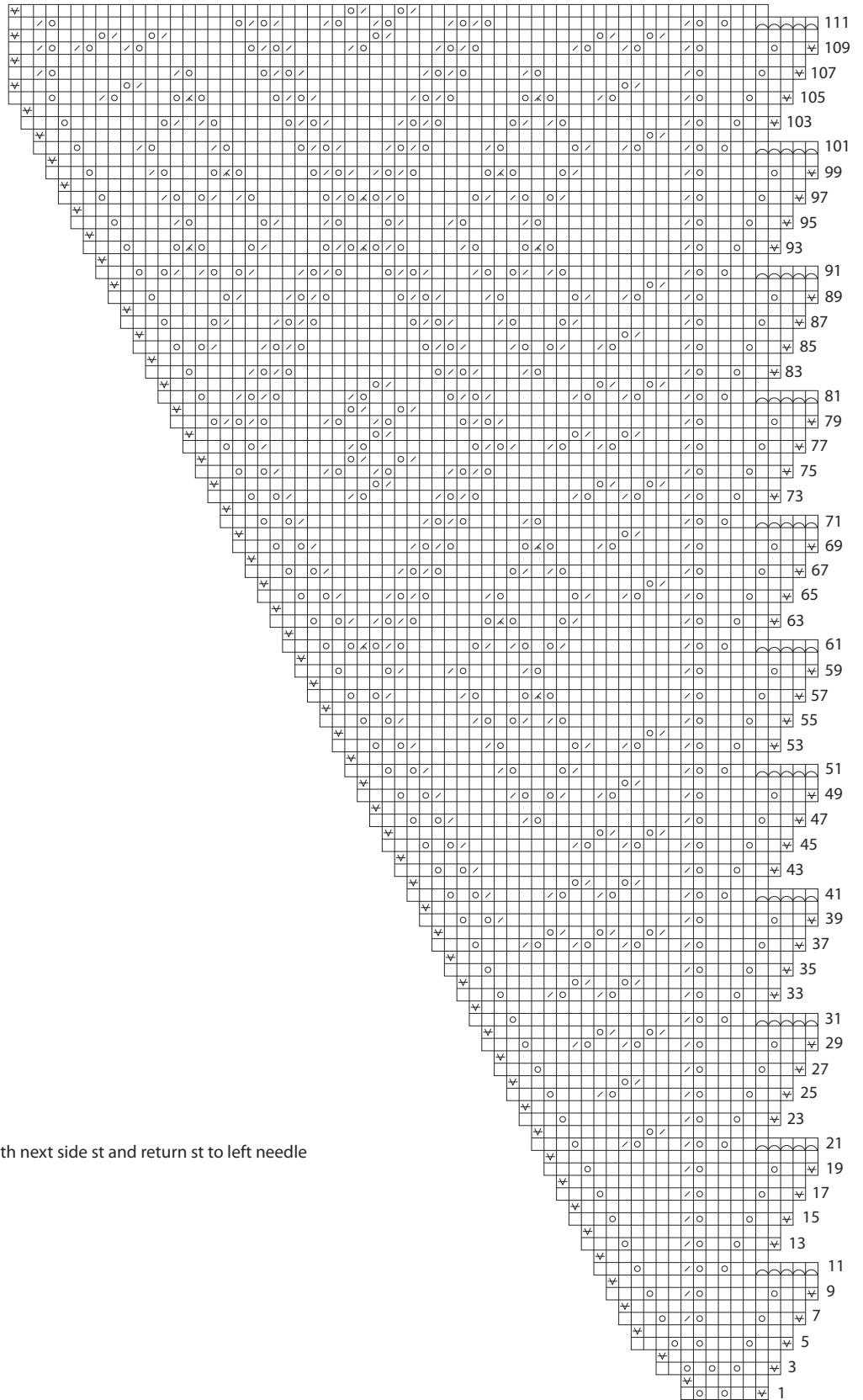



An Orenburg Warm Shawl to Knit

GALINA A. KHMELEVA

Border Increase—REVISED



Key

 k on RS and WS

 yo


 k2tog

 sl 1 pwise wyf

 k3tog

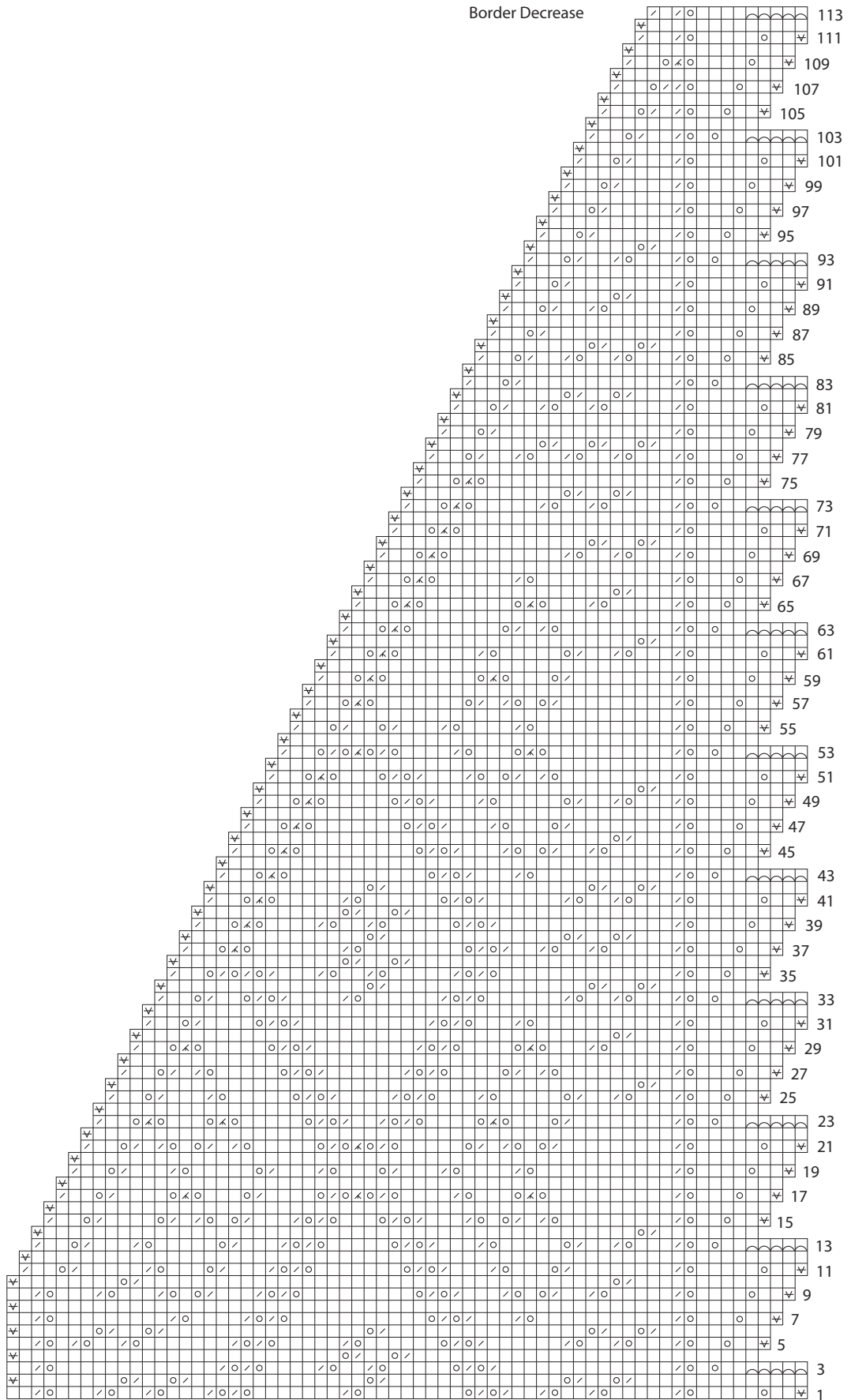
 BO 1 st

 k last body st tog with next side st and return st to left needle

 patt rep

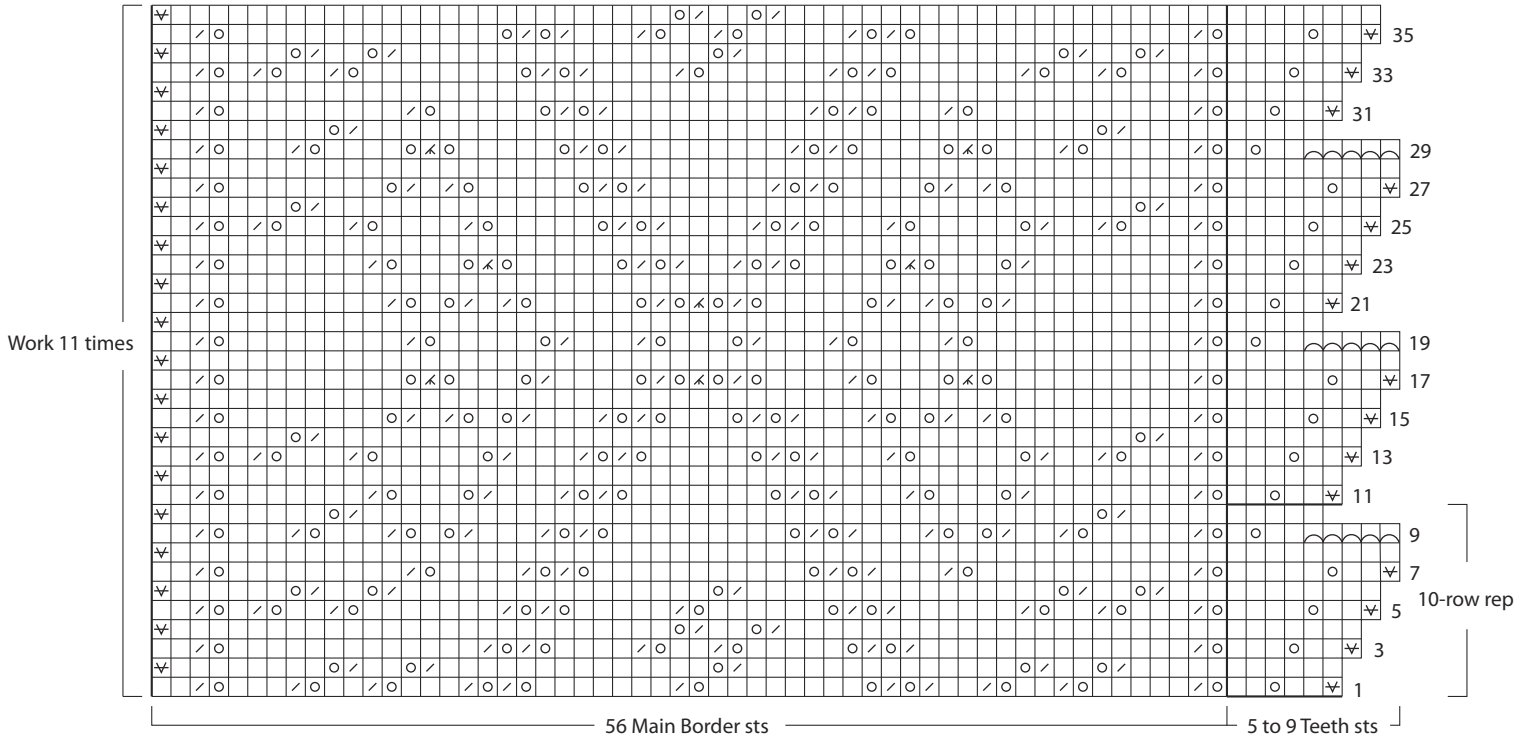
5 inc'd to 60 sts

Border Decrease

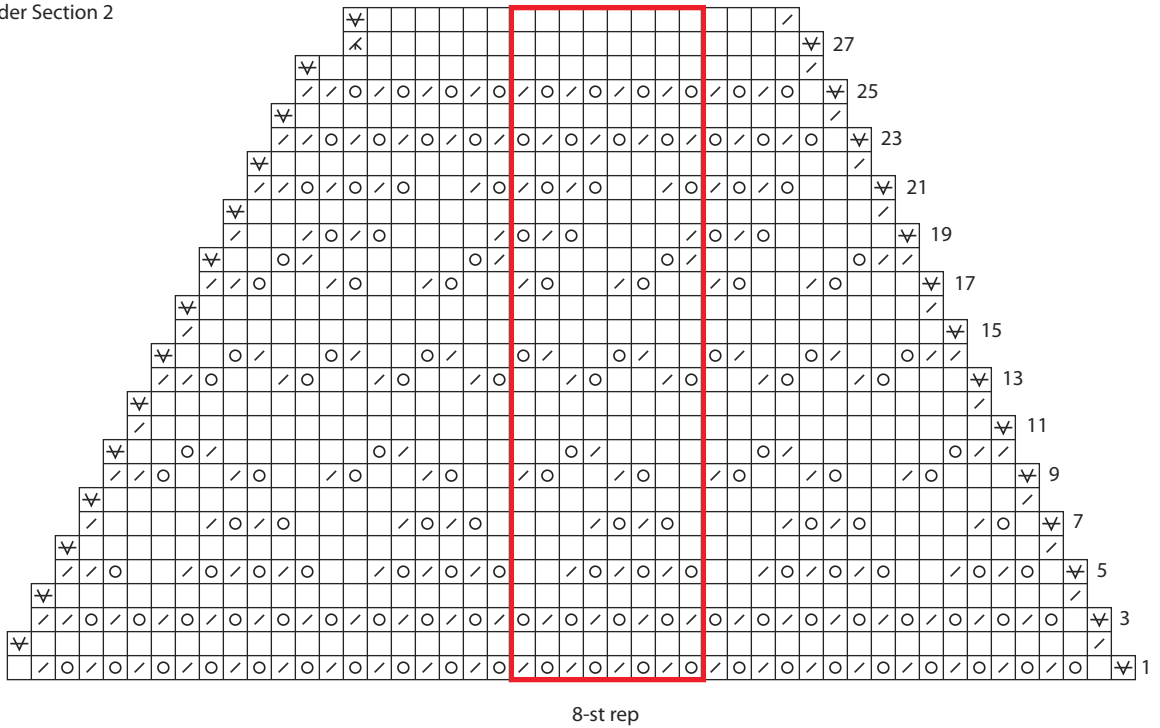


65 dec'd to 7 sts

Border Section 1



Border Section 2



Body

