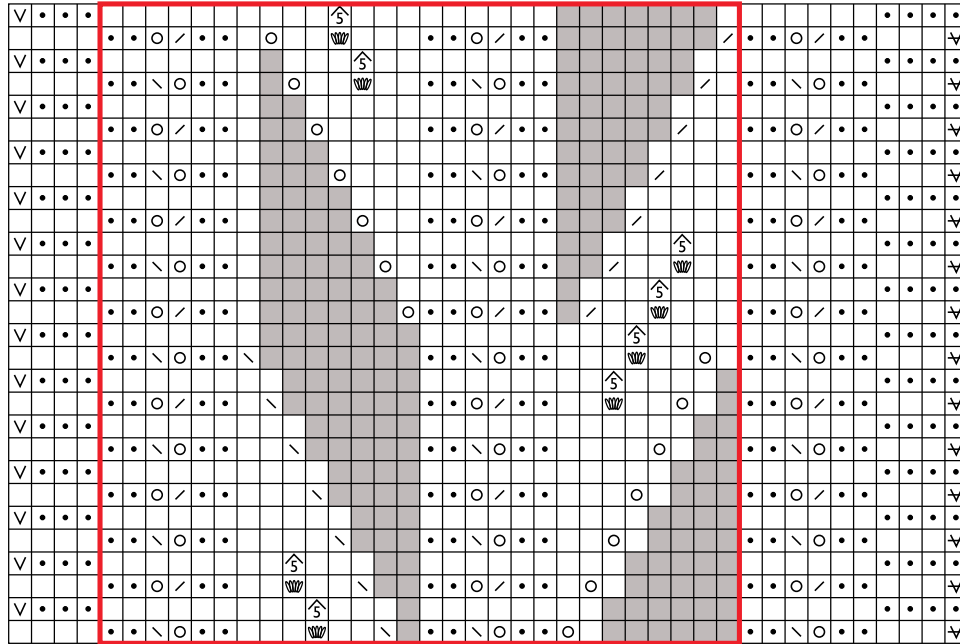


Ulla's Scarf to Knit

NANCY BUSH

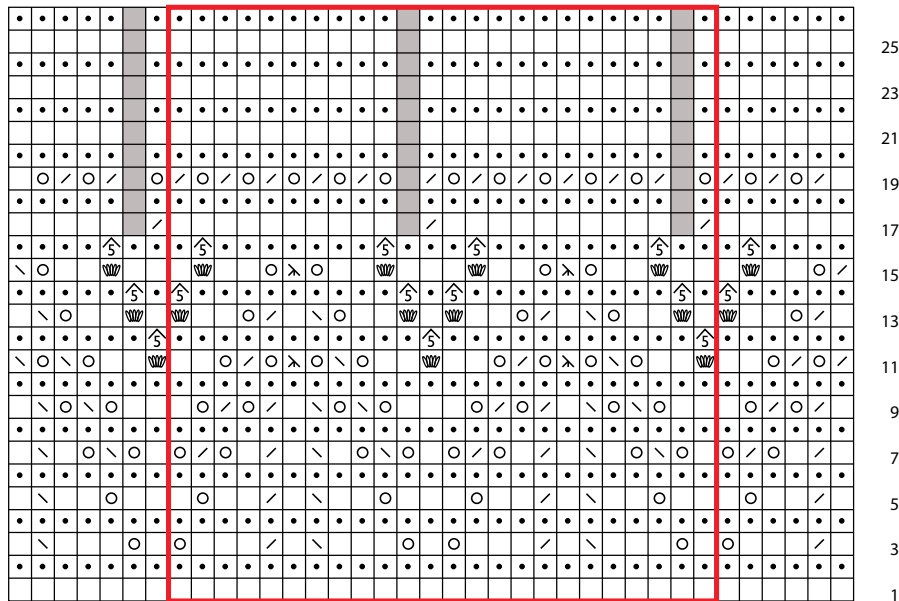
Lily and Leaf



21-st rep

- 27 k on RS; p on WS
- 25 p on RS; k on WS
- 23 yo
- 21 k2tog
- 19 ssk
- 17 sl 1 kwise, k2tog, pssso
- 15 sl 1 pwise wyf on RS
- 13 sl 1 pwise wyf on WS
- 11 nupp (see Stitch Guide)
- 7 p5tog on WS
- 5 no stitch
- 3 pattern repeat
- 1

Scalloped Edging



24-st to 22-st rep