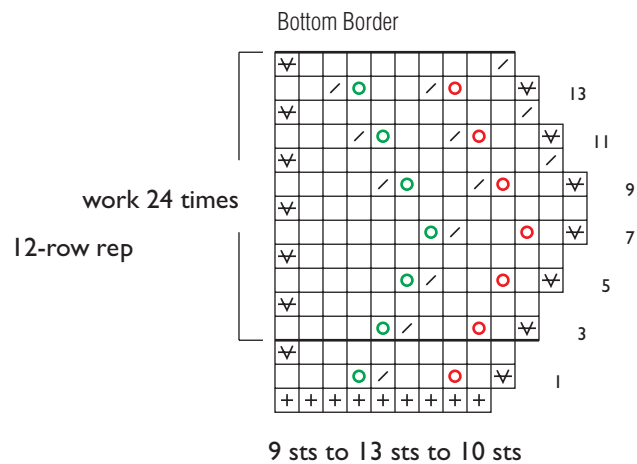
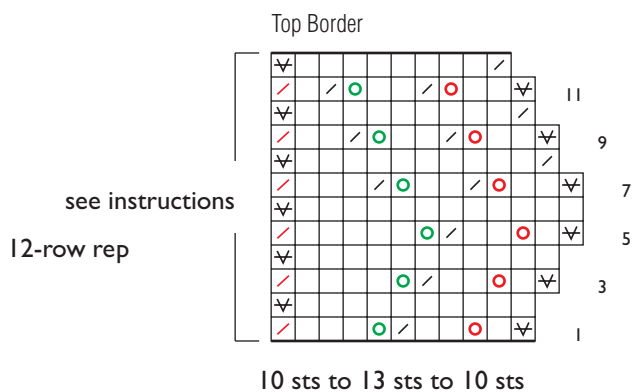


Valentina's Polushawl to Knit

GALINA A. KHMELEVA

Key

- k on RS and WS
- ↘ sl 1 pwise wyf on RS and WS
- yo (diagonals motif)
- yo (hearts and strawberries motifs)
- / k2tog on RS and WS
- ↙ k3tog
- + CO 1 st
- ∞ k1tbl
- k1 and place back on left needle
- do not work last st
- × pick up 1p and k tog with next st
- no st
- / k2tog (1 border st and 1 body st), turn
- marker position



Body

