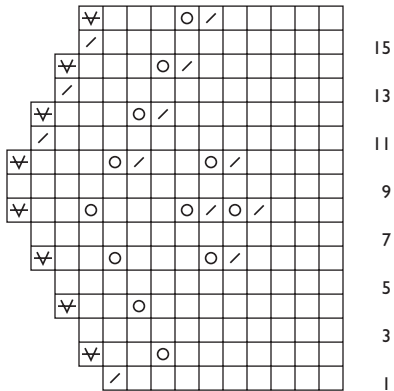


Very Berry Scarf to Knit

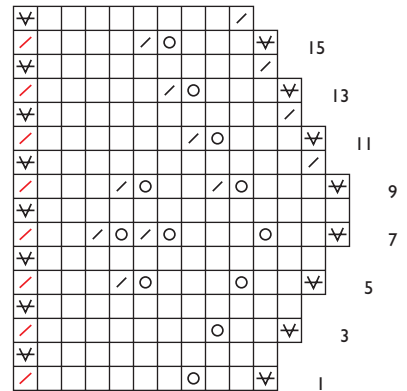
ALLA POSTELNIK

Left Border



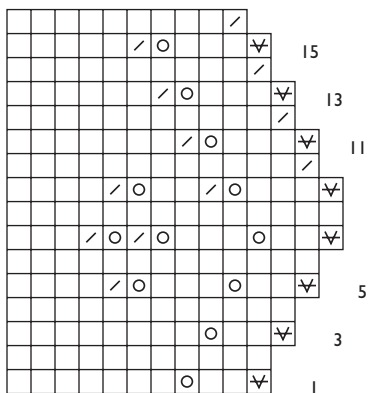
11 sts to 14 sts to 11 sts

Top Border



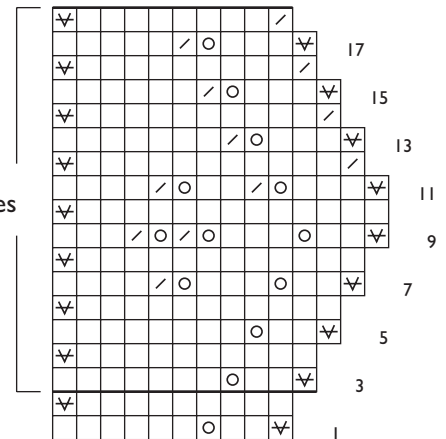
10 sts to 14 sts to 10 sts

Right Border



10 sts to 14 sts to 10 sts

Bottom Border









9 sts to 14 sts to 10 sts

work 5 times

16-row rep

Key

-  k on RS and WS
-  sl 1 pwise wyf on RS and WS
-  yo
-  k2tog on RS and WS
-  k3tog
-  k2tog (1 border st and 1 body st), turn

