

# Nancy's Knitting Bag Lining to Sew

KATHY AUGUSTINE

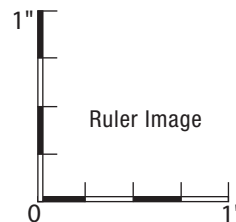


## How to work with this pattern PDF

### Print the PDF

1. Open this pattern sheet PDF pages using Adobe Acrobat Reader X or higher. This is a free download available at <http://www.adobe.com/products/reader.html>  
2. When preparing to print the PDF, make sure that you are printing it at "Actual Size" (100%) and that there is no scaling. Check the settings for page scaling (should be "None") and check the preview to make sure that you will be printing at full size. Make sure that the box labeled "Auto-Rotate and Center" is unchecked. (These instructions apply specifically to Adobe Reader. If you're using another PDF reader, check for similar settings.)

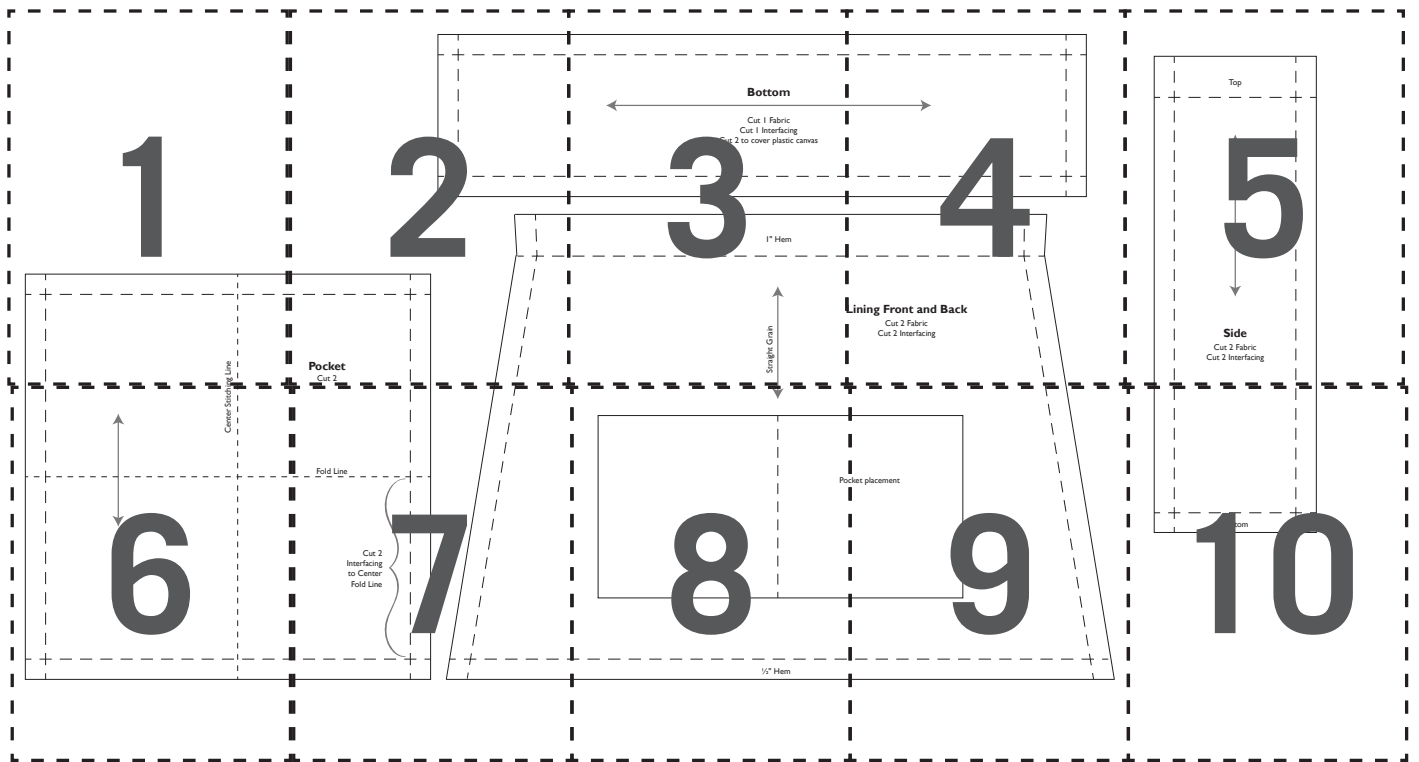
3. To ensure that the pattern prints at the correct scale, start by printing only this first page (Page 1), and check the size of the 1" ruler image. The ruler image should measure 1" x 1" (2.5 cm x 2.5 cm).

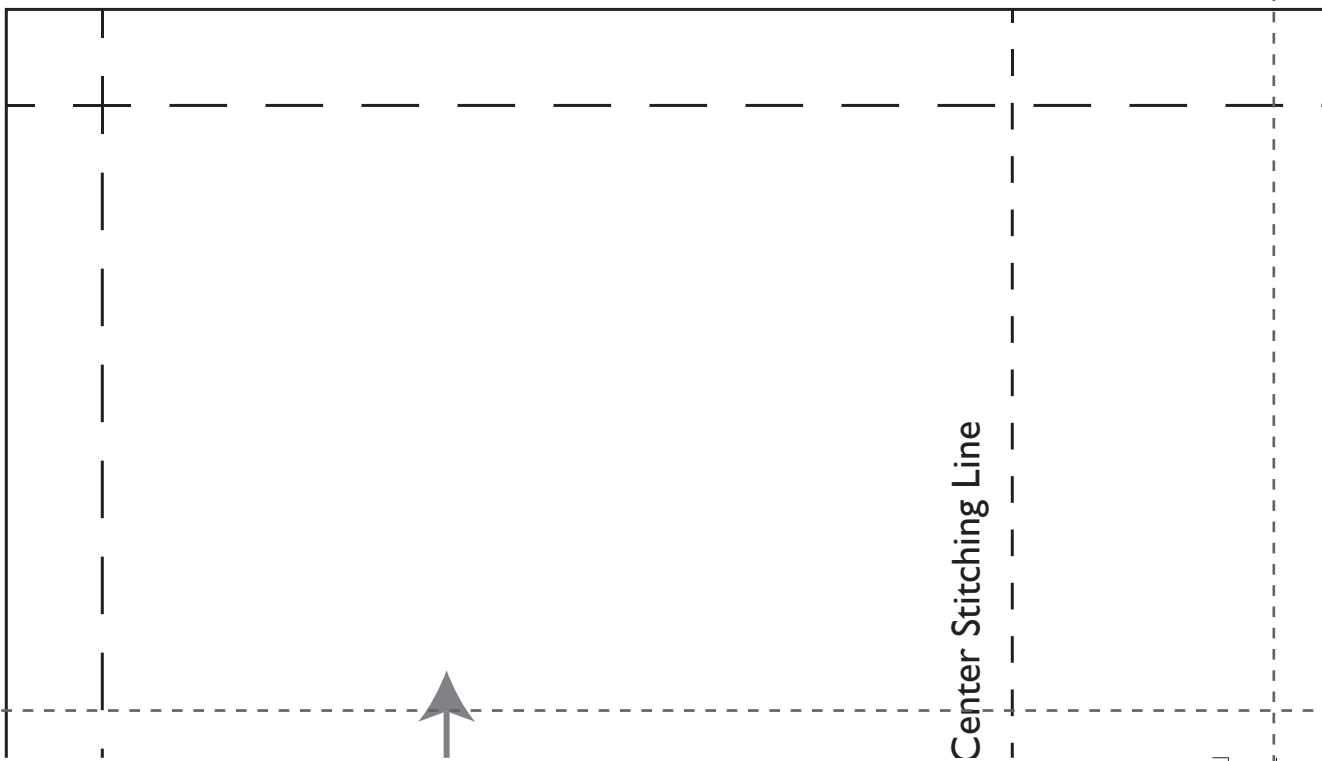


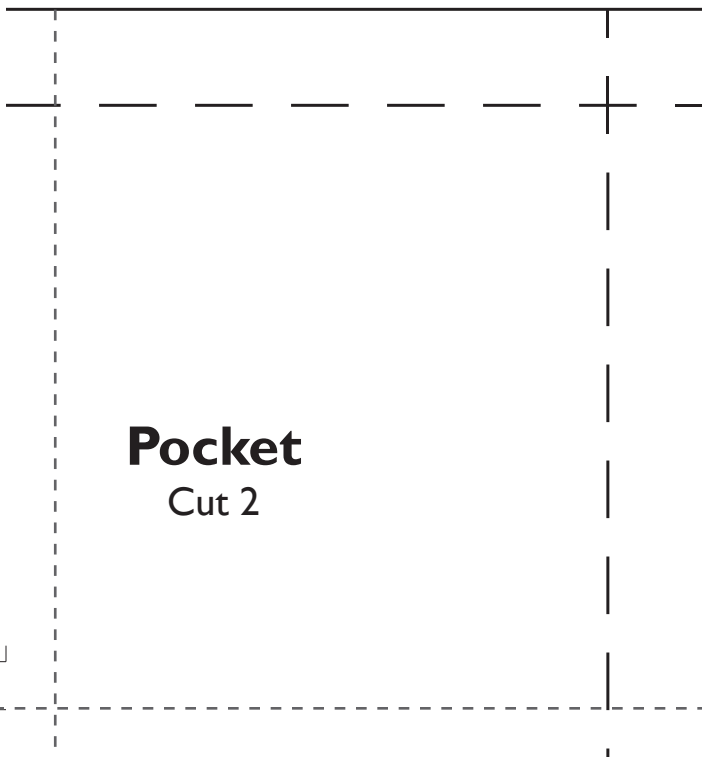
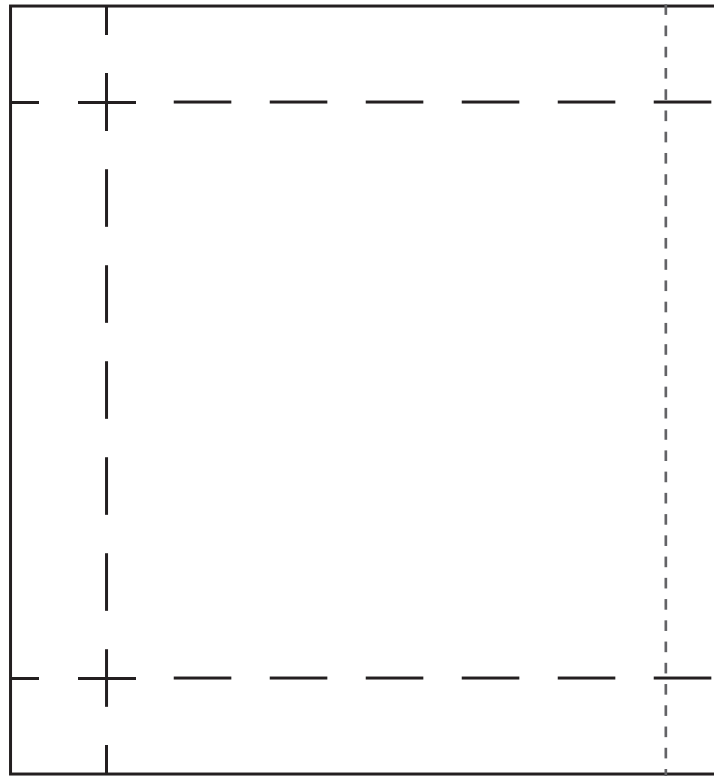
4. Print the remaining pattern sheet PDF pages once you've confirmed the size of the ruler image.

### Assemble the PDF

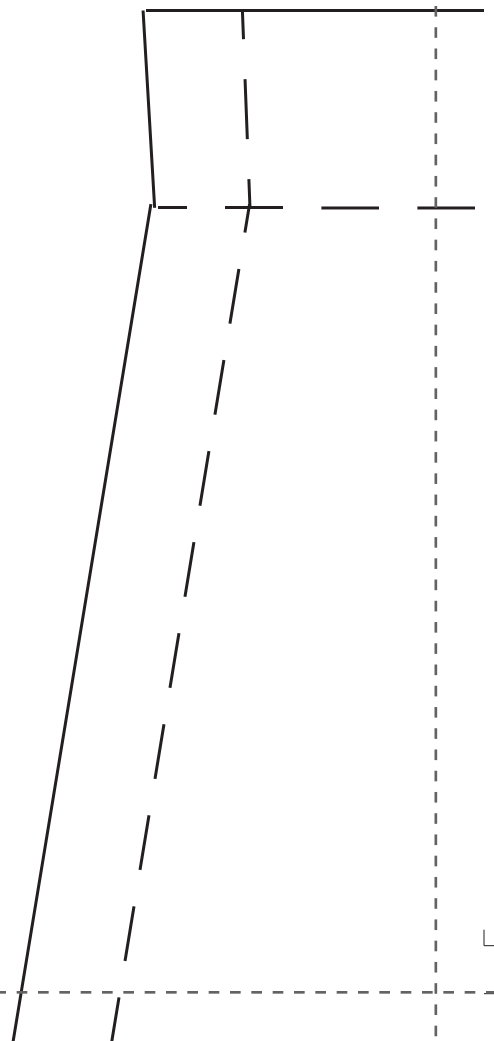
1. Cut off or fold back the dotted margin around each page.  
2. Begin assembling each pattern sheet by lining up the page edges and taping them together. Use the illustrated guide on the following page (Page 2) to match each piece properly.







**Pocket**  
Cut 2



**Bottom**



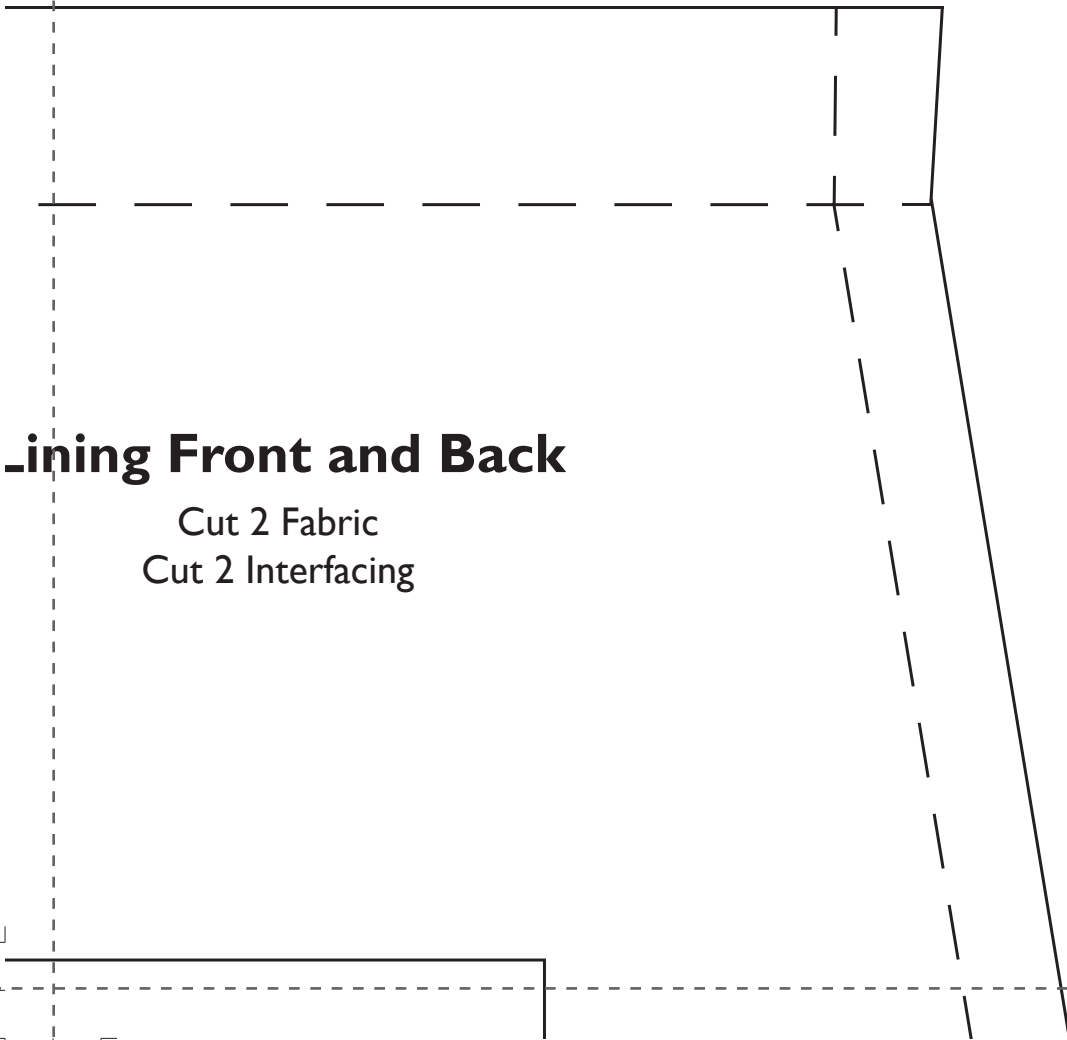
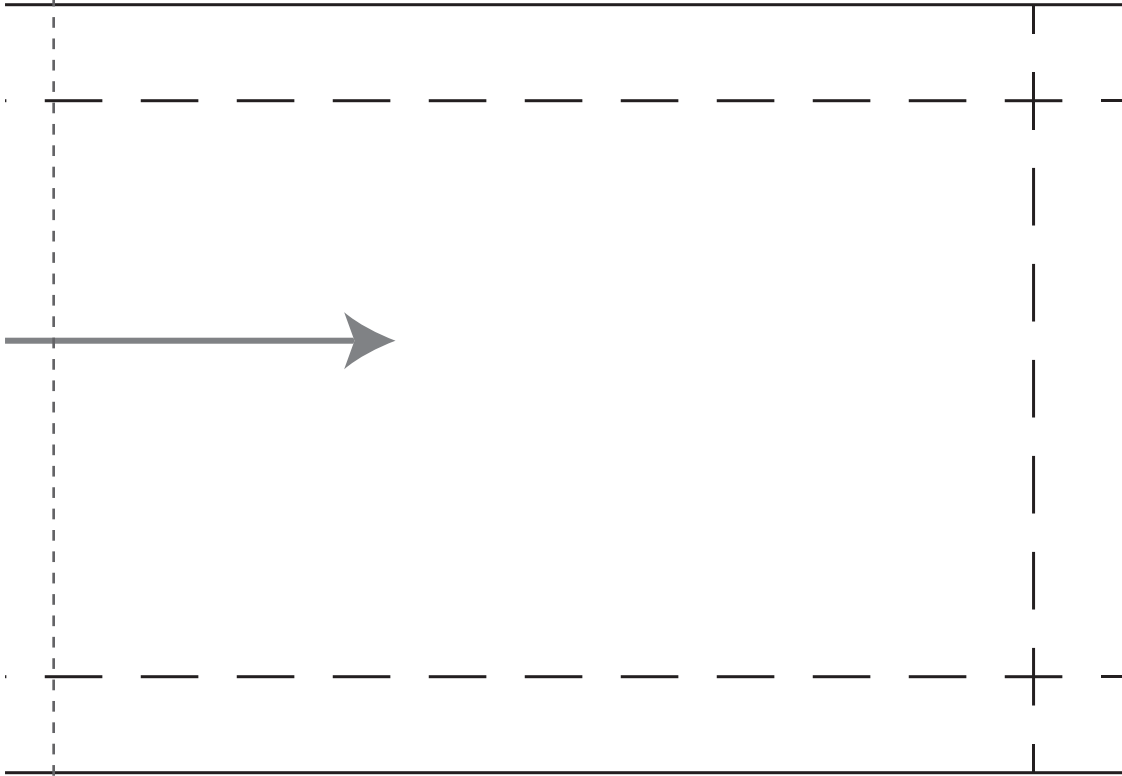
Cut 1 Fabric  
Cut 1 Interfacing  
Cut 2 to cover plastic canvas

1" Hem

**Linir**

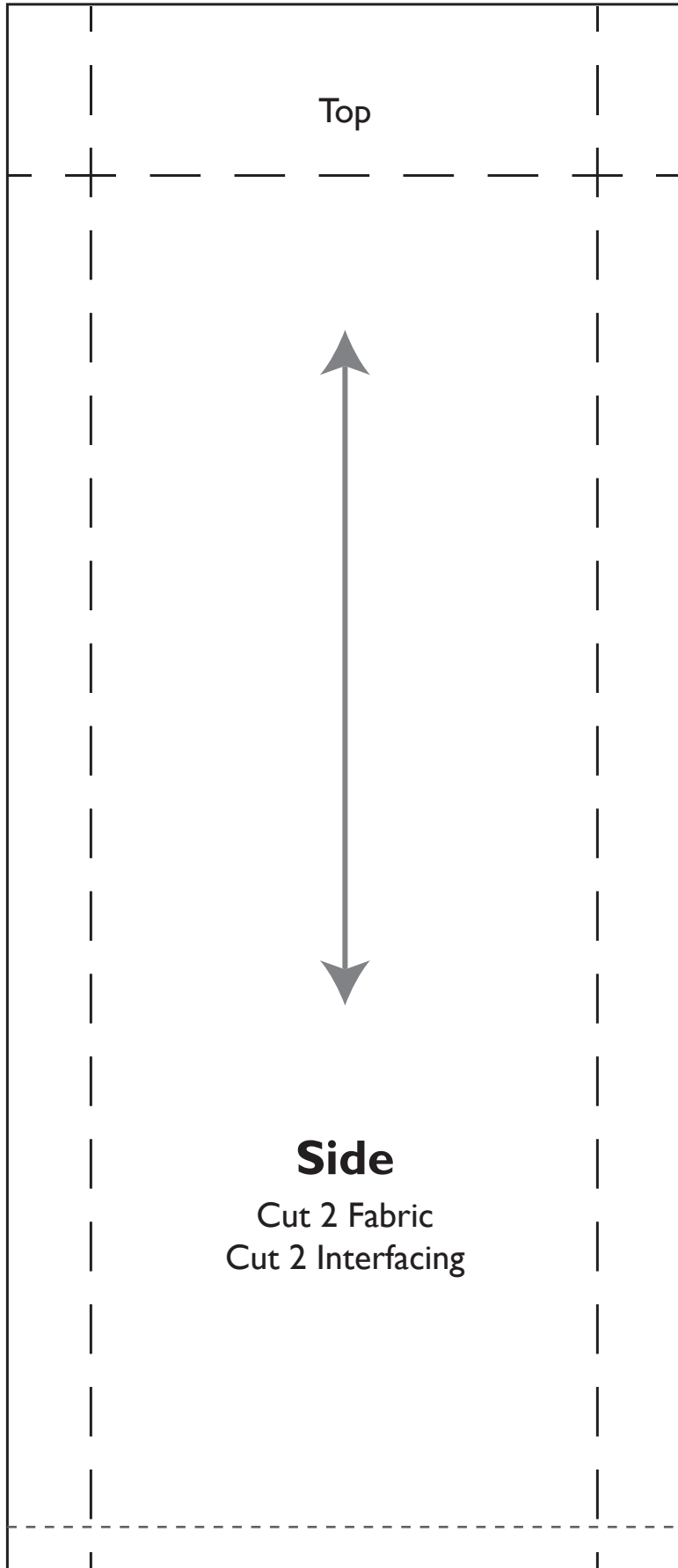
Straight Grain





## Lining Front and Back

Cut 2 Fabric  
Cut 2 Interfacing



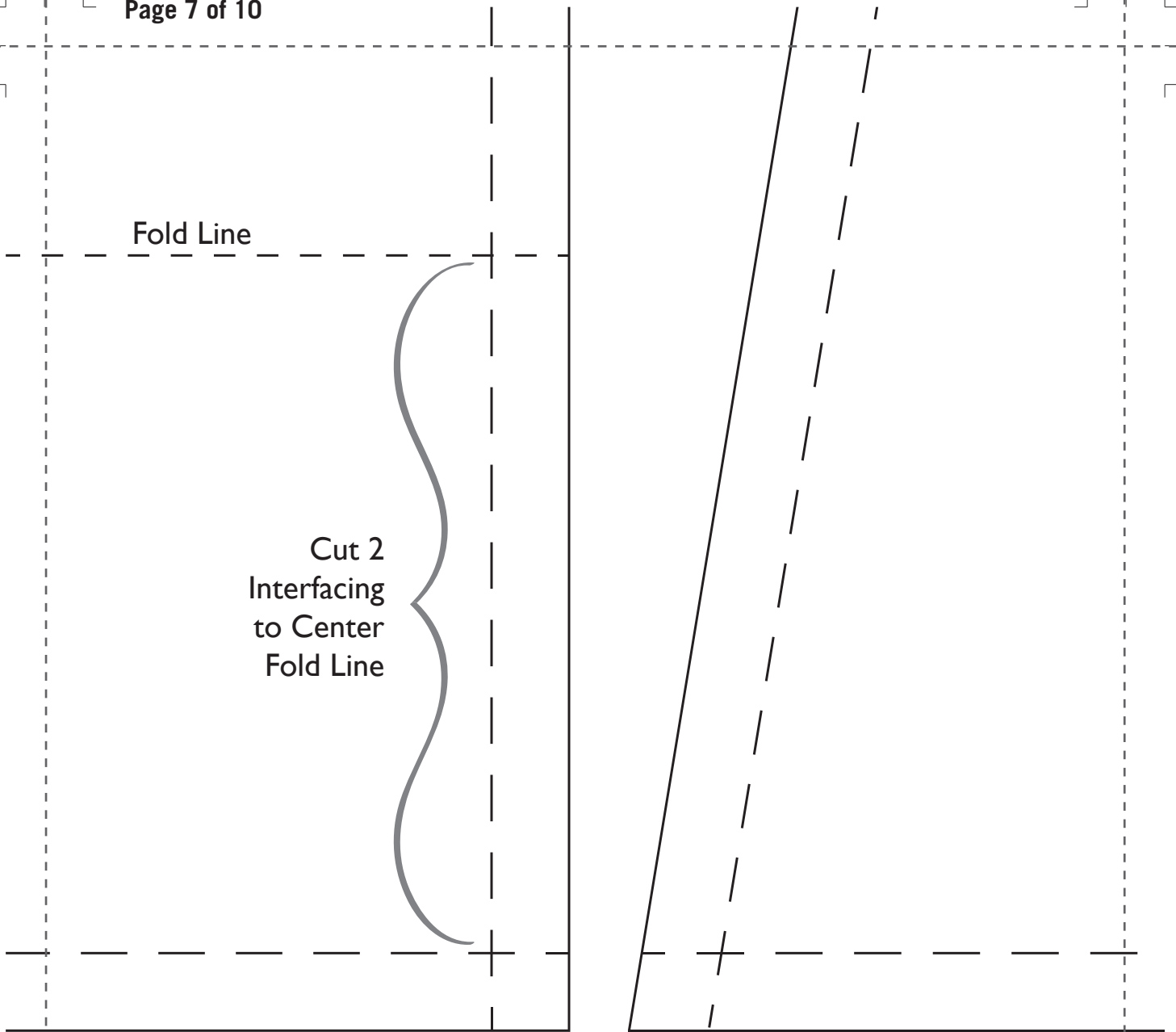
Center





Fold Line

Cut 2  
Interfacing  
to Center  
Fold Line



Pocket p

1/2" Hem

cket placement

