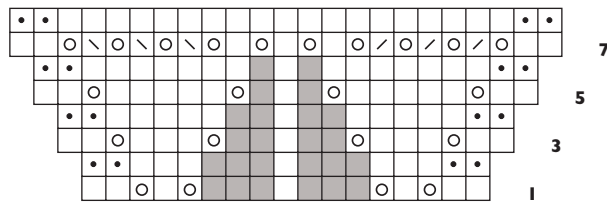


# Sunna Lace Shawl to Knit

EVELYN A. CLARK

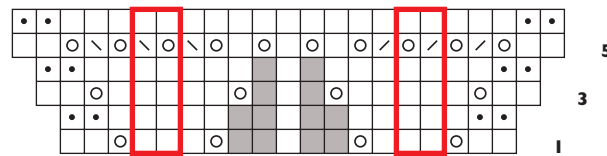
Eyelet Beginning



center st

7 sts inc'd to 23 sts

Eyelet Repeat



2-st rep

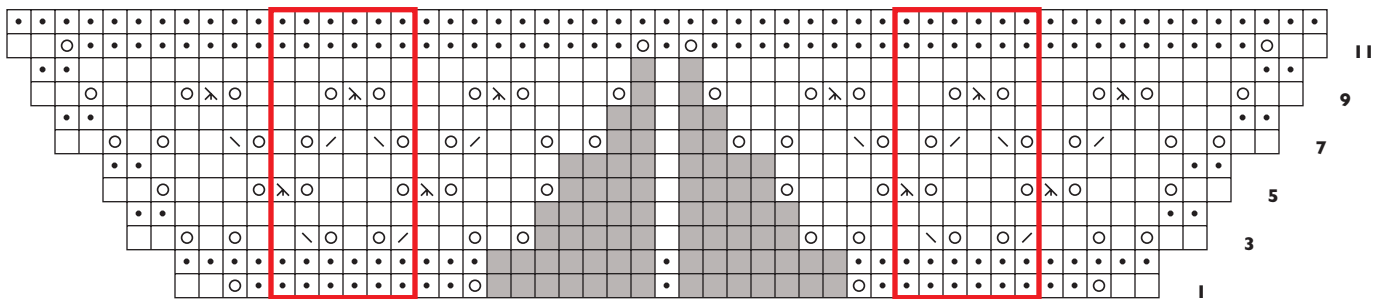
center st

2-st rep

Key

- k on RS; p on WS
- p on RS; k on WS
- yo
- / k2tog
- \ ssk
- λ sl 1, k2tog, pss0
- no st
- patt rep

Spider Border

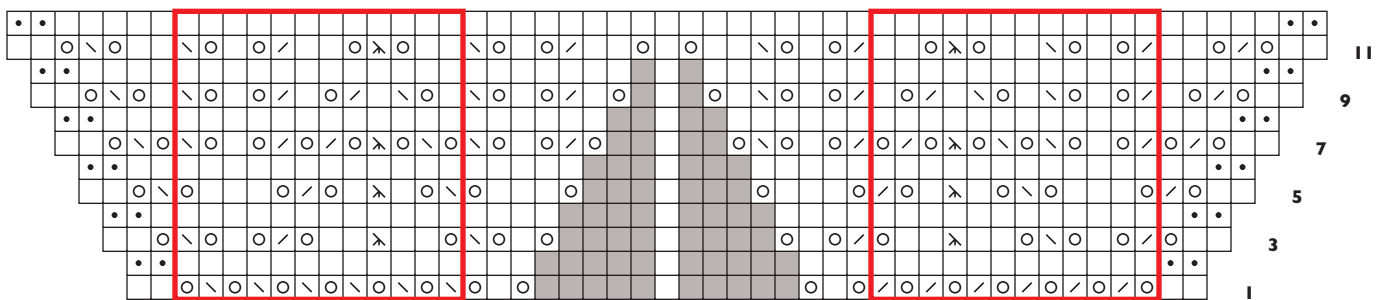


6-st rep

center st

6-st rep

Flower and Leaf Edging



12-st rep

center st

12-st rep