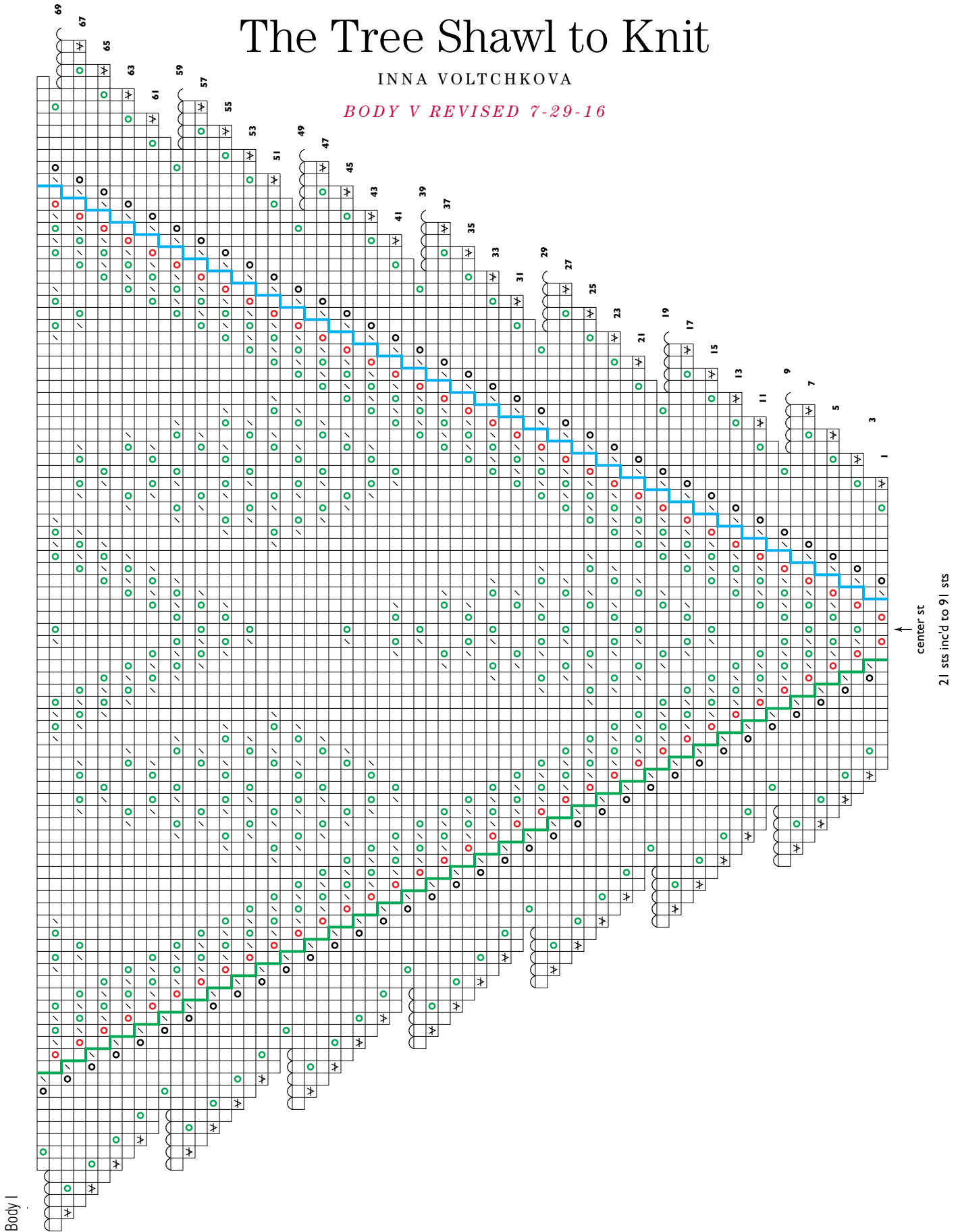


# The Tree Shawl to Knit

INNA VOLTCHKOVA

*BODY V REVISED 7-29-16*



Body I

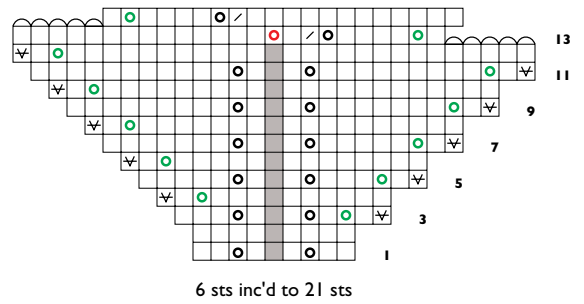
center st

21 sts incl'd to 91 sts

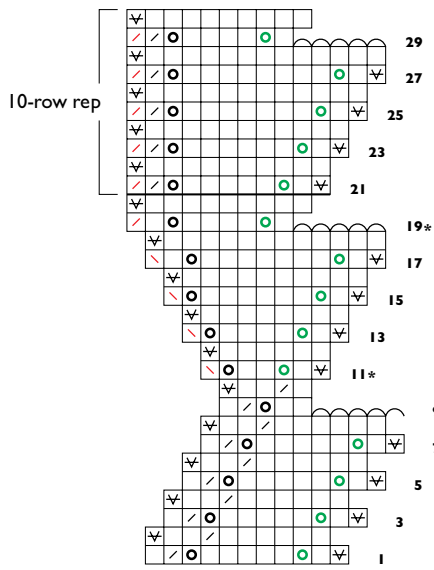
Key

- k on RS and WS
- yo
- yo (diagonals motif; teeth edge increases)
- yo (increases)
- sl 1 pwise wyf on RS and WS
- k2tog on RS and WS
- k2tog on RS and WS (last st of edging tog with 1 shawl st)
- k2tog tbl on RS and WS (last st of edging tog with 1 picked-up st)
- BO 1 st using Russian method (see Notes)
- no st
- patt rep
- marker position

First Corner

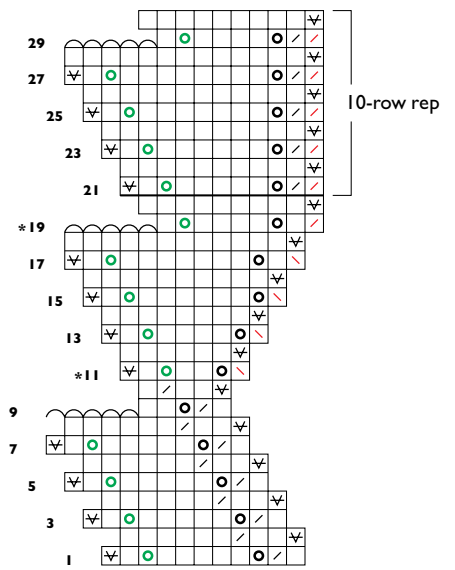


Right Corner and Top Edging



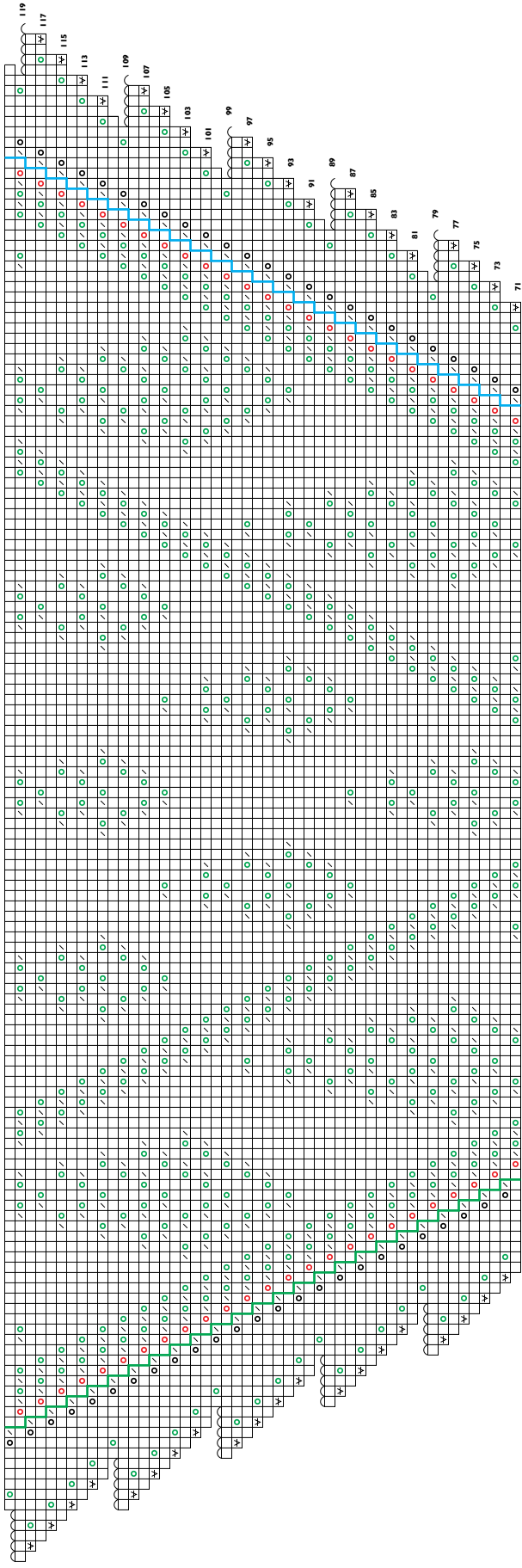
\*Work as given in directions

Left Corner and Top Edging



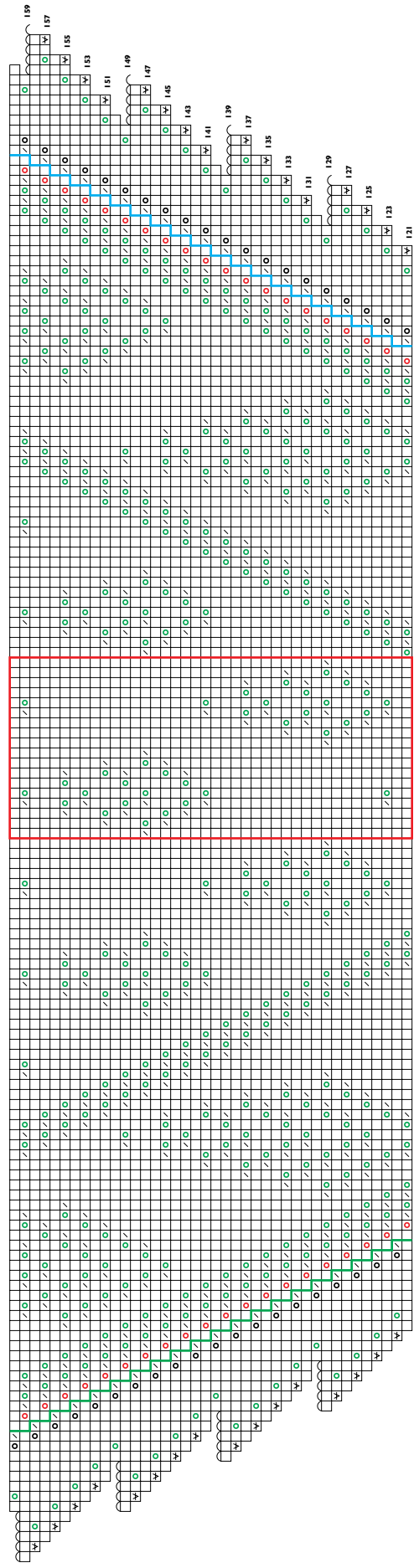
\*Work as given in directions

Body II



↑  
center st  
91 sts inc'd to 141 sts

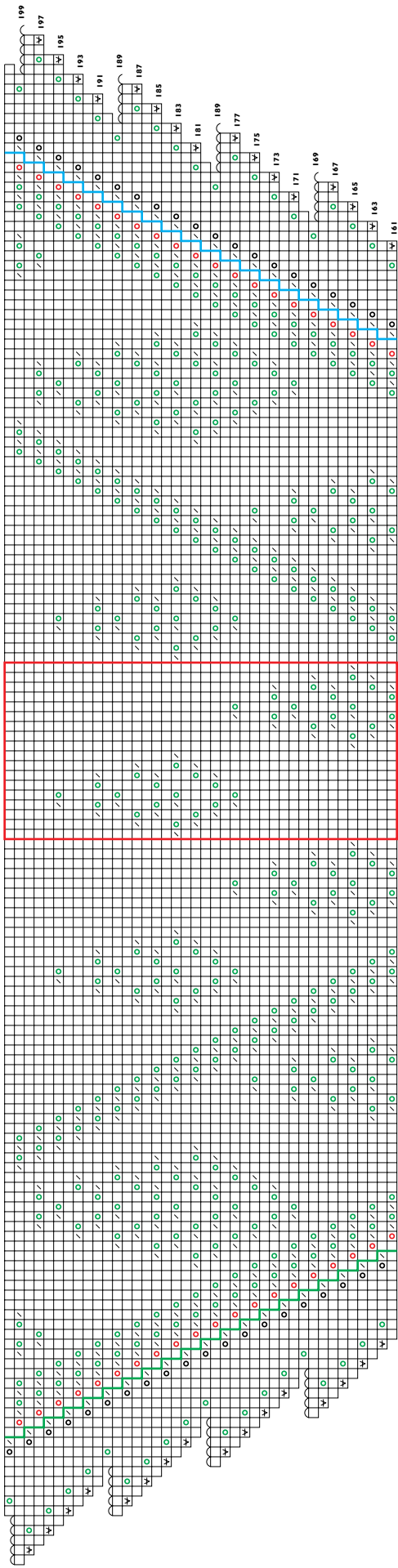
Body III



↑  
center st  
91 sts inc'd to 141 sts

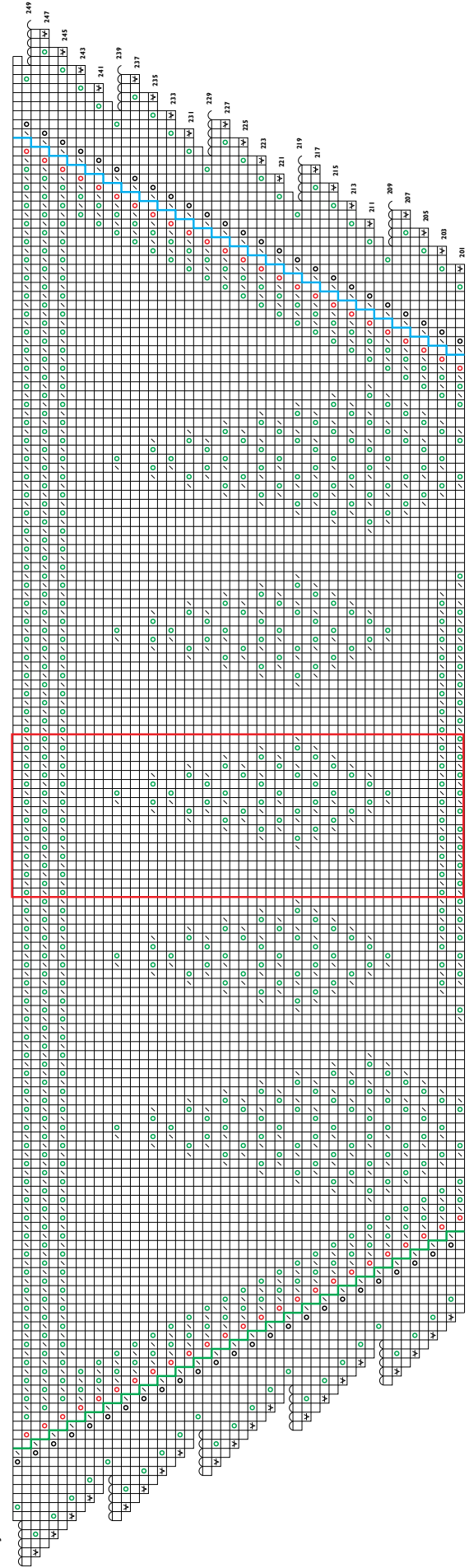
18-st rep  
work 3 times

Body IV



18-st rep  
work 5 times

Body V—Revised



18-st rep  
work 7 times