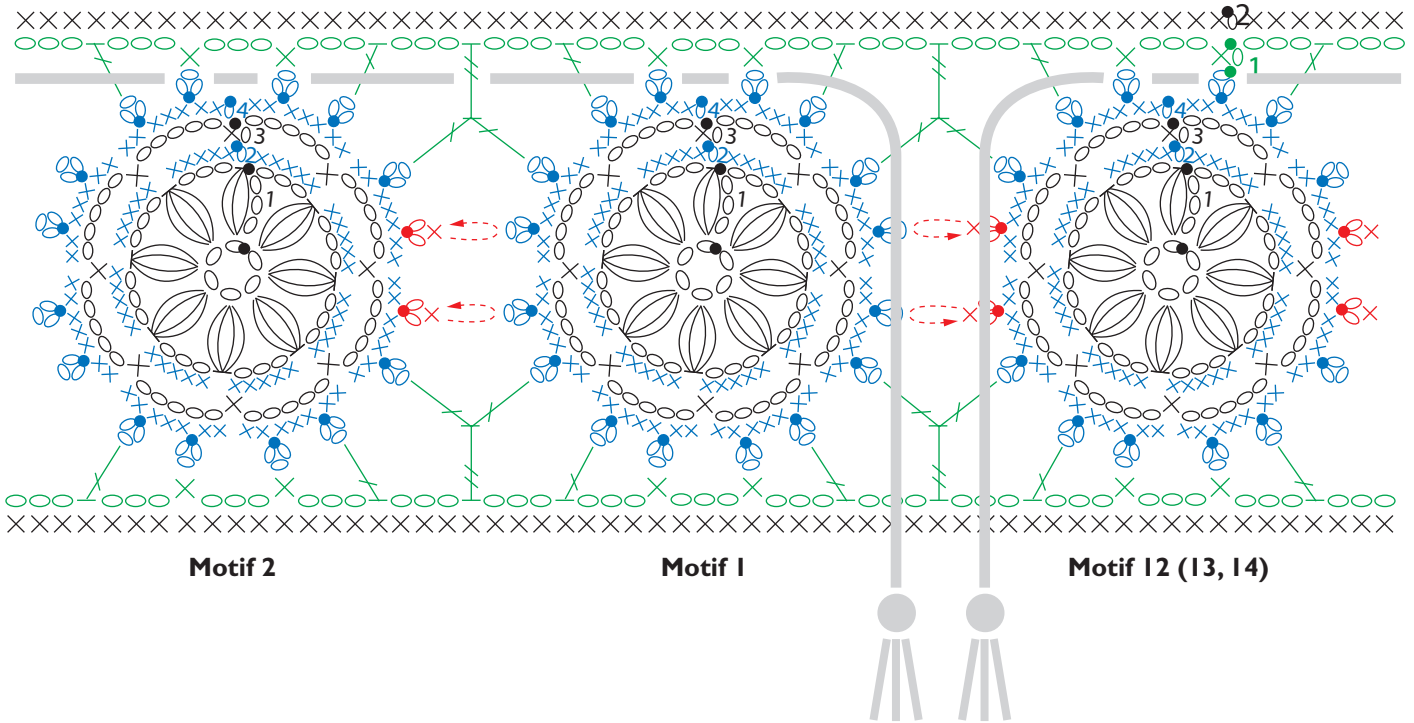


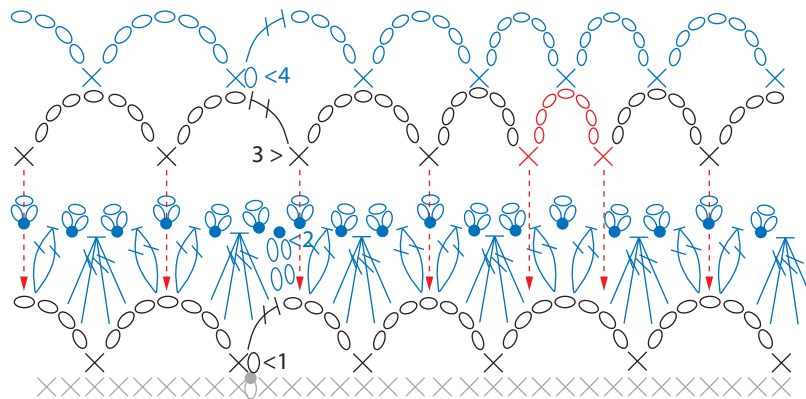
Eighteenth-Century Polonaise-Inspired Skirt

NATALIA KONONOVA

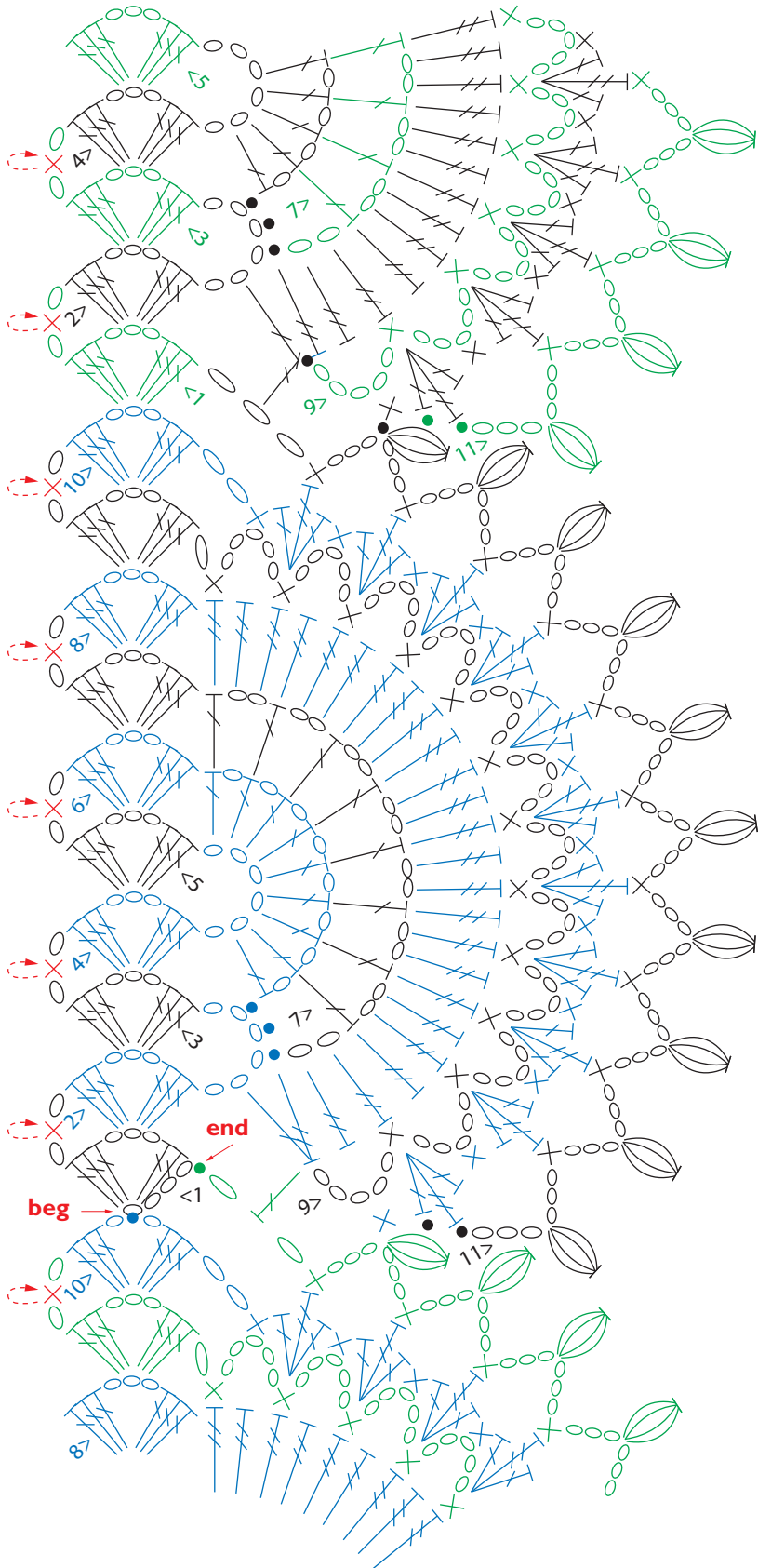
Waistband



Ruffles



Hem Scallop Edging



Scallop 2

Scallop 1

Scallop 17 (18, 19)

Stitch Key

- = slip stitch (sl st)
- = chain (ch)
- × = single crochet (sc)
- ┆ = double crochet (dc)
- ┆ = treble (tr)
- ┆ = dc2tog
- ┆ = dc4tog
- ⊖ = puff st
- ⊖ = picot
- ⊖ = increase
- ⊖ = place sc in indicated sp
- ⊖ = con picot
- ⊖ = connecting sc