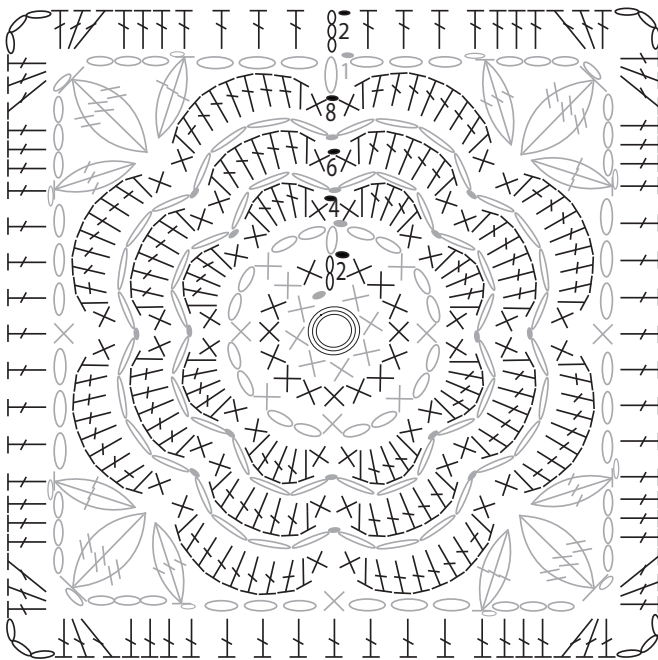











# Irish Rose Pillow

NANCY NEHRING

Rose



Stitch Key

-  = padding cord
-  = slip stitch (sl st)
-  = chain (ch)
-  = single crochet (sc)
-  = half double crochet (hdc)
-  = double crochet (dc)
-  = treble crochet (tr)
-  = dc3tog w/locking stitch
-  = trc3tog w/locking stitch