

# Marble Bay Cowl

LENA SKVAGERSON



Photos by Gayle Zucker

Farm  
& Fiber Knits

# Marble Bay Cowl

LENA SKVAGERSON

Associated with fishermen of the British Isles, gansey sweaters were traditionally worn by these seafaring souls who braved the unforgiving waters of the North Atlantic. In our modern context, gansey patterns endure, embodying a sense of timeless sophistication and a connection to a rich history of craftsmanship. The slit in the lower edge of this gansey-inspired cowl allows it to drape gracefully and comfortably around your neck and shoulders and echoes the split hem in some traditional gansey sweaters.

## MATERIALS

**Yarn** Yarn Citizen *Harmony Worsted* (50% alpaca, 50% wool; 211 yd/100 g skein; worsted weight): Sand, 2 skeins.

**Needles** Size 8 (5.0 mm) 16" (40 cm) circular needle (cir). Adjust needle size if necessary to obtain the correct gauge.

**Notions** Stitch marker (m).

**Gauge** 17 sts and 24 rnds/rows = 4" (10.2 cm) in St st, blocked; 17 sts and 28 rnds/rows = 4" (10.2 cm) average gauge in textured patterns, blocked.

**Finished size** 22" (55.9 cm) circumference at top and 14½" (36.8 cm) tall.

See [farmfiberknits.com/abbreviations](http://farmfiberknits.com/abbreviations) for terms you don't know.

## NOTES

- The cowl is worked from the top down, first in the round, then back and forth in rows to create the side split.

## INSTRUCTIONS

### Cowl

CO 96 sts, place marker for beg of rnd, and join for working in rnds, being careful not to twist sts.

**Rnds 1 and 2** Knit.

**Rnds 3–11** \*K2, p2; rep from \* to end of rnd.

**Rnd 12** Knit.

**Rnds 13 and 14** Purl.

**Rnd 15** Knit.

**Rnds 16 and 17** \*P2, k2; rep from \* to end of rnd.

**Rnds 18 and 19** \*K2, p2; rep from \* to end of rnd.

**Rnds 20–25** Rep Rnds 16–19, then work Rnds 16 and 17 once more.

**Rnd 26** Knit.

**Rnds 27 and 28** Purl.

**Rnd 29** \*K12, M1L; rep from \* to end of rnd—104 sts.

**Rnd 30** \*K1, p1; rep from \* to end of rnd.

**Rnd 31** Knit.

**Rnds 32–41** Rep Rnds 30 and 31 five times.

**Rnds 42 and 43** Purl.

**Rnd 44** \*K6, M1L, k7, M1L; rep from \* to end of rnd—120 sts.

**Rnds 45–55** Work 11 rnds in pattern from X Motif chart.

**Rnd 56** Knit.

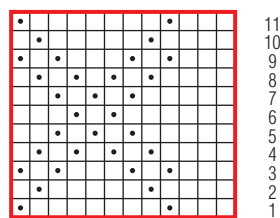


Eyelets and fisherman's rib underline the cowl's classic knit/purl motifs.

### Key

- knit
- purl
- repeat

### X Motif



12-st rep

**Rnds 57 and 58** Purl.

**Rnd 59** Knit—piece measures about 8½" from CO.

### Bottom Split Section

Remove beg-of-rnd m and begin working in rows.

**Row 1 (RS)** Using the cable method, CO 6 sts at beg of row, then \*k1, p1; rep from \* to last 6 sts, k6—126 sts.

**Row 2 (WS)** K6, \*p1, k1; rep from \* to last 6 sts, k6.

**Row 3** K6, \*k1, p1; rep from \* to last 6 sts, k6.

**Rows 4–12** Rep Rows 2 and 3 four times, then work Row 2 once more.



**Rows 13 and 14** Knit.

**Row 15** K6, purl to last 6 sts, k6.

**Row 16** K6, \*yo, k2tog; rep from \* to last 6 sts, k6.

**Row 17** K6, purl to last 6 sts, k6.

**Row 18** Knit.

### Fisherman's Rib Pattern

**Row 1** (RS) K9, \*M1L, k18; rep from \* to last 9 sts, M1L, k9—133 sts.

**Row 2** (WS) K6, \*p1, k1; rep from \* to last 7 sts, p1, k6.

**Row 3** K6, \*yo, sl 1 pwise wyb, p1; rep from \* to last 7 sts, yo, sl 1 pwise wyb, k6.

**Row 4** K6, \*work sl st and adjacent yo together as p2tog, yo, sl 1 pwise wyb; rep from \* to last 7 sts, work sl st and adjacent yo together as p2tog, k6.

**Row 5** K6, \*yo, sl 1 pwise wyb, work sl st and adjacent yo together as p2tog; rep from \* to last 7 sts, yo, sl 1 pwise wyb, k6.

Rep Rows 4 and 5 until Fisherman's Rib measures 3½" (8.9 cm), ending with a WS row—piece measures about 14½" (36.8 cm) from CO.

BO very loosely with RS facing, working each sl st and adjacent yo pair together as k2tog as you BO.

With RS facing, overlap garter edgings of the side split with the cable cast on edging underneath. Sew cable cast on at top of split to WS of cowl as invisibly as possible.

### FINISHING

Weave in ends. Block to measurements, evening out the stitch patterns.

**Lena Skvagerson**, Creative Director at Jimmy Beans Wool, intertwines her Nordic roots with the vibrancy of American knitting culture. Lena's creations reflect her passion for merging traditional techniques with the dynamic trends of the modern knitting world.

