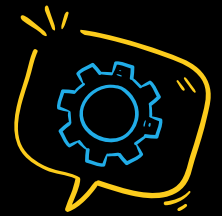


Customise



your connected devices with
ExperiencelQ on the My Lit Fibre App!

Enjoy more family time, a better online and offline balance and increased peace of mind when your family is online.



Filter:

Block entire internet categories or individual apps and websites. E.g. blocking 'social media' will block all related apps and websites. Perfect for creating focused homework time!



Usage:

Compare time online today, last week, or in the month, per category, app or website.



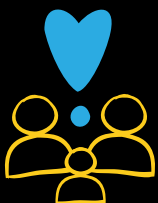
Time Limits:

Limit time for individual apps or websites. So you can keep the family's social media scrolling or YouTube watching under control.



Pause:

Pause the internet for any individual family member, device or the whole house with the tap of a button.



Schedules:

Set schedules for dinnertime, bedtime or schooltime. Schedules shut off internet access for every device assigned to a user profile.



Safe Search:

Defaults Google and YouTube searches to remove explicit or inappropriate content from search results. Keeping your family safer online.



Notifications:

Receive push notifications for events like time limits or when a new device connects to your network. Plus, get notified if a device tries to go onto a site which is blocked.



My Priorities:

Prioritise devices to ensure you're getting the best performance for what matters most. No need to worry when you're working from home on the summer holidays, you can prioritise your laptop!