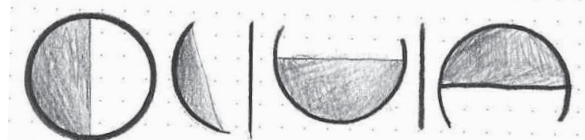
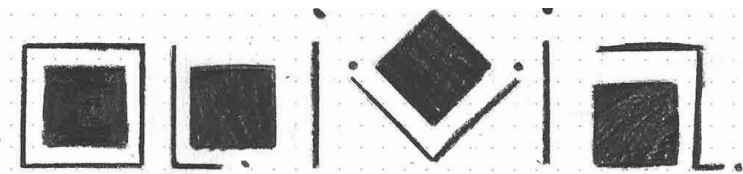


Olivia



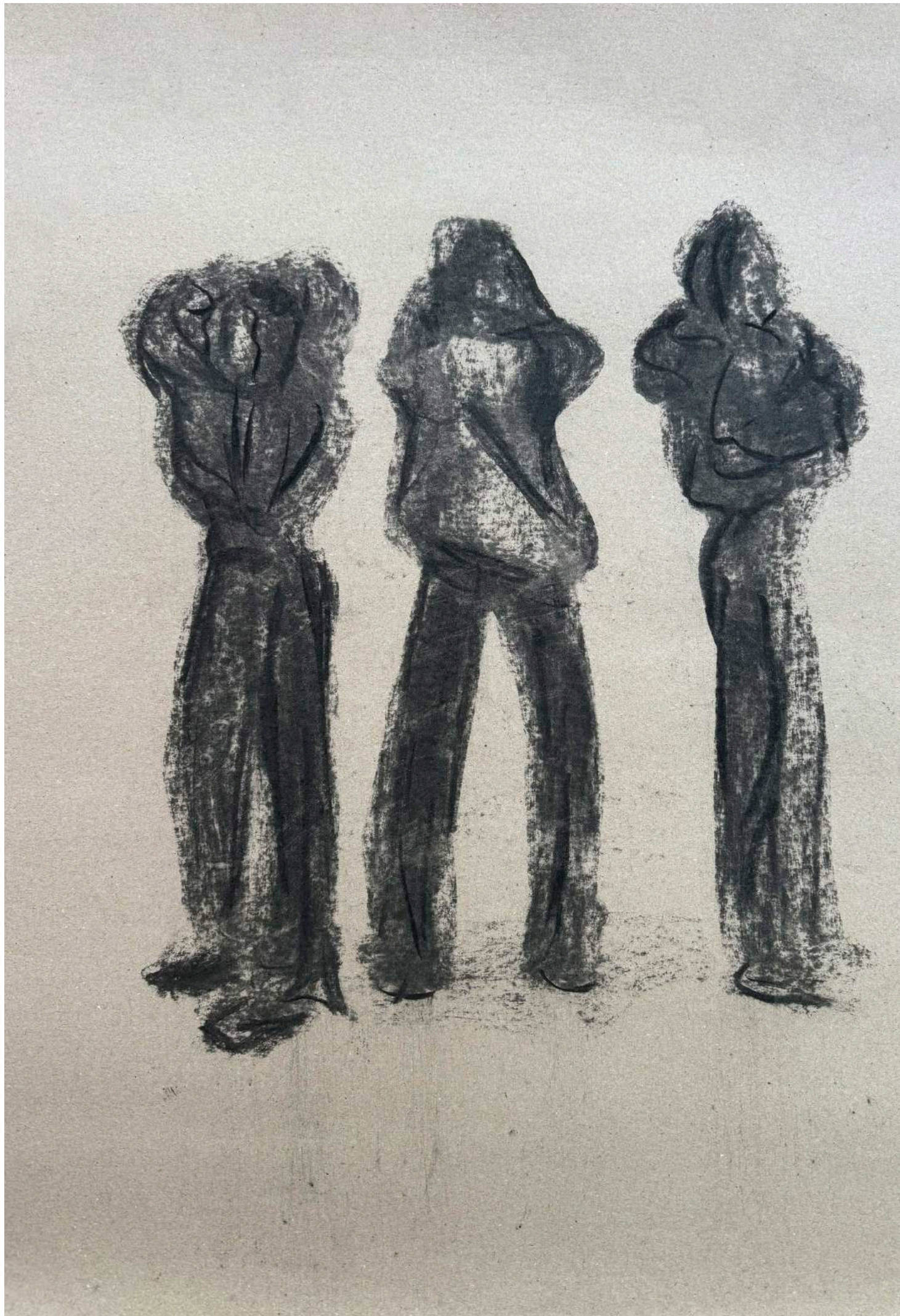
Olivia

**LIFE FASHION DRAWINGS**





drawn on A2, 1 minute poses



drawn on A2, 2 minute poses









drawn on A3, 7 minute pose

drawn on A4, 10 minute pose

, drawn on A3, 7 minute pose





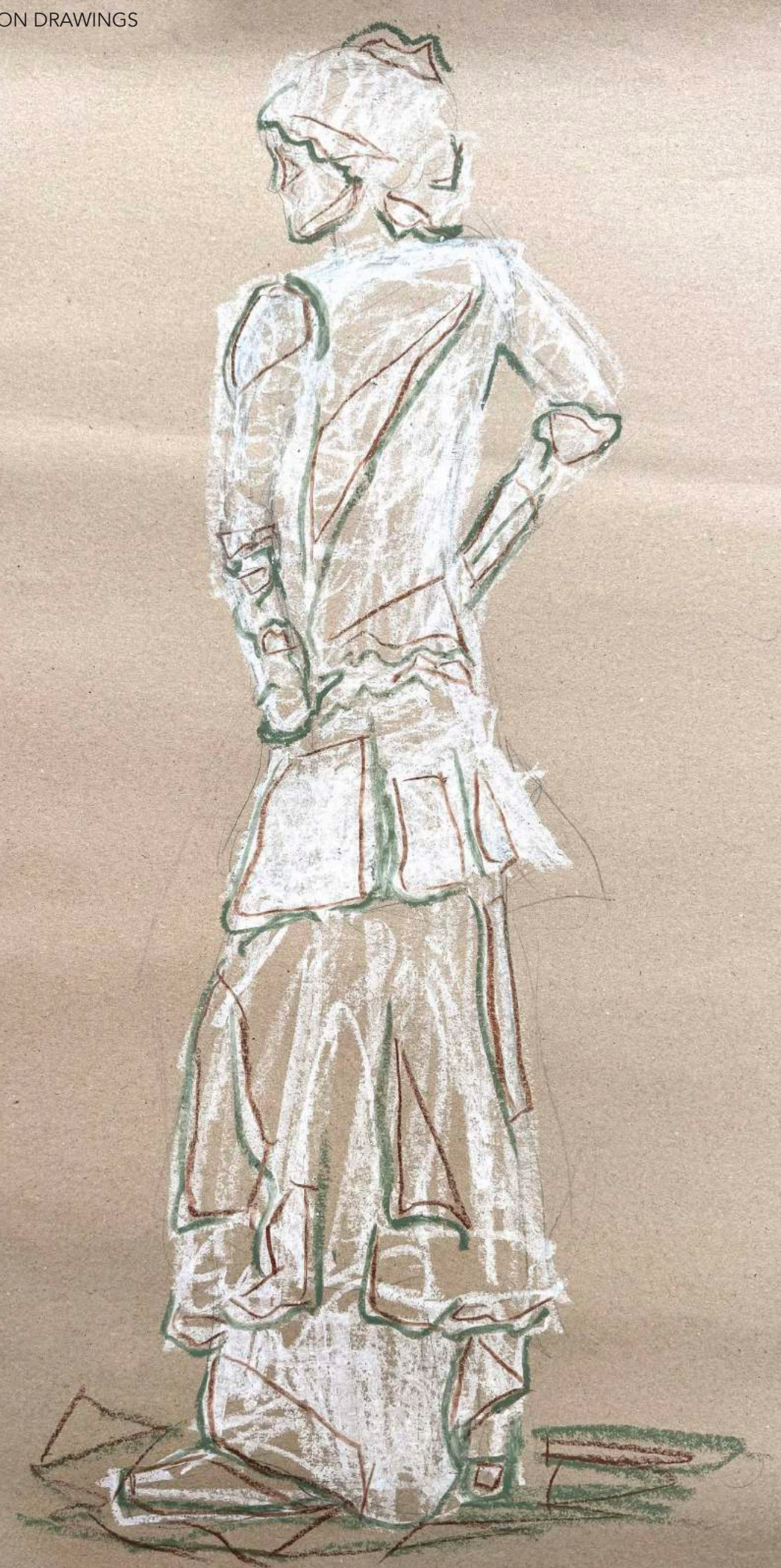
drawn on A2, 45 second poses

drawn on A2, 30 second poses



drawn on A3, 7 minute pose









drawn on A2, 10 minute pose



drawn on A4, 10 minute pose



**OUT OF THE SHIRT**



# Night demons from the romanticism era

- cold
- individual alone
- sky
- silver and blue
- shadows and hidden in the night

veil and twining of cloth

alone grey in blue sky

individual in a wide world

love for golden middle ages during romanticism

Land of dreams

shadows death and night

cold

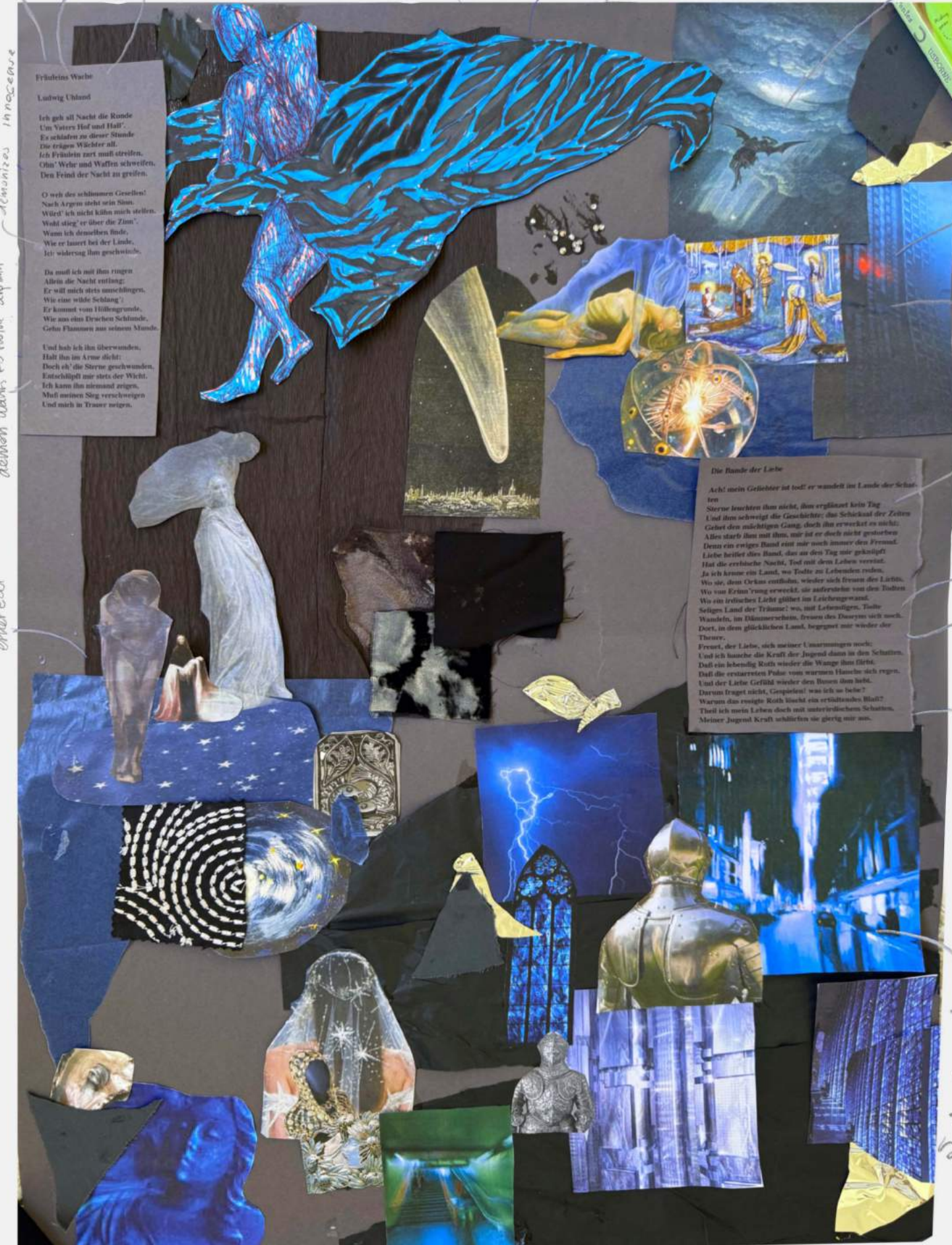
mix of modern and romanticism era

alone in nature  
disappears into the stars  
alone in nature

demons in innocence

demons want to twist around

ethereal





DRESS BY  
JEAN PAUL  
GAULTIER  
FALL 2009

OPTION 1  
ARMOUR

JEAN D'ARC

WOMAN  
KNIGHT

DURING THE ROMANTICISM  
ERA THE MIDDLE AGES WERE  
HIGHLY ROMANTICIZED AND  
IDEALIZED. HENCE KNIGHT CORE

BASE

DARK  
ROMANTICISM  
TREND  
HEDI  
SLIMANE  
VSL  
SS 13

ENSEMBLES FROM  
THE ROMANTICISM  
ERA

OPTION 2  
JACKET

MENS SUIT, 1740, ENGLAND

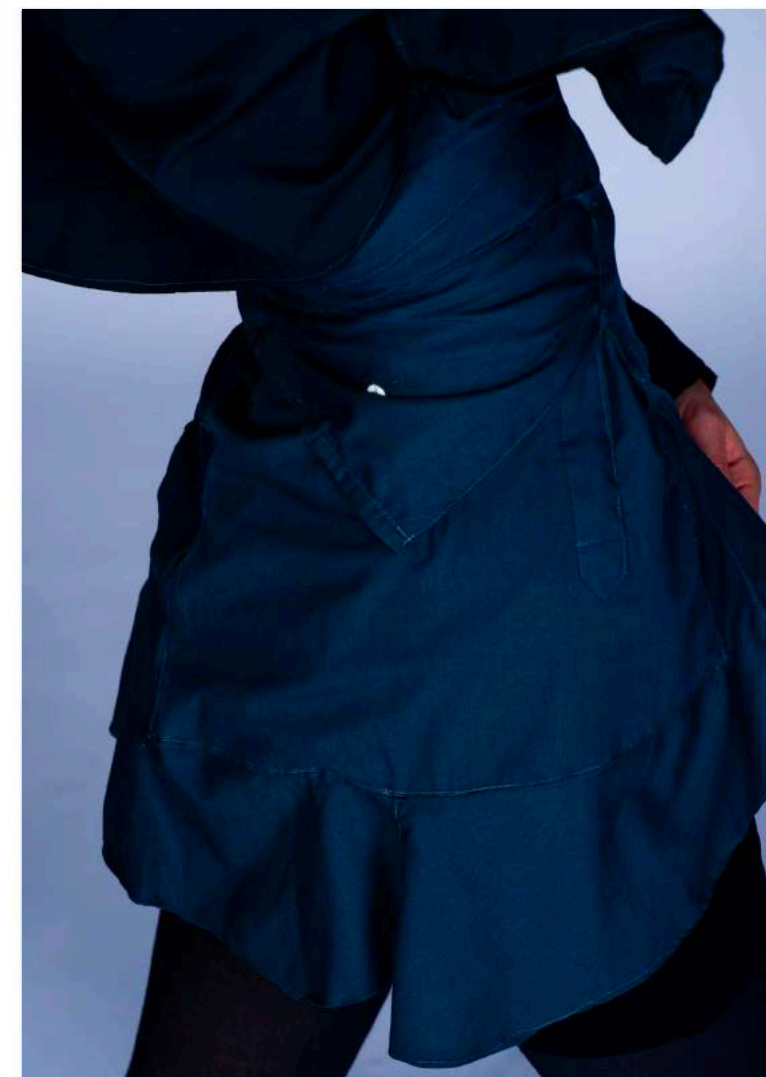


OUT OF THE SHIRT





OUT OF THE SHIRT





Photostudio at home and Loyda as model



Try No 1.



T jewelry

make up inspo

My Cinema / Ad Lighting Idea

didn't fit her well enough because I fitted the clothing to my body

2nd Try



Lighting = like 4 Bags



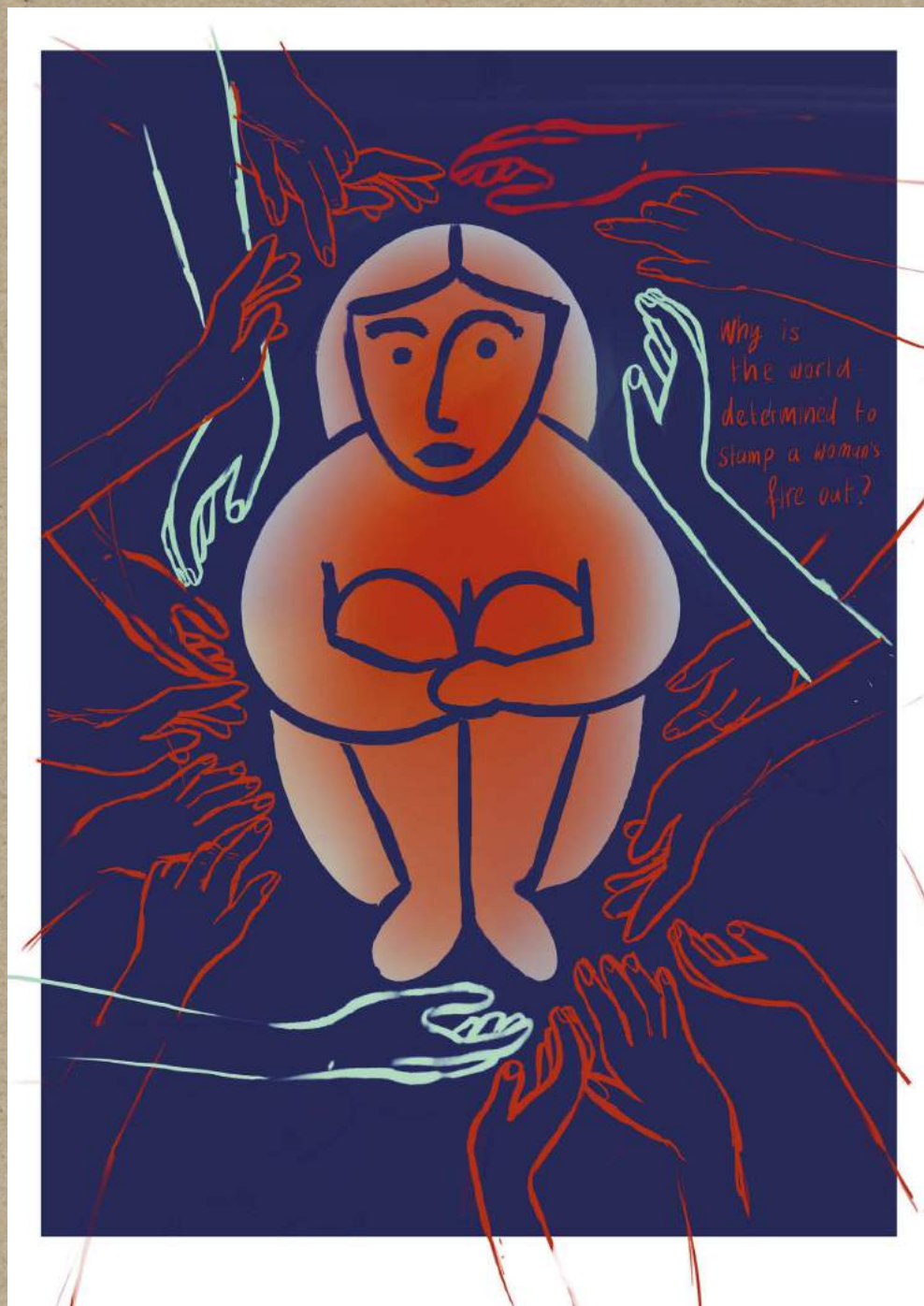






## FEMINIST PROTEST POSTCARDS

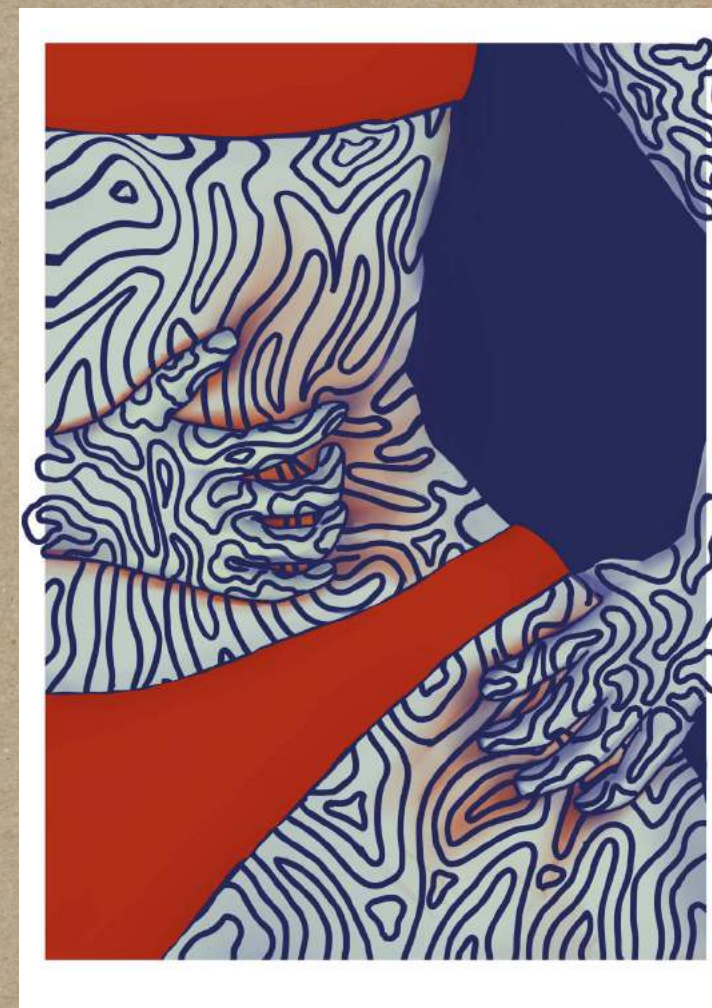




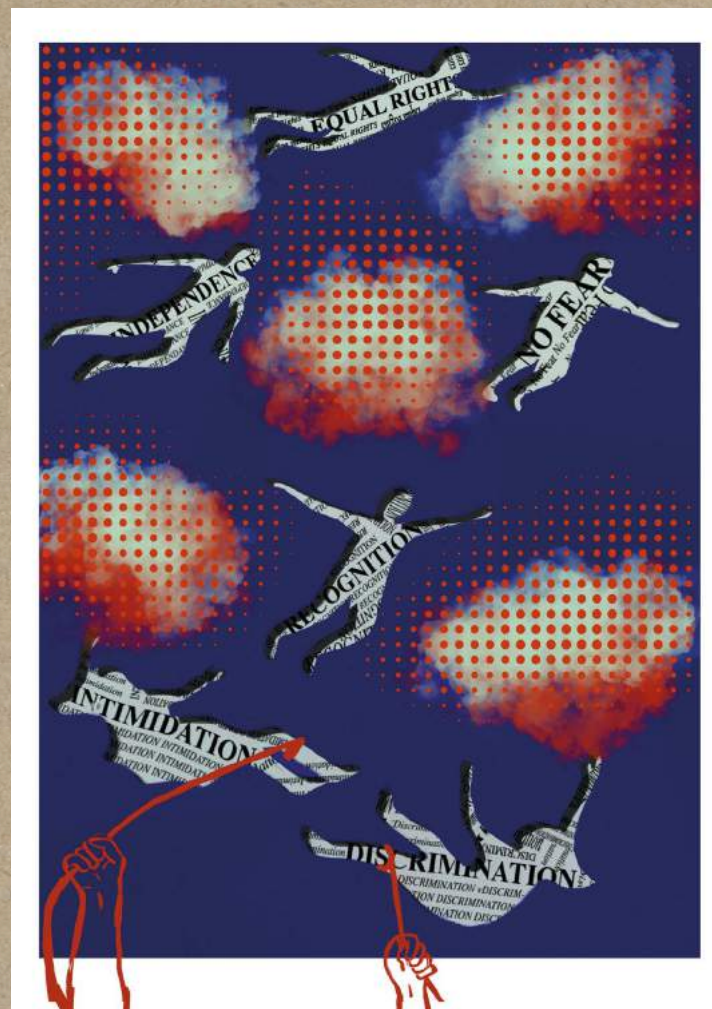
The sculpting of a woman



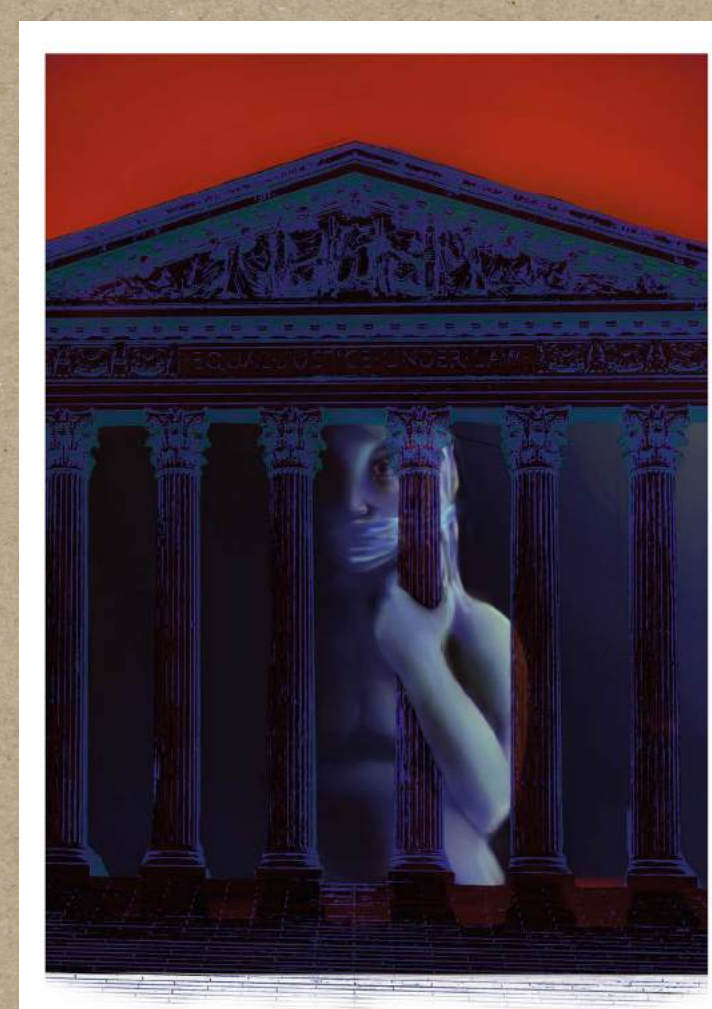
Women are not burdens to be exchanged.



Your body isn't wrong. Society is.



Equal fundamental freedom is a human right.



Men shouldn't be making laws about women's bodies.

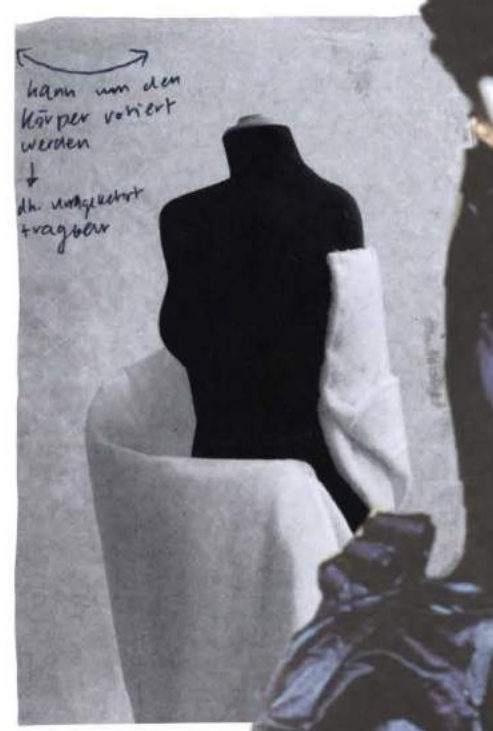
This is my Matriculation assignment for which created a series of five feminist protest postcards and wrote a forty-page English thesis on the topic. This experience taught me the value and intrigue of diverse research forms. It helped me understand their impact not only on subject knowledge but also on my work process and artistic decision-making. I learned the importance of personal inquiries about the subject and the correct documentation of my creations, including the mishaps. This is crucial for self-reflection and learning. Consequently, I received the highest grade for my thesis paper, art project, and the oral presentation. My greatest achievement was confidently and successfully expressing and addressing a political, cultural, and social issue through art.



## MANIPULATING THE SILHOUETTE



Margin  
ELEGANT  
HUGS THE BODY  
50's HOLLYWOOD GLAMOUR INSPIRED  
ROUNDED  
DYNAMIC



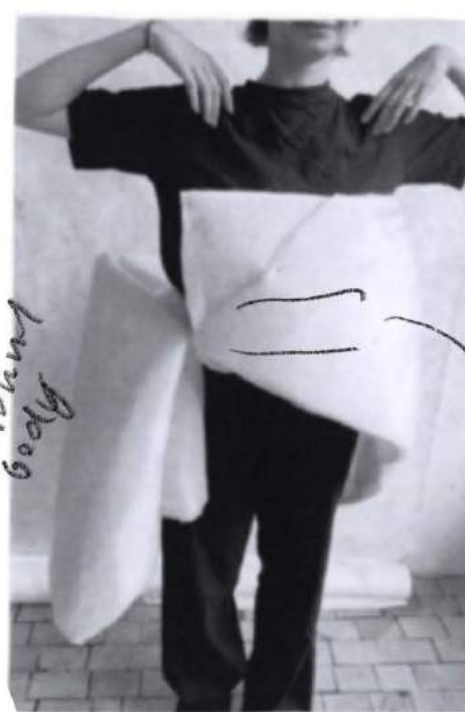
kann um den Körper gewickelt werden  
↓  
dh. umgekehrt tragbar







all sew  
to fits  
being  
tied  
around  
body



looks  
nice  
from  
front



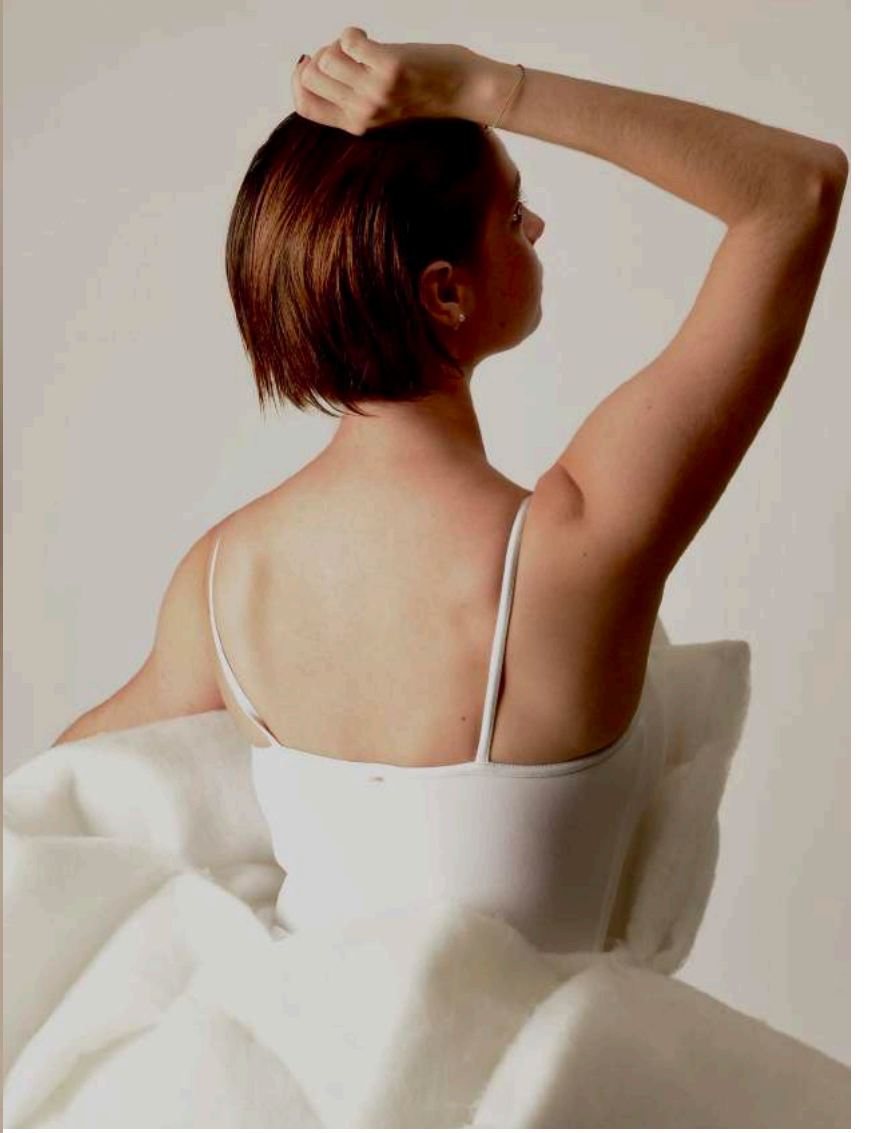
didn't like  
the it looks  
from side

didn't like the it looks  
from side

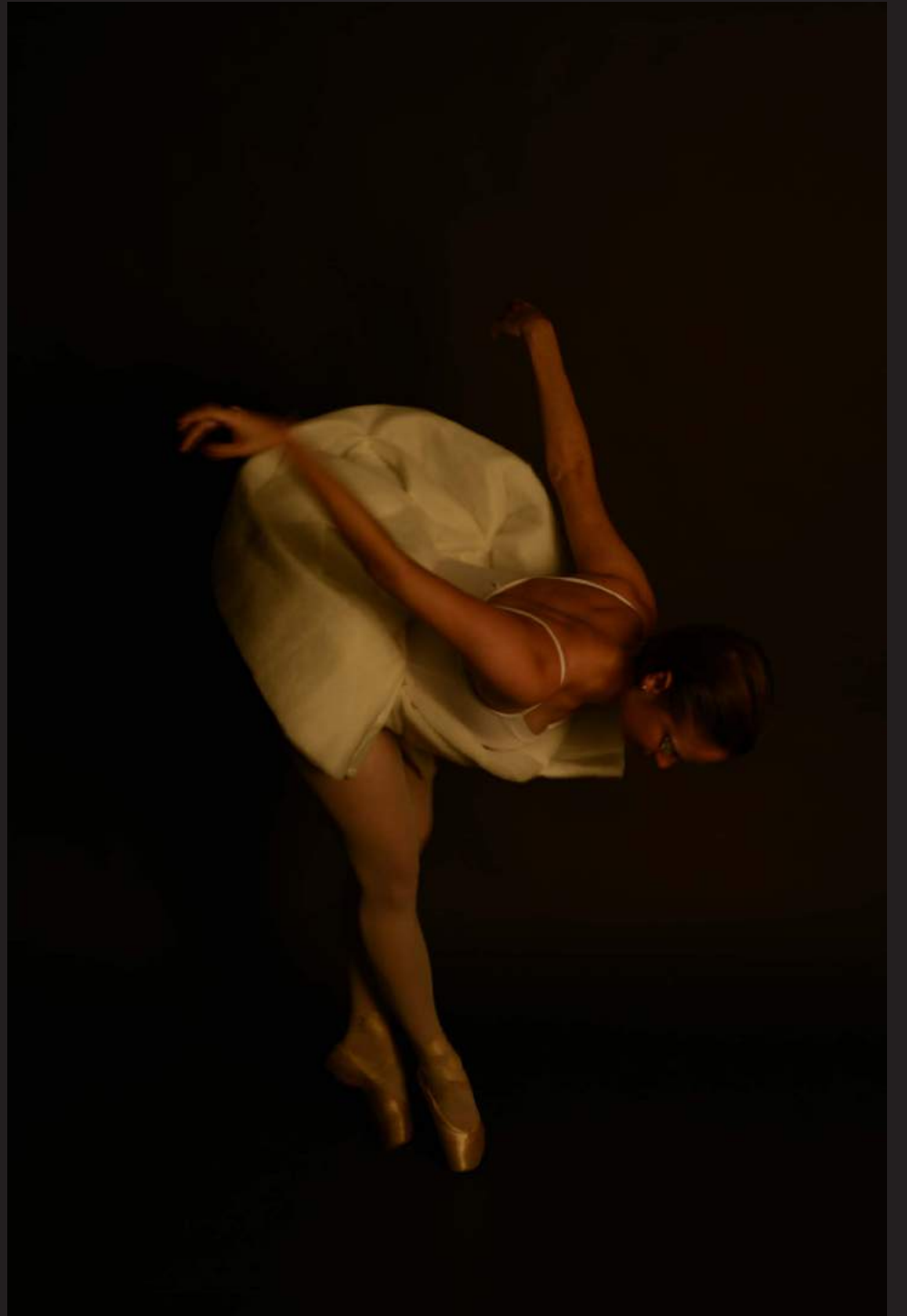
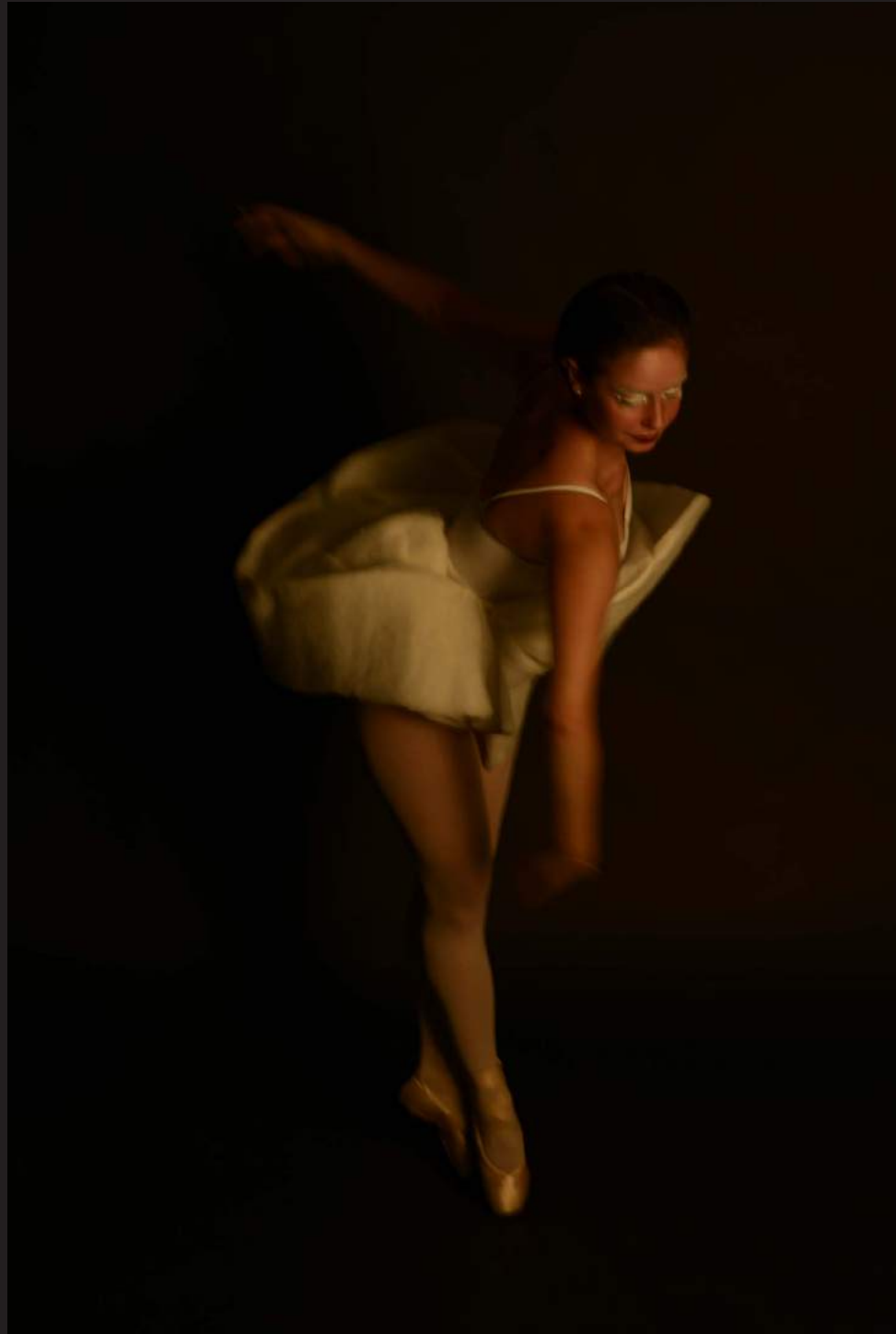


inside  
folded in  
to keep form











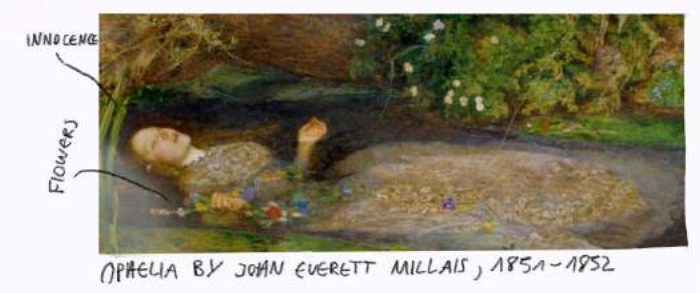
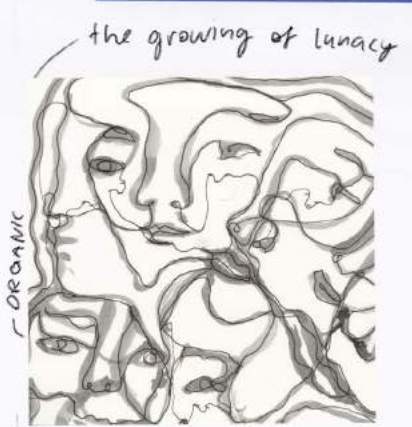
## OPHELIA IN NATURE



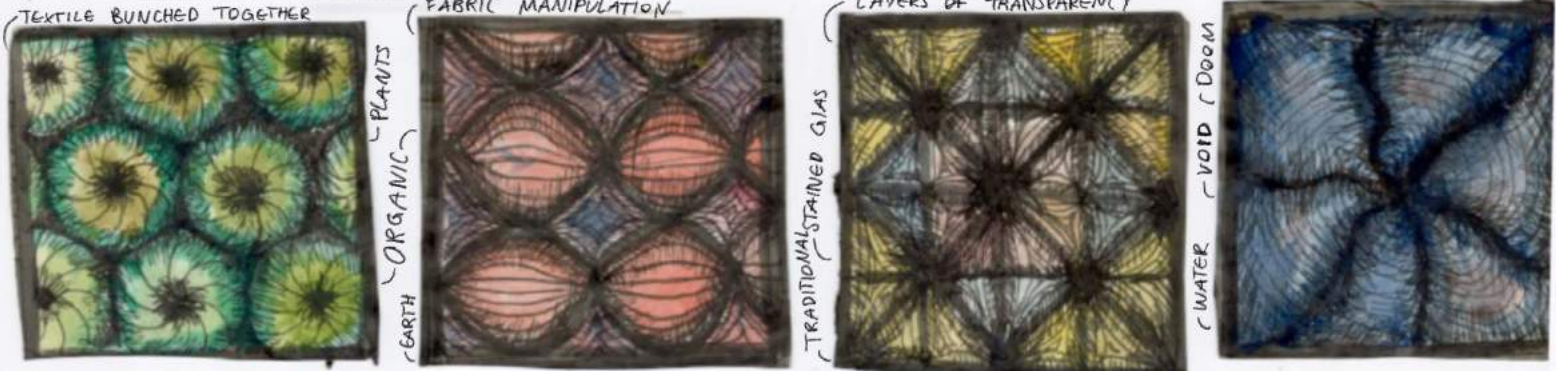


This project is inspired by Ophelia from the book "Hamlet" by Shakespeare. Through reading it and watching theatres and movies of the play, I realised that I interpreted Ophelia in a completely different way. It also came to my attention that the interpretations of Ophelia were mostly derived from the male perspective. For this reason, I decided to fight against that with my designs and interpretation of Ophelia in nature and create a portrayal of what I believe is her "true nature".

In this portfolio I will show snippets of the three design projects I made on the topic Ophelia in nature.



PATTERN PRINT AND TEXTILE DESIGNS INSPIRED BY OPHELIA IN NATURE



The initial sketch of my first design is based on Ophelia and the symbol of the flowers she carries. To me, flowers represent a celebration of girlhood. This is because I remember my granny sharing a part of her girlhood, hidden deep within her, by telling me stories and fairy tales about flowers, putting them in my hair, and making bracelets when I was a little girl. The sketch above I drew my granny in various stances with wilting flowers that I added to the illustration and then digitally edited. The message of this illustration is how the older we get, the more our girlhood wilts due to our societal surroundings.





The final design is inspired by the tales my granny used to tell me about fuchsia flowers being fairies.







This is the final collage of my fuchsia flower dress design. The dress blooms when you pull on the strings, celebrating girlhood by releasing vibrant colors under a puff of lace. This effect reminds me of a significant part of my girlhood when my favorite clothing item was a skirt that I would twirl around in, making it flow and billow around me.



This is an acrylic painting I made on a 60 x 45cm canvas. This is based on a story my grandparents told me about a weeping willow in their garden that transforms into a weeping woman when no one is watching.



INSPO GREEK  
SCULPTURE



This second design project protests the popular representation and interpretation of Ophelia solely being from the male perspective. She is often depicted as a weak woman who isn't capable of taking responsibility for herself and her mind. Therefore, I developed the idea to recreate a garment similar to those seen on classical Greek sculptures, highlighting how Ophelia is continuously sculpted by men.



TEMPLATE



①  
IDEA



②  
TRACING  
ON  
TRANSPARENT  
PAPER



③



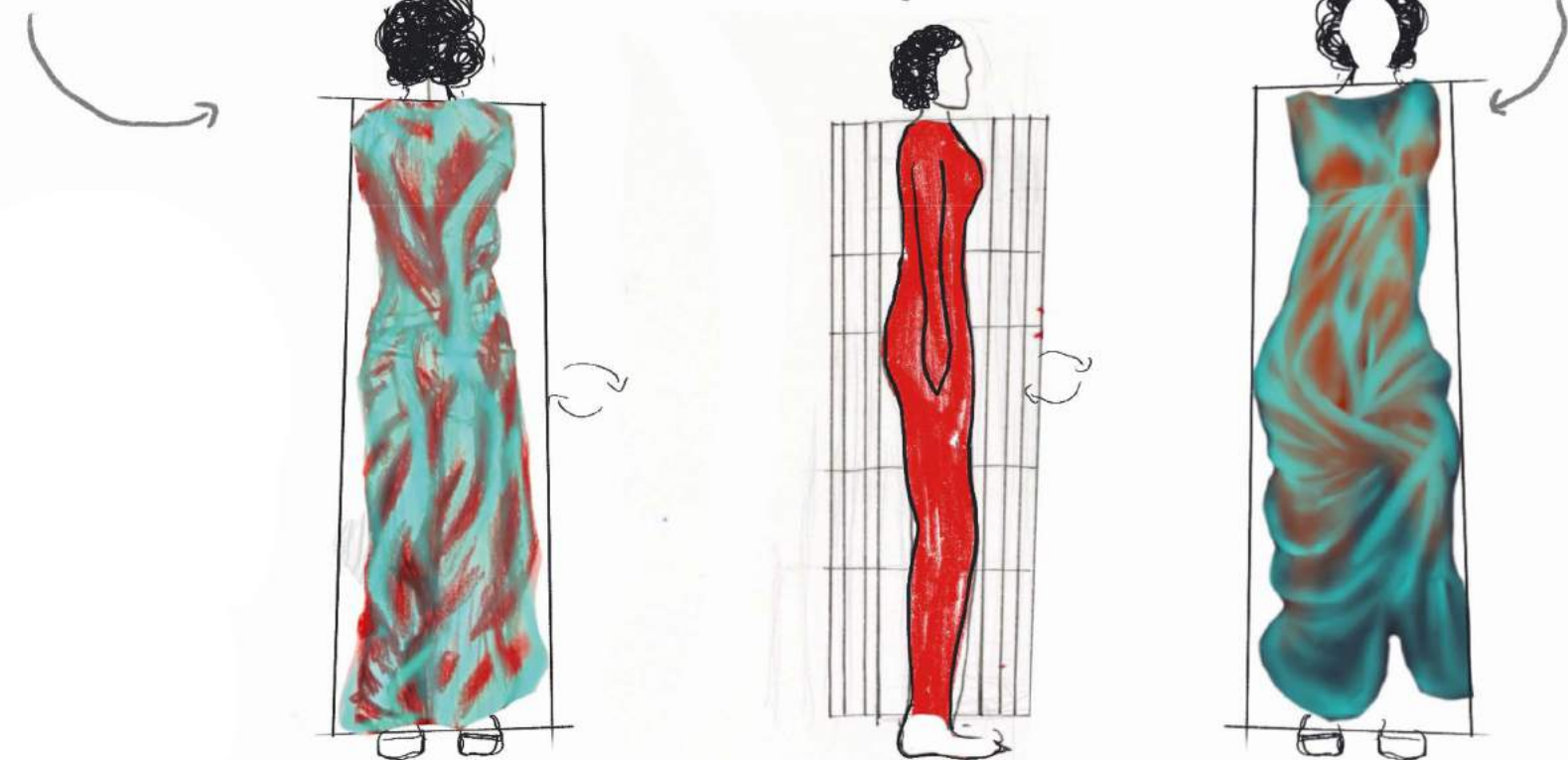
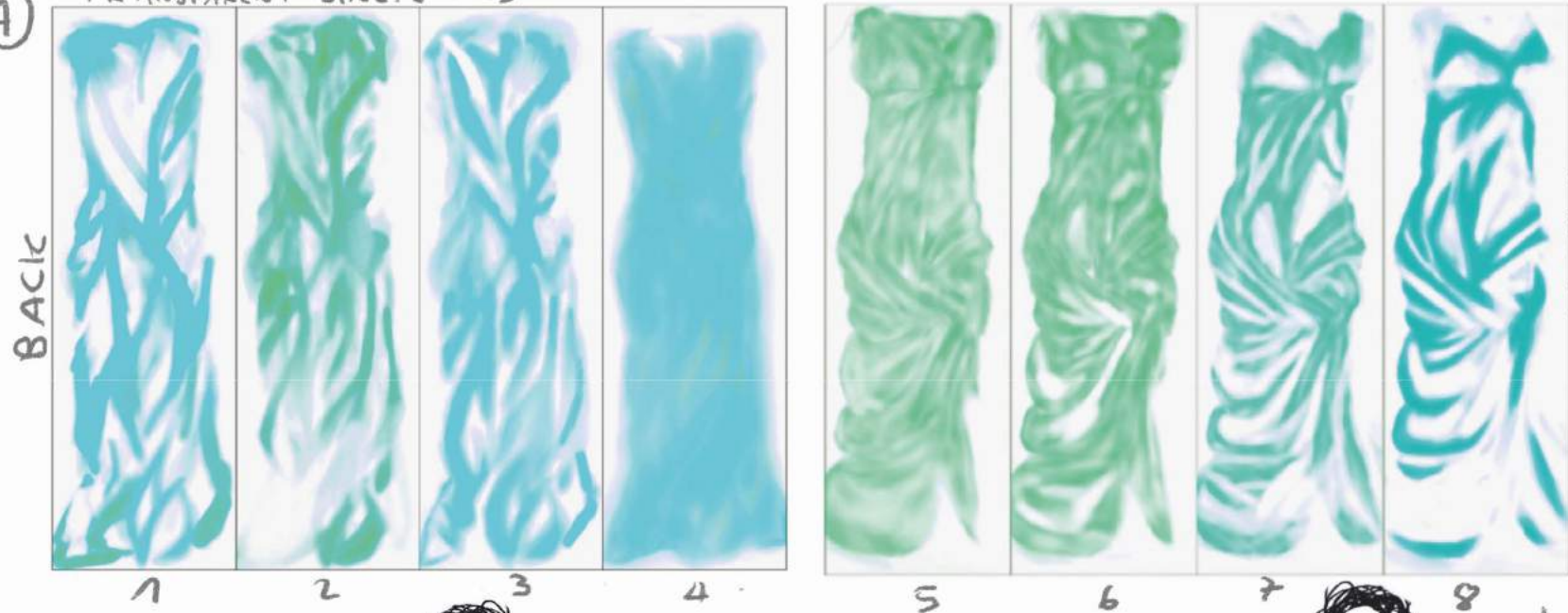
UP  
AGAINST  
WINDOW

Later, I decided to make my idea even more original. I aimed to do this by creating transparent layers to build the shape of Ophelia's sculpture. Beneath, she is wearing red to depict her inner fire hidden beneath the surface. The final design consists of glass or plastic sheets aligned in rows on both sides of the body, with individual shades of the dress printed on each one. When viewed from the front, the aligned layers create the illusion of a dress. From the side, it appears as a row of glass panes, forming a box which ultimately encases the woman and her fire - just like how the dominant male gaze encages Ophelia.

④

INDIVIDUAL  
TRANSPARENT SHEETS

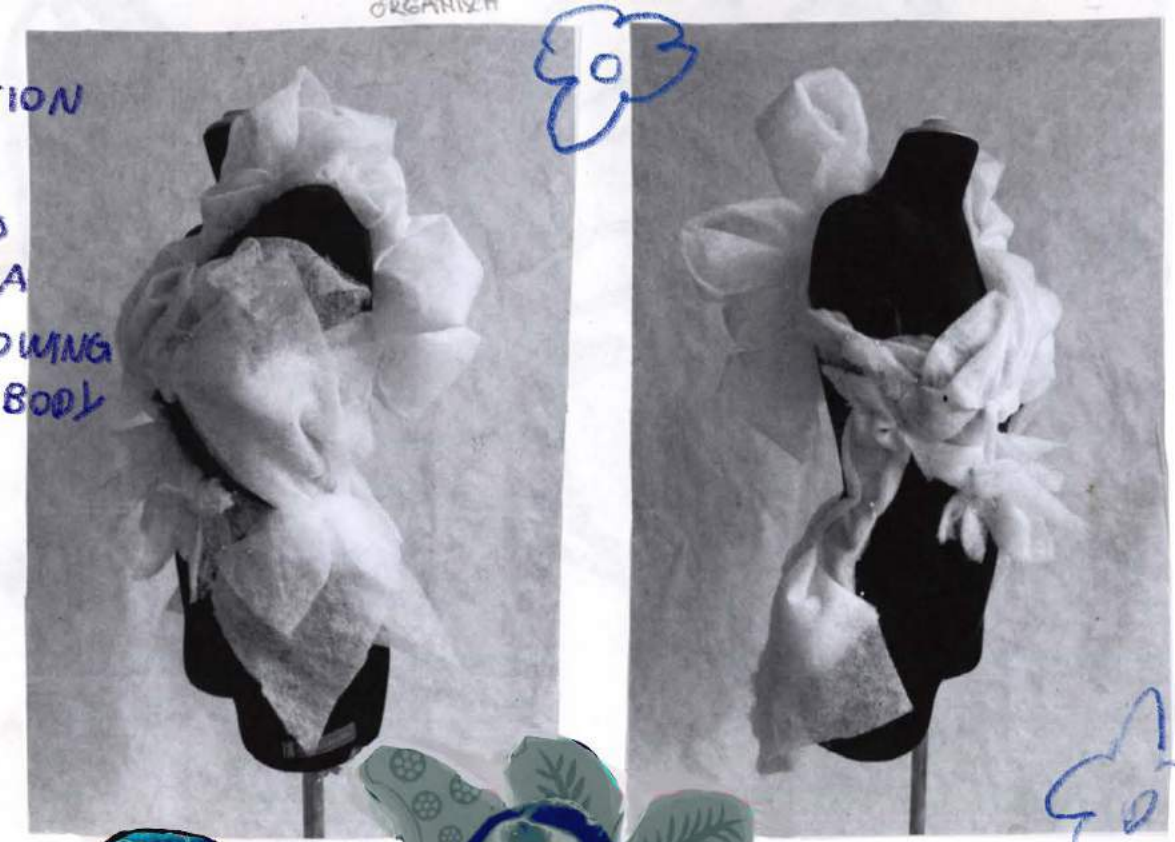
MY DIGITAL ILLUSTRATIONS







→ CONTINUATION  
OF TEXTURE  
AND LAYERS  
BECOMING A  
PLANT GROWING  
UP THE BODY



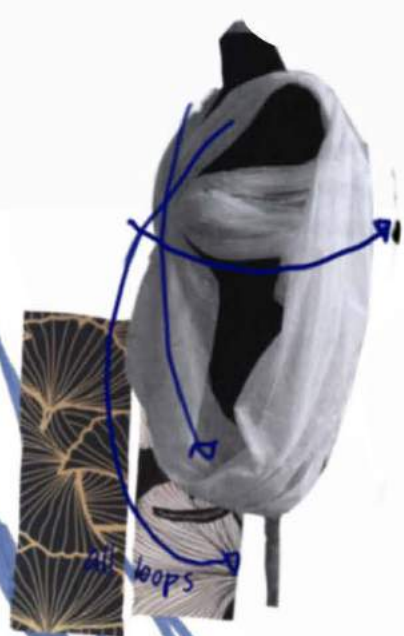
THE BACK  
REVEALS A  
FLOWER

For the third design project the first sketch is draws inspiration from the madness that engulfs Ophelia just like the water causing her death. As the design progressed, it evolved to incorporate plants and a flower, symbolizing insanity gradually overgrowing and overwhelming her.

COOL PRINT  
FOR TROUSERS







ELEGANT PLEATED



ALL JUST ONE PIECE OF FABRIC

FLOWER

This but with many loops attached

thicker material



WIDE

sketch Material too thick Stoff zu dick

doesn't look clean field is unclear aus

more volume mehr Volumen

Effect vom Stoff mit den Bögen

The effect of the loop isn't as strong



material front

any one of these colours





**FROGSPAWN DRESS**





LOVE SEX MONEY

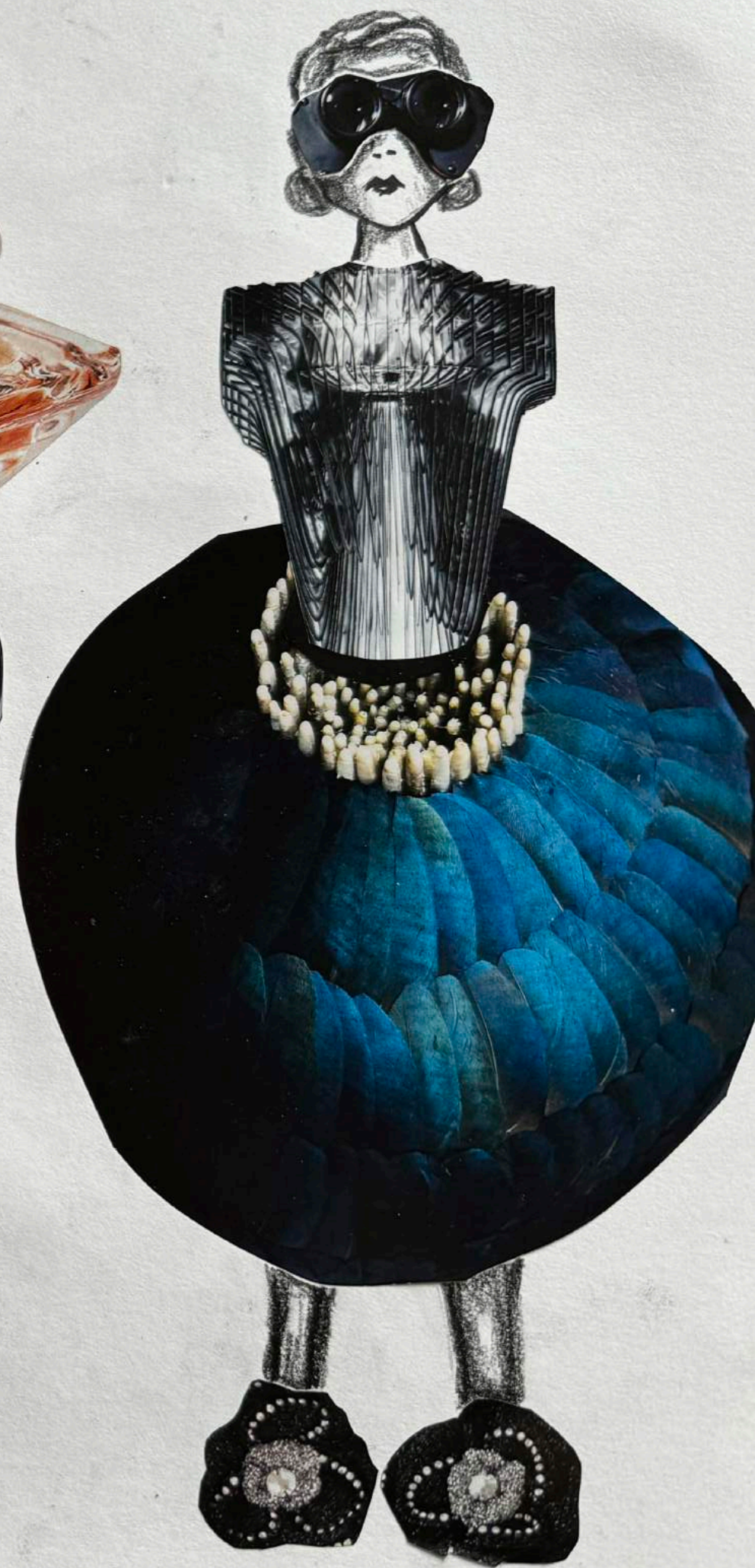


335

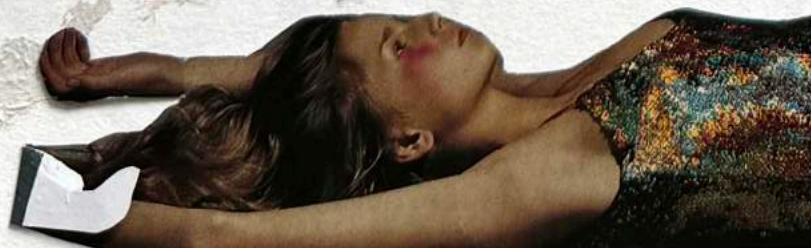
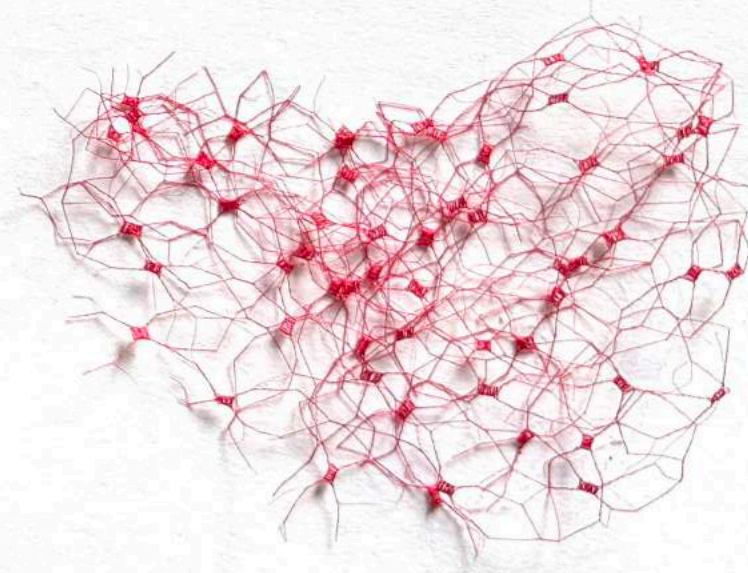














## CURRENT PROJECT

I am currently working on a project inspired by the beaches of my family's hometown in Scotland, which are known for oysters. For this, I began with material experimentation and would like to create a collection on this topic because I made many findings. The first project I will start in real life is the skirt on the right. I will make it using the patchwork technique and shape it with a thick layer of material underneath the patchwork.

Analogue fashion design drawing on A4



Analogue fashion design drawing on A4







