

Learning, Teaching and Assessment Strategy 2022-2026

1. Introduction

This strategy supports the achievement of the Academic Development Plan 2022-2026.

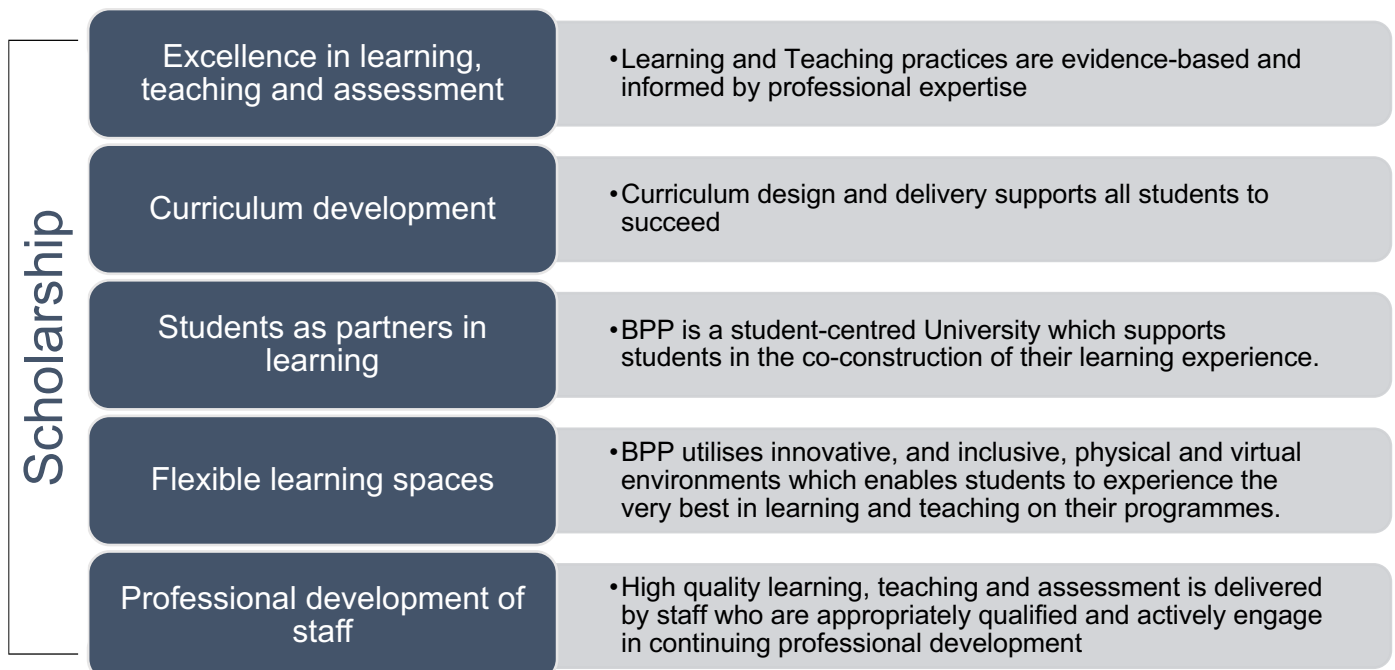
Learning, teaching and assessment is professionally focussed and ensures graduates are equipped to deal with current and future business needs.

BPP's excellent teaching is underpinned by a focus on scholarship which applies current knowledge within the professions we serve.

Assessment mirrors the real world of the professions and will prepare graduates for work.

The five principles below are based on academic and graduate outcomes in relation to learning, teaching and assessment, underpinned by scholarship.

2. Principles



3. Strategy

3.1 Excellence in learning, teaching and assessment

Learning and Teaching practices are evidence-based and informed by professional expertise.

- Self-evaluation is at the core of learning, teaching and assessment and is used to drive evidence-based continuous improvement

- Teaching and assessment are designed and delivered by staff who have current industry/professional expertise

3.2 Curriculum development

Curriculum design and delivery supports all students to succeed.

- Programmes are designed to enable students to achieve successful academic outcomes.
- Learning, teaching and assessment are inclusive, and offers equal opportunities for all students to be successful

3.3 Students as partners in learning

BPP is a student-centred University which supports students in the co-construction of their learning experience.

- BPP values the input of students during the design, delivery, and evaluation of their learning experience, providing opportunities for all students to contribute individually, and collectively, to areas which impact their learning.

3.4 Flexible learning environments

BPP utilises innovative, and inclusive, physical and virtual environments which enables students to experience the very best in learning and teaching on their programmes.

- Learning and teaching environments at BPP enable students to engage in high quality learning, through purposeful curriculum design and the incorporation of digital technologies. Where possible, these reflect and emulate workplaces cognate with the programme being studied.

3.5 Professional development of staff

High quality learning, teaching and assessment is delivered by staff who are appropriately qualified and actively engage in continuing professional development.

- Staff engage in pedagogic development activities to support enhancement of Learning, Teaching and Assessment