

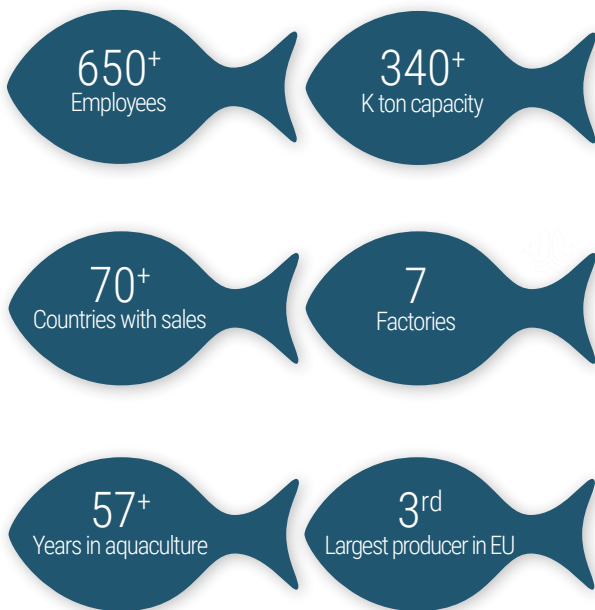


ALLER AQUA GROUP

LET'S GROW
TOGETHER

To produce and deliver feed of the highest quality for aquaculture, we have factories in 7 countries and sell feed in more than 70. As a company we are big enough to meet your needs, but smaller than the biggest producers, and this is exactly what makes us flexible, decisive and gives us the option of reacting quickly to the changing needs of our customers.

FACTS ABOUT ALLER AQUA GROUP



Today Aller Aqua has factories in Denmark, Poland, Germany, Egypt, China, Zambia and Serbia, and we export our products all over the world. We have a broad and professional product range, consisting of feed for over 30 species of fish.

We know the importance the right feed plays in your production, and therefore our professional development- and research center in Germany, Aller Aqua Research, consistently works on optimizing, developing and documenting the effect of our products. This ensures that you receive top-quality professional products, at competitive prices – delivered on time.

We work actively with the UN SDG's to reduce our environmental impact and provide food and improved living conditions for people everywhere.

| DENMARK | POLAND | GERMANY | EGYPT | CHINA | ZAMBIA | SERBIA |
|--|---------------------------|---|----------------------------------|---|--------------------|--|
| 1979/2006 | 1991 | 2006 | 2011 | 2014 | 2016 | 2018 |
| 55+ | 43+ | 100+ | 118+ | 38+ | 230+ | 30+ |
| 40,000 ton | 35,000 ton | 50,000 ton | 100,000 ton | 50,000 ton | 50,000 ton | 20,000 ton |
| Trout Salmon Sea bass Sea bream | Trout Carp Sturgeon | Trout, Tilapia Catfish Sea bass Sea bream | Tilapia Sea bass Sea bream | Trout Sturgeon Salmon Sole, Turbot Sea bass | Tilapia Catfish | Carp Trout Sea bass Sea bream |

Founded Annual production capacity Employees Primary species

HIGH QUALITY FEED FOR AQUACULTURE



An aerial photograph of a large industrial facility, likely a feed mill, with several large yellow and grey buildings, a central courtyard with a green lawn, and a parking lot. The facility is surrounded by agricultural fields and trees. A white outline of a fish is overlaid on the image, with its body following the path of the main building and its tail pointing towards the bottom right.

ALLER AQUA GROUP