



# **Personal Blender**

## **Instruction Manual**



**Item No. 34009/34029**

# SAFETY INSTRUCTIONS



**IMPORTANT:** Read these instructions carefully before using this appliance and keep them for future reference.

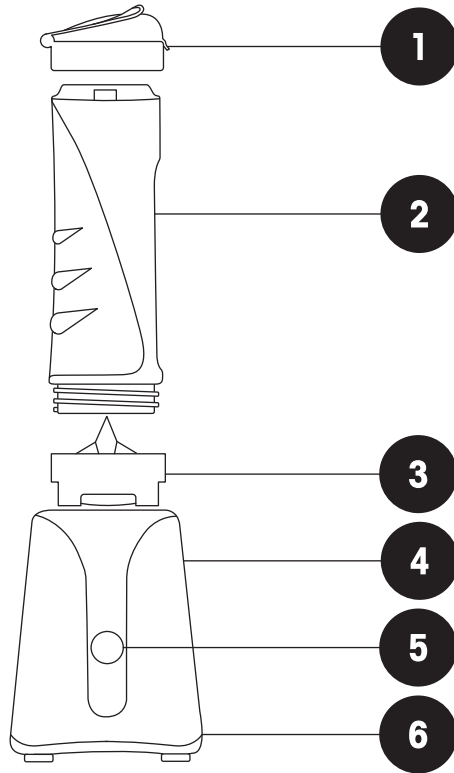


**Warning!** Read all safety warnings and instructions. Failure to follow these may result in electric shock, fire and/or injury.

- **The intended use of this appliance is explained in this instruction manual. The use of accessories other than those recommended may present a risk of personal injury.**
- **Always check the mains voltage corresponds to the voltage on the rating plate.**
- Care must be taken when handling the sharp cutting blades, emptying the bowl and during cleaning.
- Ensure the appliance is switched off before removing it from the stand.
- Switch off the appliance and disconnect from the power supply before changing accessories or touching moving parts.
- If the supply cord is damaged it must only be repaired or replaced by a suitably qualified person.
- Do NOT position appliance where it can be reached by children.
- Extra caution is necessary when used near children or when left unattended.
- The appliance can be used by children aged 8 years and above and persons with reduced physical, sensory or mental capabilities or lack of knowledge and experience if they have been given supervision or instruction concerning the use of the appliance in a safe way and understand the hazards involved.
- Children must not play with the appliance.
- Cleaning and user maintenance by children must not be carried out without supervision.
- Children of less than 3 years should be kept away unless continually supervised.

- Children aged from 3 years and less than 8 years shall only switch the appliance on/off provided it has been installed in its intended normal operational position and they have been given supervision or instruction concerning the use of the appliance in a safe way and understand the hazards involved.
- Children from 3 years and less than 8 years shall not plug in, regulate or clean the appliance or carry out user maintenance of the appliance.
- This appliance is for household use only and not commercial or industrial use.
- Use this appliance only as described in this manual. Any other use is not recommended by the manufacturer and may cause fire, electric shock or injury
- If the product or its supply cord is damaged do not use and consult a qualified person for repair or dispose of responsibly.
- Always unplug the appliance after use
- Store the appliance out of reach of children when not in use
- Store in a clean dry storage area when not in use
- Always ensure any vents or outlets are clear from blockages which may impact on the products function or safe use.
- Always unplug this product from the mains by pulling on the plug not the power cable.
- Always unplug before cleaning.
- Only use a soft cloth with mild soapy water to clean this product. Do not submerge this product in water or any other liquid
- Do not use the appliance for other than its intended use.

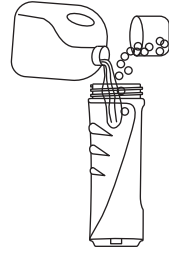
# COMPONENTS



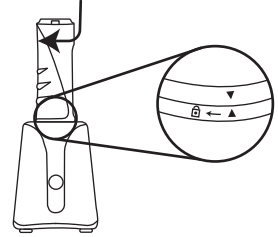
- |    |                          |    |              |
|----|--------------------------|----|--------------|
| 1. | Spill-proof drinking lid | 4. | Blender Base |
| 2. | Sport Bottle             | 5. | Power Button |
| 3. | Blade Assembly           | 6. | Power Cord   |

# USING THE APPLIANCE

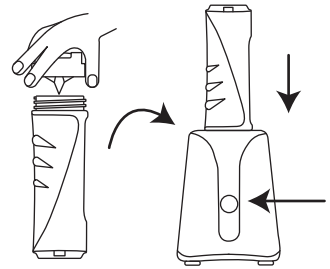
1. Place the Sport Bottle on a flat surface with the open end facing up. Fill the sport bottle with your chosen ingredients up to the 600ml mark.



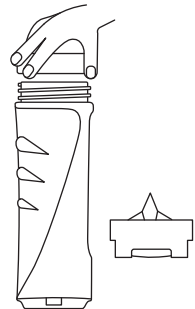
2. Fasten the Blade Assembly to the open end of the Sport Bottle. Turn the Sport Bottle upside down, line up the arrows on the Base, and place the Sport Bottle in the base.



3. Turn the Sport Bottle clockwise on the Base to lock it in position. Blending will start/stop when you press/release the Power Button. Turn the Sport Bottle back to the arrow to unlock from the Base.



4. Once your ingredients have blended, turn the Sport Bottle over and place on a flat surface. Remove the Blade Assembly with the Lid.



**This appliance is intended for blending liquids, dairy products, sauces, fruit juices, soups, and mixing drinks and shakes.**

**The blending process must be operated at 1-minute intervals.  
Always wait for 1 minute between blends to allow the appliance to cool.**

# CLEANING

Do not use abrasives, scourers or alcohol to clean the appliance.

**Never** immerse in water or place in the dishwasher.

1. Unplug the appliance and remove the detachable parts.
2. Clean them in lukewarm water with detergent and rinse. Alternatively, clean in a dishwasher.
3. If necessary, remove the rubber sealing ring from the Blade Assembly and rinse it with water.
4. **Only** use a damp cloth to clean the Base.


# TECHNICAL SPECIFICATIONS

Voltage: 220–240V~50Hz

Power: 350W

Capacity: 600ml

# PLUG

1. This appliance has been fitted with a BS UK compliant plug which should not be replaced or removed.
2. The plug is fitted with a UK compliant fuse link which is suitable for this type of appliance and should only be replaced by a fuse link of the same rating.
3. If access to the fuse link is only possible by removing the plug cover this must only be done by a suitably qualified person.
4. If the plug or the mains cable of this appliance is damaged do not use and dispose of the appliance responsibly.
5. This appliance is a Class 2 appliance protected by double and reinforced insulation and does not require earthing. Class 2 appliances are indicated by this  symbol marked on the appliance rating plate.



**Information on Waste Disposal for Consumers of Electrical & Electronic Equipment**



This symbol indicates that this product should not be treated as normal household waste and it should be recycled. Please take it to your nearest collection facility or for further details contact your local council or visit [www.recycle-more.co.uk](http://www.recycle-more.co.uk).



Importer UK: Benross Marketing Ltd, Liverpool L24,9HJ  
Importer EU: Benross Marketing Ltd, Italeiei 1-2000 Antwerp Belgium.  
Consumer Services: E: [afterservice@benross.com](mailto:afterservice@benross.com). T: +441518327600.  
Made in P.R.C.