



A super fund  
for **pharmacy**  
**professionals.**

**Member  
Benefits**





# Focussed on **pharmacy.**

For over 20 years, we've supported dedicated pharmacy professionals by making super easier to understand and focussed on what matters – you.

Here's how we can help you grow your super balance, so you can retire with confidence and dignity:

- **Personalised support** from our coaches, to help you understand your super in plain terms, and make the right choices for you
- **Tools and resources** to make your super easy-to-manage
- **Flexible investing** - Our default option moves from a growth focus when you're young to protection as you near retirement.

**Your dedication to your community is admirable, and it's important to prioritise your financial future too.**



Supporting You

# More than just super. We've got your back.

With easy-to-use tools and real support, we're here for you at every stage of your career.

## Super coaching and advice

---

Super coaching and advice at no extra cost, it's part of your membership\*

## Automatic insurance cover

---

Automatic insurance cover including Death, TPD and Income Protection

## Shopping rewards

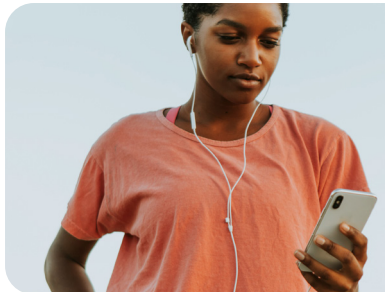
---

SUPERSUPER our shopping rewards program (*read more on page 4*).

## Education and resources

---

Education and resources that make sense, and make managing your super straightforward



## Health and wellness

---

Access to expert advice in physical and mental health plus nutrition, fitness and menopause support through the MetLife 360Health program

*\*The Coach team also provides advice to members about pensions and pension benefits, for a small additional fee.*



**SUPERSUPER**

# Grow your super while you shop.

Introducing **SUPERSUPER**, a simple way to boost your super balance.



## How it works

---

When you shop through SUPERSUPER and buy from participating retailers, a percentage of what you spend goes directly into your super account, on top of your usual contributions.

## Getting started is easy

---

Log in to your online account or download the GuildSuper app.

Want to learn more? Visit [guildsuper.com.au/supersuper](https://guildsuper.com.au/supersuper)



Coaching  
and Support



# Need help with your super? Talk to a real person.

Our super coaches are here to help, no jargon,  
just real guidance, at no extra cost\*.

We can support you with:

- **Choosing investments**
- **Reviewing insurance**
- **Understanding contributions**
- **Retirement planning**
- **Pension options**

Wherever you are in your pharmacy  
career, we're here with one-on-one  
support and advice to help you feel  
confident about the future.

Scan to book  
a call with a  
coach



Learn more about  
super coaching  
[guildsuper.com.au/coaching](https://guildsuper.com.au/coaching)

*\*The Coach team also provides advice to members about  
pensions and pension benefits, for a small additional fee.*

# Health and wellbeing support.



A GuildSuper membership includes a great perk 360Health – and your family<sup>1</sup> can benefit too.

360Health is an award-winning health and wellness program that gives you access to tailored fitness plans and nutrition advice, discreet mental wellness support<sup>2</sup>, expert second opinions from medical experts and menopause support (including perimenopause) from women's health nurses.

All services are delivered virtually and are available to you and your family<sup>1</sup>. It's all included in your membership at no extra cost. Just real support, made simple.

Find out more about 360Health [guildsuper.com.au/360health](https://guildsuper.com.au/360health)

<sup>1</sup> The term family consists of your children, partner, parents, and parents-in-law.

<sup>2</sup> Mental Wellness support is only available in respect of persons 18 years and above.

# Joining us is easy

Getting started with GuildSuper is simple, quick, and stress-free. When you open your account, we'll help you:

- **Set up and secure your account** with multi factor authentication
- **Let your employer know** your new super details
- **Find any other super you have** and roll it into your account

Less admin, more confidence.

**Join GuildSuper today.**



Certified



GuildSuper is part of Future Group, a certified B Corp™



---

## Get in touch



1300 361 477



@guildsuper.com.au



info@guildsuper.com.au



guildsuper.com.au

---

Ratings are only one factor to be taken into account when deciding whether to invest in a financial product. GuildSuper was awarded a 2026 Rainmaker Information AAA quality rating by assessing our performance, fees, insurance, operations and extra benefits against benchmarks. For more information visit [www.rainmaker.com.au/media-release/2026-aaa-superannuation-ratings](http://www.rainmaker.com.au/media-release/2026-aaa-superannuation-ratings). Guild Super is part of Future Group Australia, a B Corp™ certified by B Lab. For more information visit [www.bcorporation.net/en-us/find-a-b-corp/company/future-superannuation-holdings-pty-ltd](http://www.bcorporation.net/en-us/find-a-b-corp/company/future-superannuation-holdings-pty-ltd).

You should consider the different fees and costs, amount of insurance cover offered and any other relevant information before deciding to transfer your super. All information is general and does not take account of your personal objectives, financial situation or needs. Before deciding whether a particular product is appropriate for you, please read the relevant Product Disclosure Statement including any incorporated information, Target Market Determination and Financial Services Guide available at [guildsuper.com.au](http://guildsuper.com.au), and consider speaking with a GuildSuper Coach or a financial adviser.

360Health is provided by Teladoc Health Australasia Pty Ltd (ACN 147 387 666). It is intended to provide general health information and advice. Mental Health Assist is only available in respect of persons 18 years old or above. Learn more at <https://www.guildsuper.com.au/360health>. SUPERSUPER™ is a benefit provided to members of the Fund by the Promoter. SUPERSUPER™ is a rewards program where contributions are made to your superannuation account on a non-concessional basis and can only be accepted by GuildSuper if you have provided your Tax File Number (TFN) to the Fund. Contribution caps apply. Visit [guildsuper.com.au/supersuper](http://guildsuper.com.au/supersuper) for more information and full terms and conditions.

Published by Guild Super Services Pty Ltd ABN 79 672 642 394 AFS Representative No. 001306706, which is a Corporate Authorised Representative of Future Group Financial Services Pty Ltd ABN 90 167 800 580 AFSL 482684, as the Promoter of the Guild Retirement Fund ABN 22 599 554 834 (the Fund). Any intra-fund advice is provided by or on behalf of Future Group Financial Services Pty Ltd. The trustee of the Fund is Equity Trustees Superannuation Limited ABN 50 055 641 757 AFSL 229757 RSE Licence L0001458. GuildSuper, GuildPension and Child Care Super are products of the Fund. Apr 2026.