

Appendix 16: Additional data from Takahē Recovery Programme Annual Report 2017-18

YEAR	POPULATION	BREEDING PAIRS	EST. MORTALITIES (Subs and adults)	EST. RECRUITMENT	GROWTH	SECURE SITE + ADVOCACY	RECOVERY SITE	OVERALL RATE (%)
2000	221	50			0	85	136	0
2001	248	57			27	98	150	12.2
2002	246	57			-2	97	149	-0.8
2003	262	60			16	108	154	6.5
2004	287	72			25	115	172	9.5
2005	295	75			8	127	168	2.8
2006	295	76	36	36	0	123	172	0.0
2007	222	50	93	20	-73	127	95	-24.7
2008	228	55	20	26	6	122	106	2.7
2009	230	55	20	22	2	121	109	0.9
2010	252	60	13	35	22	142	110	9.6
2011	272	65	15	24	20	165	107	7.9
2012	257	66	24	24	-15	171	86	-5.5
2013	275	81	26	30	18	192	83	7.0
2014	279	87	29	43	4	202	77	1.5
2015	306	91	20	47	27	194	112	9.7
2016	347	106	20	61	41	209	138	13.4
2017	376	112	35	63	29	210	166	8.4

Table. 2 Summary population figures 2017-18

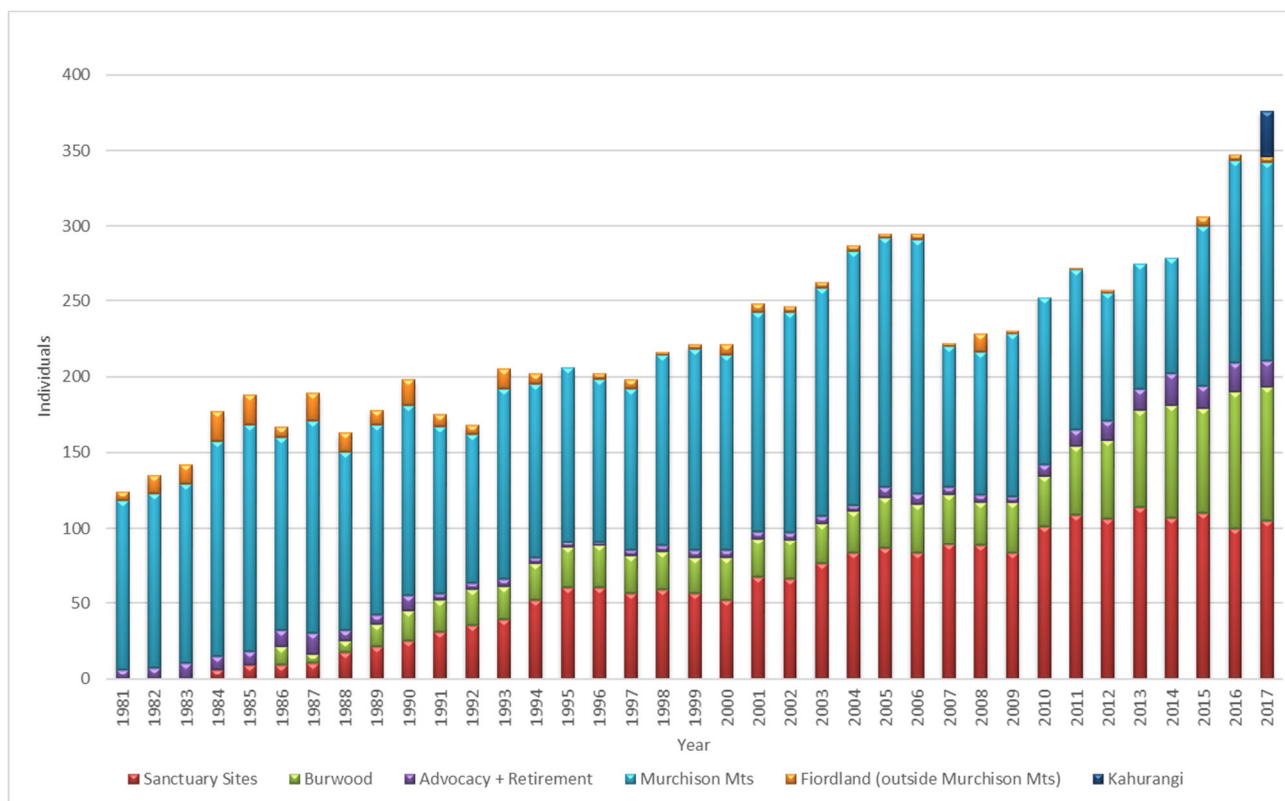


Figure.1 Takahē population

SITE	START POPn	BREEDING GRPS	RECRUITMENT***	MORTALITIES	REDISCOVERIES/ NEW ADULTS	TRANSFERS IN	TRANSFERS OUT	END POPn
Private Iwi Island 1	26	8	2	3	0	0	3	22
Burwood	91	19	24	4	0	25	48	88
TABS	4	1	1	1	0	1	1	4
Orokonui	5	1	1	0	0	0	4	2
Private Iwi Island 2	5	2	1	1	0	2	1	6
Mana	16	8	6	0	0	3	8	17
Kapiti	3	2	0	1	0	2	0	4
Cape Sanctuary	2	1	1	0	0	0	1	2
Maungatautari	4	2	2	0	0	0	0	6
Motutapu	17	7	3	2	0	5	2	21
Rotoroa	5	2	1	1	0	1	1	5
Tiritiri Matangi	5	2	2	0	0	0	2	5
Tawharanui	12	3	1	0	0	4	3	14
TOTAL	195	58	45	13	0	43	74	196

Table. 3 Secure site population summary 2017/18. Note: Orokonui Ecosanctuary and Te Anau Bird Sanctuary added to Secure Site list this year due to having breeding pairs. Both were previously considered Advocacy sites.

CATEGORY	NUMBER
Breeding Pairs (age >2)	19
Non-breeding Pairs	5
Eggs Produced	53
Fertile Eggs Produced	39
Eggs Transferred In	0
Eggs Transferred Out	1
Chicks Hatched	32
Chicks Alive @ 3 months (Juveniles)	25
Juveniles Transferred in	15
Juveniles Alive @ 30 Sep 2018 (Recruits)	39
Chick mortalities	7
Juvenile Mortalities	1
Adult/Subadult Mortalities	3
Takahē Transferred Out	48
Adult/Subadult Takahē Transferred In	8
Population @ 1/10/2017	91
Population @ 30/9/2018	88

Table. 4 Summary site performance figures 2017-18 (Burwood Takahe Centre)