

# Our air 2024

Across Aotearoa New Zealand as a whole, air quality is good compared to many other countries. However, poor air quality exists at particular places and times which has negative health impacts for people living there.

Particulate matter and nitrogen dioxide (NO<sub>2</sub>) are key pollutants that contribute to poor air quality.

**39%**

NO<sub>x</sub>



of emissions of nitrogen oxides (NO<sub>x</sub>) were from **road vehicles** in 2019.

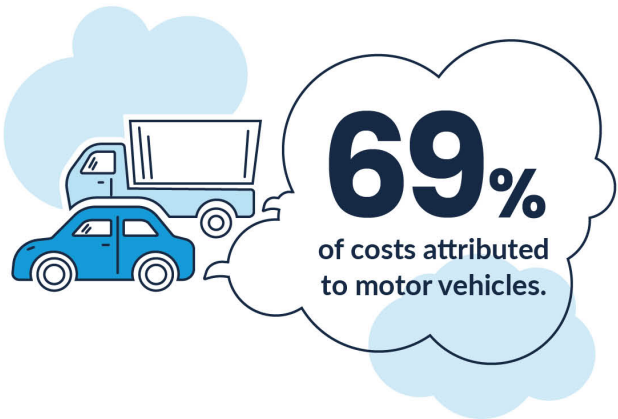
**30%**



of emissions of fine particulate matter (PM<sub>2.5</sub>) were from **home heating** in 2019.

In 2019 the annual social cost of air pollution was estimated at

**\$15.3 billion.**



Air quality is improving in most places where it is monitored.

**87%**

of NZTA sites had **improving NO<sub>2</sub> concentrations** between 2014 and 2023.

**75%**

of sites had **improving PM<sub>2.5</sub> concentrations** between 2016 and 2023.

**3,239**

premature adult deaths were linked to air pollution in 2019.

This was almost 10% of total deaths in Aotearoa.



Despite improvements in air quality at monitored sites, our growing understanding of health impacts shows that most air pollutants have no safe level.