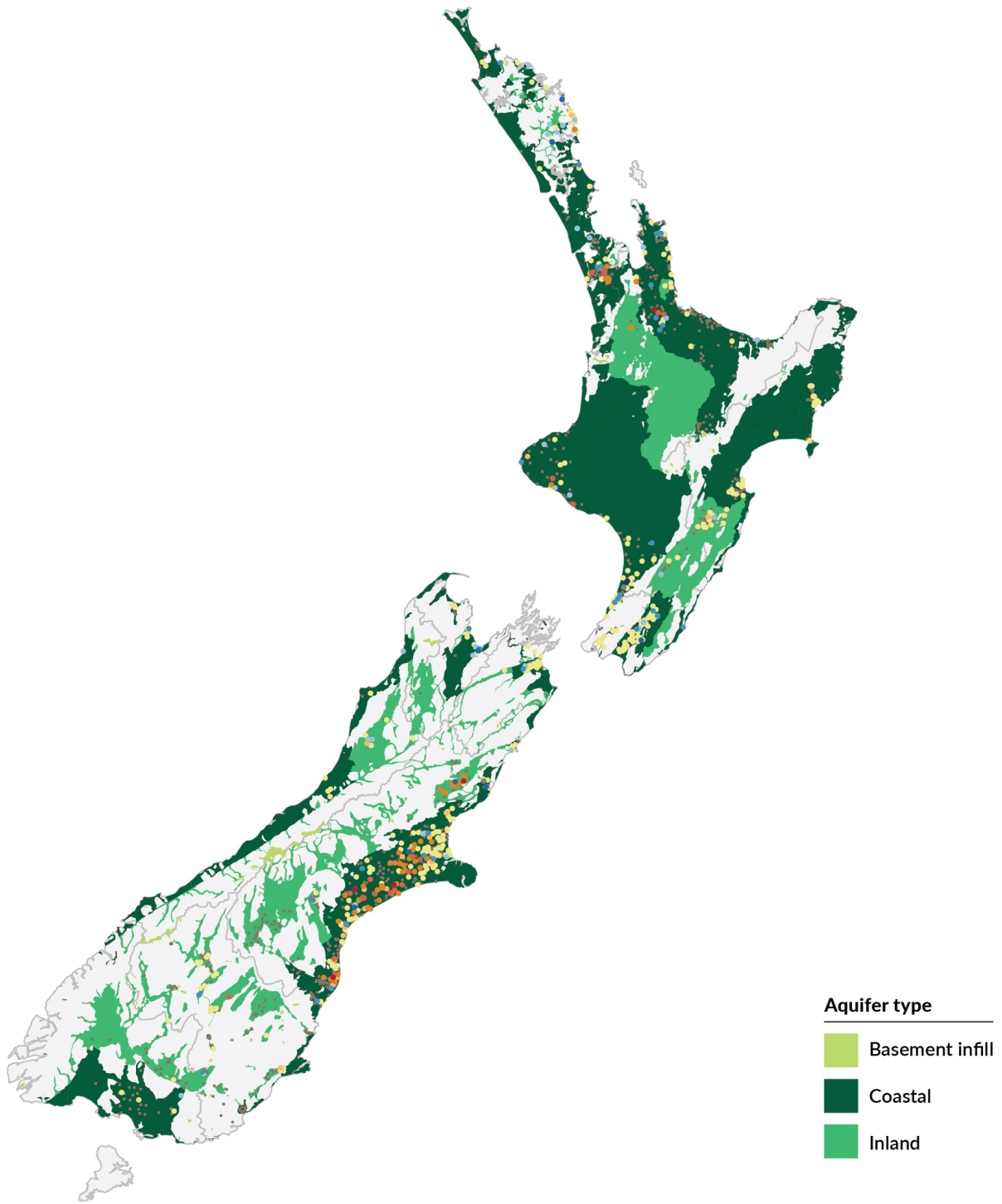


# Groundwater nitrate rates of change per year, 2004-2024, relative to reference values<sup>1</sup> for nitrate-nitrogen



<sup>1</sup> Colour scale indicates the annual rate of change relative to reference values for nitrate-nitrogen in New Zealand's groundwaters. The 0.0493 mg/L per year threshold is equal to 1/40<sup>th</sup> of the human impact reference value for nitrate-nitrogen (1.97 mg/L), and the 0.0985 mg/L per year threshold is equal to 1/20<sup>th</sup>; the 0.2820 mg/L per year