

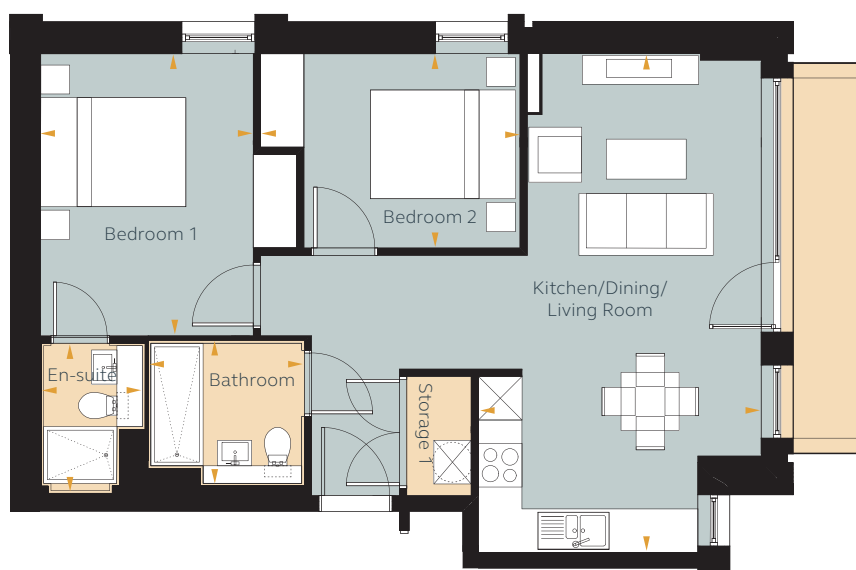
2 BEDROOM APARTMENT



THE
FILAMENTS

TYPE F

Units 302, 303*, 402, 403*, 502, 503*, 602, 603*, 702, 703*, 802, 803*, 902, 903*, 1002, 1003*, 1102, 1103*, 1202, 1203*, 1302, 1303*, 1402, 1403*, 1502, 1503*, 1602, 1603*, 1702, 1703*, 1802, 1803*, 1902, 1903*, 2002, 2003*, 2102, 2103*

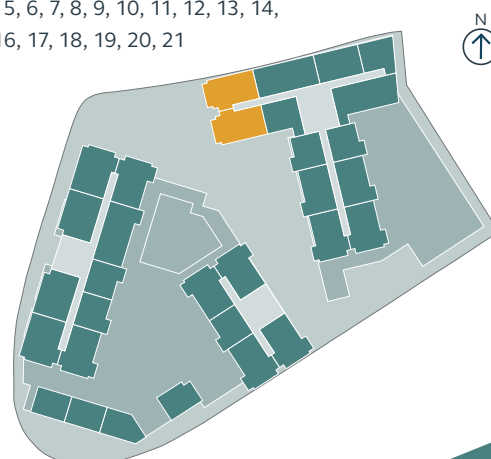


FLOOR AREAS

Kitchen/Dining/Living Room	3.22m x 6.87m	10' 7" x 22' 6"
Bedroom 1	3.53m x 3.89m	11' 7" x 12' 9"
En-suite	1.46m x 2.10m	4' 9" x 6' 11"
Bedroom 2	3.60m x 2.68m	11' 10" x 8' 10"
Bathroom	2.15m x 2.10m	7' 1" x 6' 11"
Storage	0.89m x 1.64m	2' 11" x 5' 5"
Total Area	62.40 sq m	671.67 sq ft

FLOOR LOCATOR

Block	C
Floor	3, 4, 5, 6, 7, 8, 9, 10, 11, 12, 13, 14, 15, 16, 17, 18, 19, 20, 21



These plans are to be used as a guide only to the apartment types available.
* Handed apartment