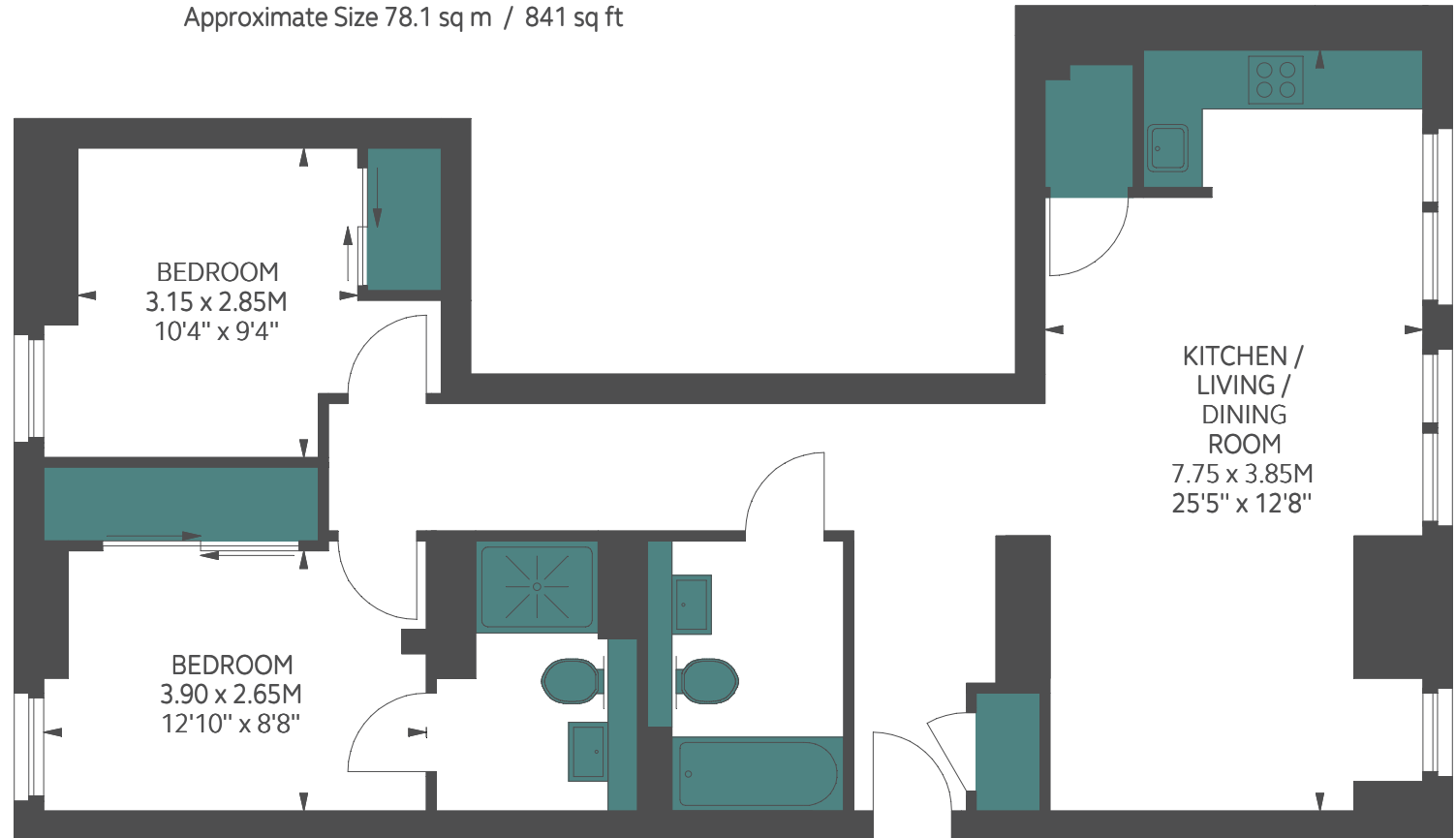
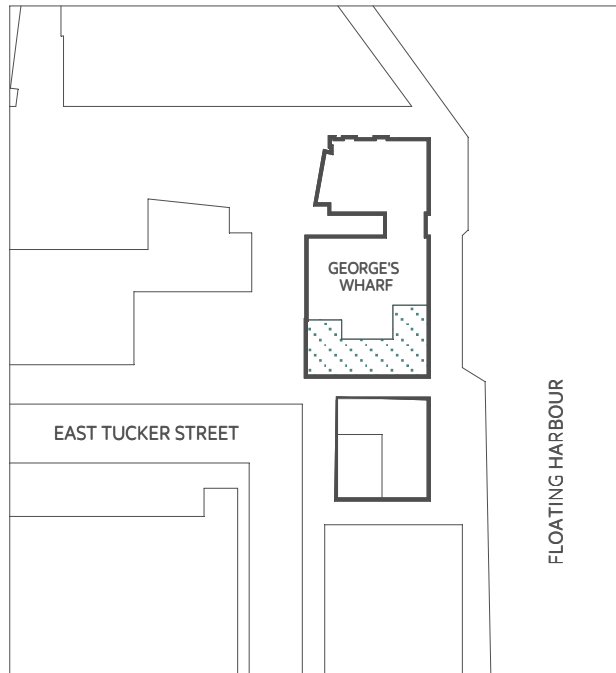




HAWKINS
& GEORGE

George's Wharf Apartments Apartment Type: 3

Approximate Size 78.1 sq m / 841 sq ft



Floor Plan produced for Grainger plc by Mays Floorplans © . Tel 020 3397 4594
Illustration for identification purposes only, not to scale
All measurements are maximum, and include wardrobes and window bays where applicable