

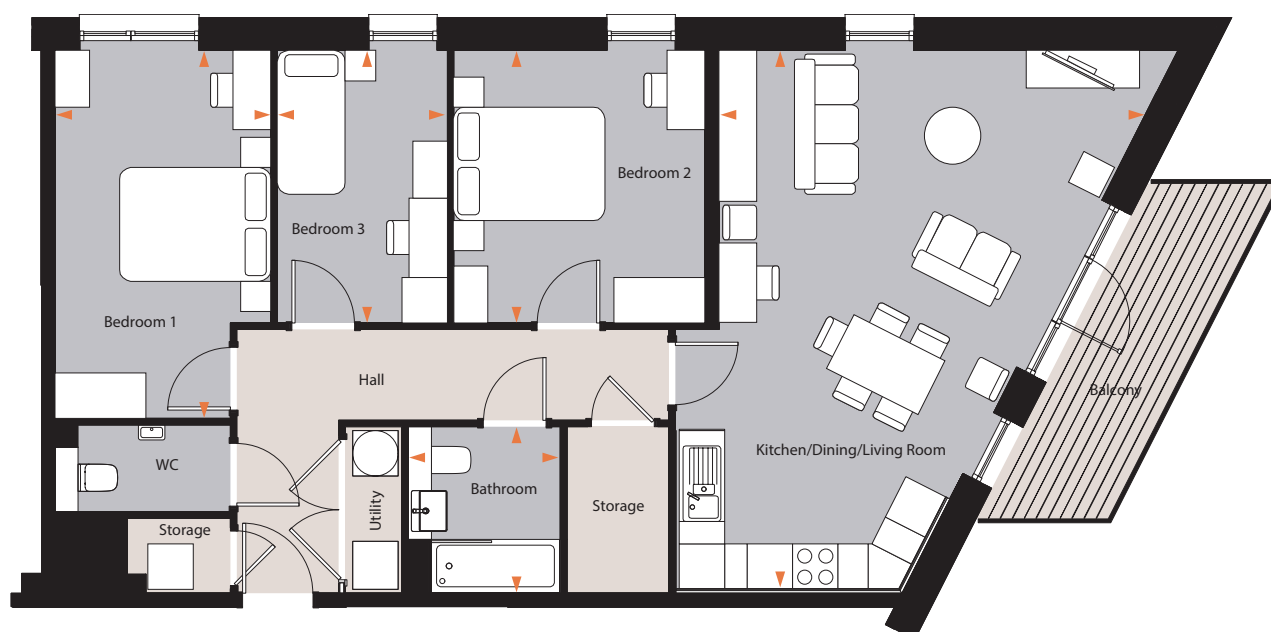


MILLET  
PLACE

## 3 Bedroom Apartment

### Poppy Apartments

Units 46, 50, 56, 62, 68, 74, 80

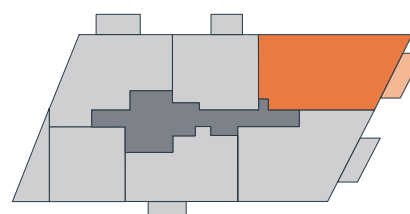


#### Floor areas

Kitchen/Dining/Living	5.34m x 7.18m	17' 6" x 23' 7"
Bedroom 1	2.85m x 4.87m	9' 4" x 16' 0"
Bedroom 2	3.33m x 3.61m	10' 11" x 11' 10"
Bedroom 3	2.25m x 3.61m	7' 5" x 11' 10"
Bathroom	2.02m x 2.20m	6' 8" x 7' 3"
WC	2.32m x 1.15m	7' 7" x 3' 9"
<b>Total Area (NIA)</b>	<b>93 sq m</b>	<b>1,001 sq ft</b>
Balcony	8.3 sq m	89 sq ft

#### Floor locator

**Block** A  
**Floor** 8, 9, 10, 11, 12, 13, 14



These plans are to be used as a guide only to the apartment types available.

All measurements are estimated and for guidance only.

