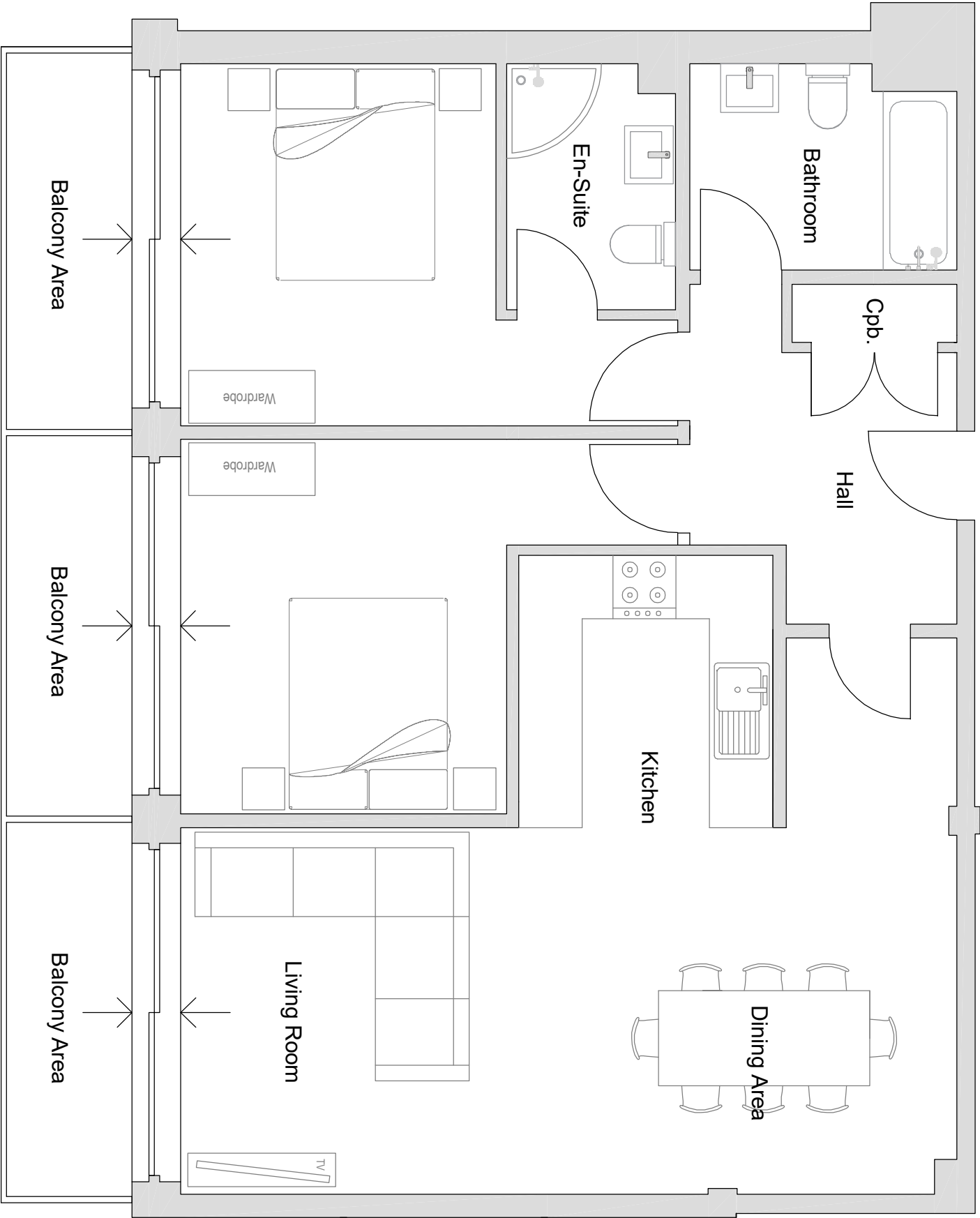


864 Sqft



Proposed General Arrangement

<div><div><div>granger plc</div><div>3rd Floor, East Building 1 London Bridge London SE1 9SG</div></div><div><div>Telephone: +44 (0) 207 840 9500</div><div>Faxsimile: +44 (0) 207 940 9501</div><div>http://www.grangerplc.co.uk</div></div></div> <div><div>granger plc</div><div>Registered in England No. 125575 Registered office: Citygate, St James' Boulevard Newcastle upon Tyne, UK NE1 4JE</div></div>	
Proposals are subject to approvals by statutory authorities. All dimensions must be checked on site and not scaled from the drawing	
Client: Grainger plc	Scale: 1:50 @ A3
Date: November 2019	Drawing No. 28GH 02
Project: 28 Grove House	
Proposed General Arrangement	Drawing By: James Peppiatt