

1 bedroom apartment

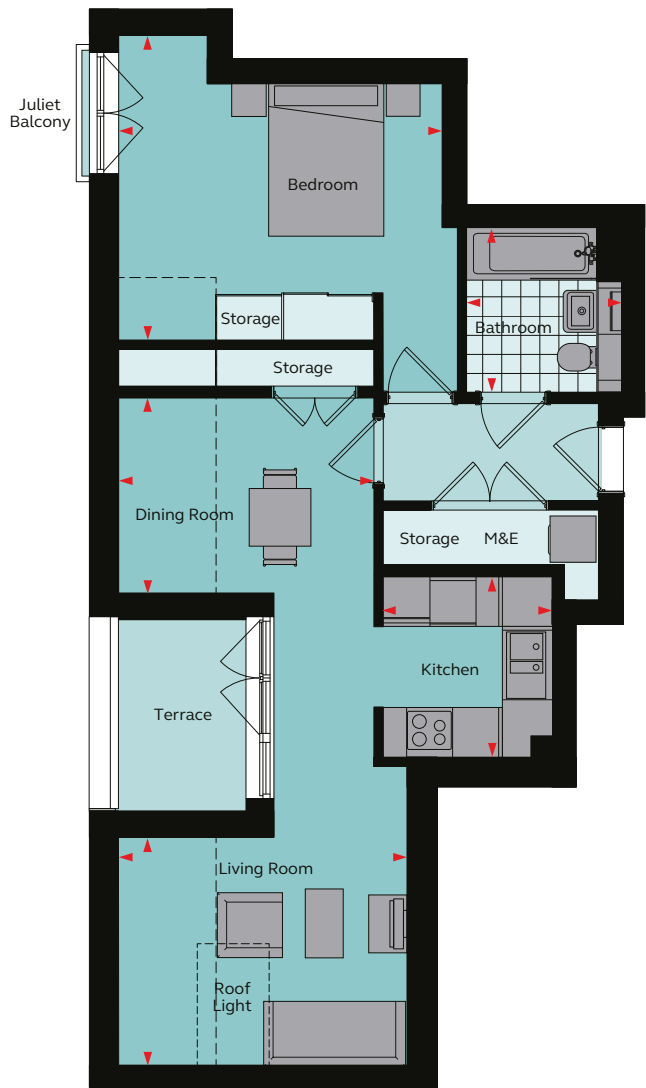
Farrow House

Type H

Apartment No. 25



WEAVERS
YARD



Floor areas

Kitchen	2.35m x 2.21m	7' 9" x 7' 3"
Living Room	2.97m x 3.75m	9' 9" x 12' 4"
Dining Room	2.54m x 3.32m	8' 4" x 10' 11"
Bedroom 1	3.98m x 4.20m	13' 1" x 13' 9"
Bathroom	2.15m x 2.02m	7' 1" x 6' 8"
Total Area	60.0 sq m	645.8 sq ft

Site plan

Floor 5



These plans are to be used as a guide only and are for illustrative purposes to the apartment types and sizes available. * Handed apartment

Rent well. Live well.

grainger