

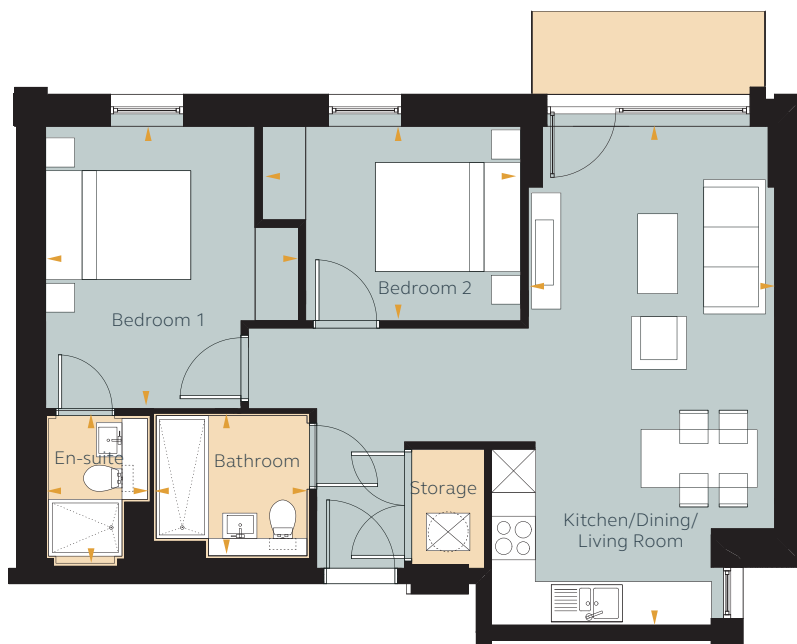
# 2 BEDROOM APARTMENT

## TYPE Q

Units 310, 311\*, 410, 411\*, 510, 511\*, 610, 611\*, 710, 711\*, 808, 809\*, 909, 910\*, 1009, 1010\*, 1109, 1110\*, 1209, 1210\*, 1309, 1310\*, 1409, 1410\*



THE  
FILAMENTS

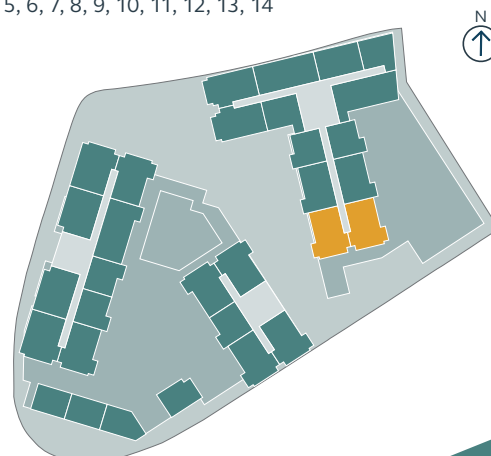


### FLOOR AREAS

Kitchen/Dining/Living Room	3.39m x 6.87m	11' 1" x 22' 6"
Bedroom 1	3.48m x 3.89m	11' 5" x 12' 9"
En-suite	0.00m x 2.13m	0' 0" x 7' 0"
Bedroom 2	3.56m x 2.69m	11' 8" x 8' 10"
Bathroom	0.00m x 2.13m	0' 0" x 7' 0"
Storage	1.00m x 1.64m	3' 3" x 5' 5"
<b>Total Area</b>	<b>63.10 sq m</b>	<b>679.20 sq ft</b>

### FLOOR LOCATOR

<b>Block</b>	C
<b>Floor</b>	3, 4, 5, 6, 7, 8, 9, 10, 11, 12, 13, 14



These plans are to be used as a guide only to the apartment types available.  
\* Handed apartment. Note: Apartments 1209 and 1210 have 'eye brow' windows facing out of the site.