

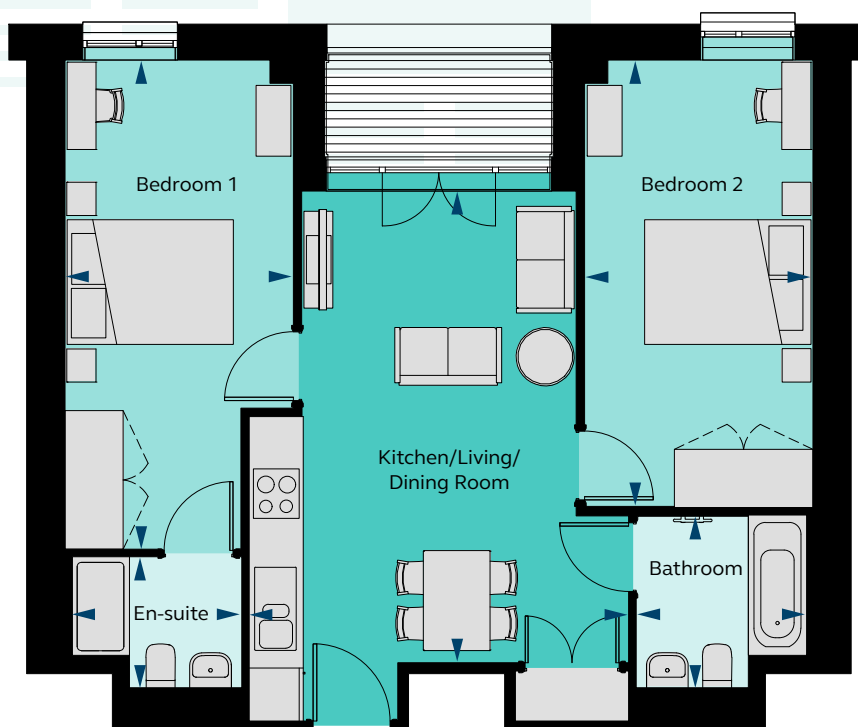
## 2 BEDROOM APARTMENT

### Type C

Units 101\*, 115, 201\*, 215, 301\*, 315, 401\*, 415, 501\*, 515, 601\*, 615, 701\*, 715, 801\*, 815, 901\*, 915, 1001\*, 1015, 1101\*, 1111, 1201\*, 1211, 1301\*, 1311



THE  
HEADLINE



### Floor areas

Kitchen/Dining/Living Room	4.52m x 5.63m	14' 10" x 18' 6"
Bedroom 1	2.71m x 5.84m	8' 11" x 19' 2"
En-suite	2.00m x 1.54m	6' 7" x 5' 1"
Bedroom 1	2.71m x 5.33m	8' 11" x 17' 6"
Bathroom	2.01m x 2.02m	6' 7" x 6' 8"
<b>Total Area</b>	<b>61.00 sq m</b>	<b>656.60 sq ft</b>

### Floor locator

<b>Floor</b>	1, 2, 3, 4, 5, 6, 7, 8, 9, 10, 11, 12, 13
--------------	--



These plans are to be used as a guide only to the apartment types available.  
\* Handed apartment