

1 bedroom apartment

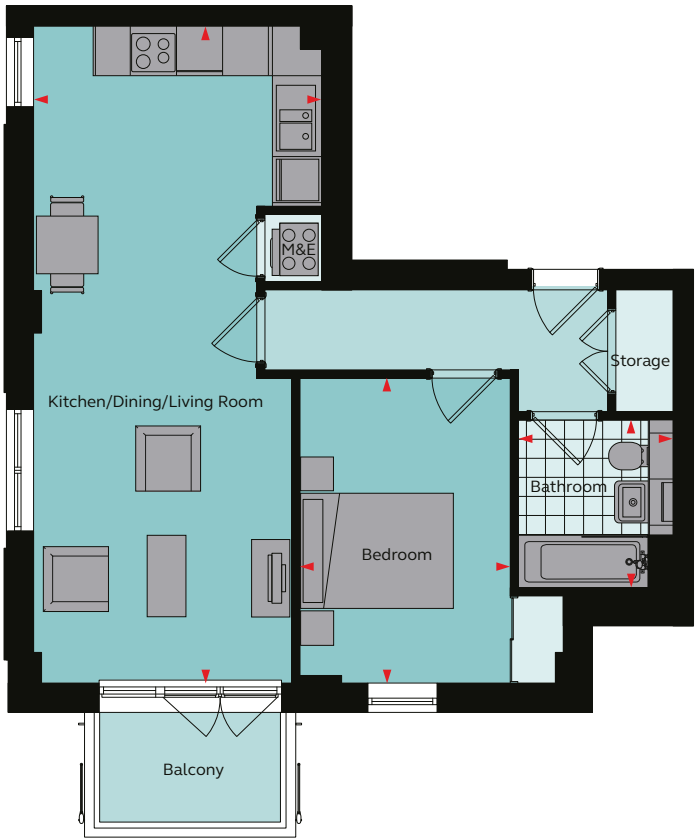
Farrow House

Type A

Apartment No. 6, 12, 18, 24



WEAVERS
YARD



Floor areas

Kitchen/Dining/Living Room	3.75m x 8.54m	12' 4" x 28' 0"
Bedroom 1	2.75m x 3.97m	9' 0" x 13' 0"
Bathroom	2.30m x 2.30m	7' 7" x 7' 7"
Total Area	54.0 sq m	581.3 sq ft

Site plan

Floor 1, 2, 3, 4



These plans are to be used as a guide only and are for illustrative purposes to the apartment types and sizes available. * Handed apartment

Rent well. Live well.

grainger