

2 bedroom apartment

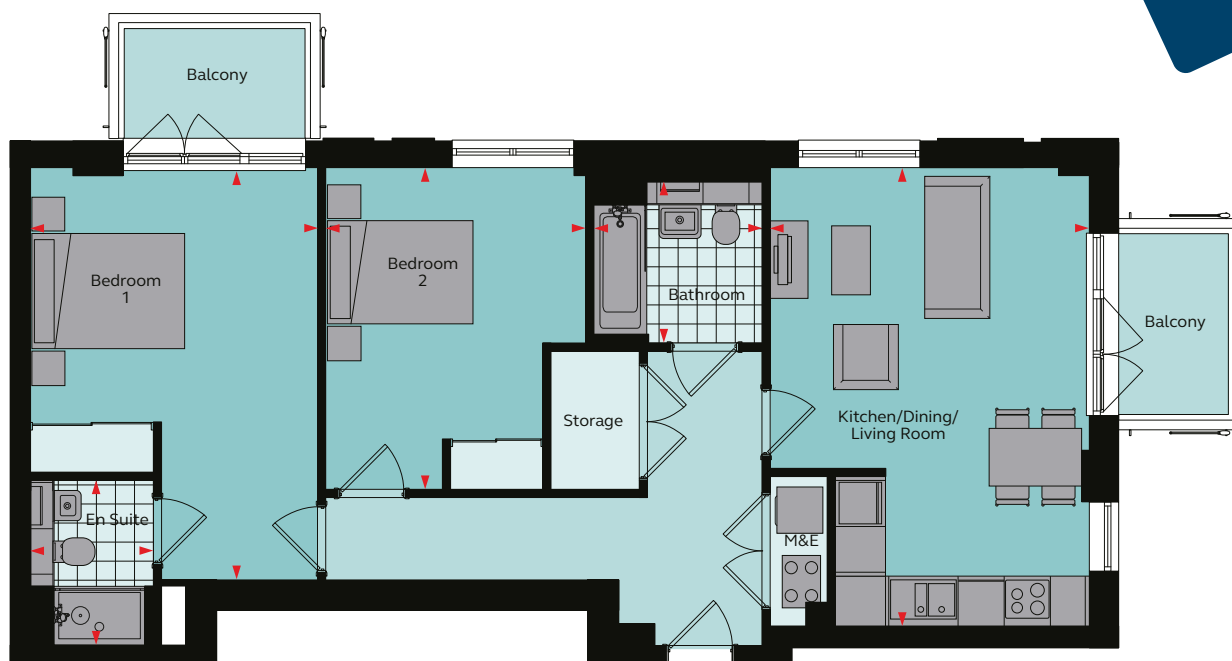
Farrow House

Type F

Apartment No. 5, 11, 17, 23



WEAVERS
YARD



Floor areas

| | | |
|----------------------------|------------------|--------------------|
| Kitchen/Dining/Living Room | 4.15m x 5.96m | 13' 7" x 19' 7" |
| Bedroom 1 | 3.74m x 5.36m | 12' 3" x 17' 7" |
| En-suite | 1.60m x 2.15m | 5' 3" x 7' 1" |
| Bedroom 2 | 3.39m x 4.19m | 11' 1" x 13' 9" |
| Bathroom | 2.20m x 2.09m | 7' 3" x 6' 10" |
| Total Area | 81.0 sq m | 871.9 sq ft |

These plans are to be used as a guide only and are for illustrative purposes to the apartment types and sizes available. * Handed apartment

Site plan

Floor 1, 2, 3, 4



Rent well. Live well.

grainger