

## 2 Bedroom Apartment

### Nautilus Apartments - Type G



FORTUNES  
DOCK



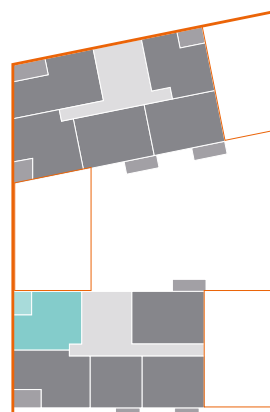
#### Floor areas

Kitchen/Dining/Living Room	5.29m x 4.63m	17' 4" x 15' 2"
Bedroom 1	3.37m x 3.41m	11' 0" x 11' 2"
Bedroom 2	3.25m x 3.41m	10' 8" x 11' 2"
Bathroom	2.10m x 2.10m	6' 1" x 6' 11"
<b>Total Area</b>	<b>64.0 sq m</b>	<b>688.9 sq ft</b>

These plans are to be used as a guide only and are for illustrative purposes to the apartment types and sizes available. \* Handed apartment

#### Floor locator

Floor 8, 9



Rent well. Live well.

grainger