

2 bedroom apartment

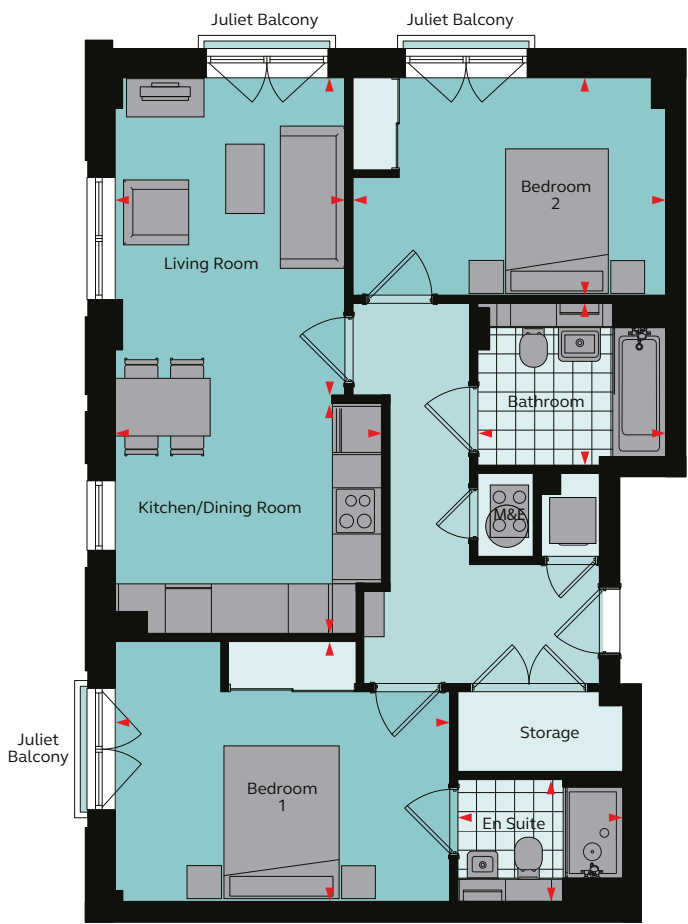
Farrow House

Type C

Apartment No. 2, 8, 14, 20



WEAVERS
YARD



Floor areas

Kitchen	3.47m x 3.10m	11' 5" x 10' 2"
Dining/Living Room	3.00m x 4.13m	9' 11" x 13' 7"
Bedroom 1	4.36m x 3.39m	14' 4" x 11' 1"
En-suite	2.15m x 1.60m	7' 1" x 5' 3"
Bedroom 2	4.07m x 2.83m	13' 4" x 9' 3"
Bathroom	2.45m x 2.12m	8' 0" x 6' 11"
Total Area	73.0 sq m	785.8 sq ft

Site plan

Floor 1, 2, 3, 4



These plans are to be used as a guide only and are for illustrative purposes to the apartment types and sizes available. * Handed apartment

Rent well. Live well.

grainger