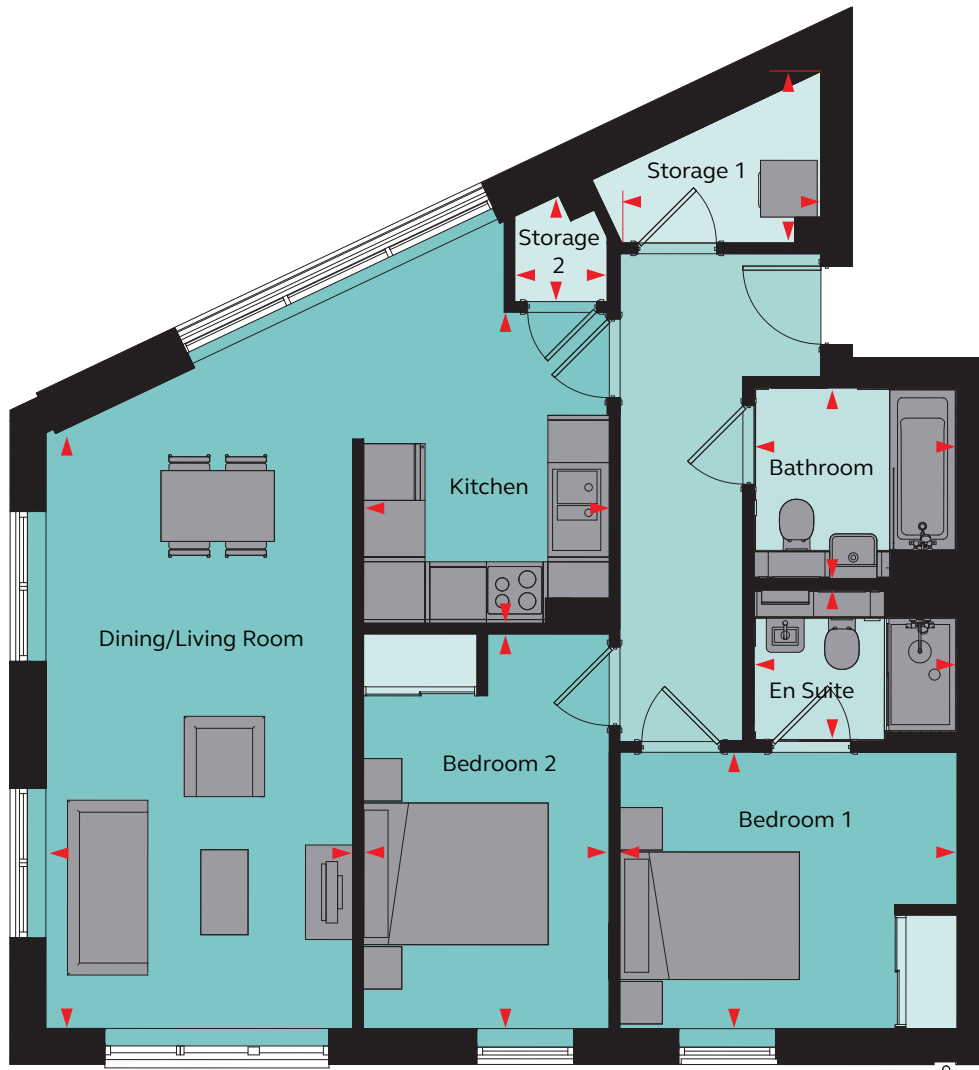


2 Bedroom Apartment

Type C-08
Apartments 14



WEAVERS
YARD



Floor areas

Kitchen	2.60m x 3.29m	8' 6" x 10' 10"
Dining/Living Room	3.21m x 6.25m	10' 6" x 20' 6"
Bedroom 1	3.57m x 2.88m	11' 9" x 9' 5"
En Suite	2.15m x 1.60m	7' 1" x 5' 3"
Bedroom 2	2.65m x 4.13m	8' 8" x 13' 7"
Bathroom	2.15m x 2.02m	7' 1" x 6' 8"
Storage 1	2.13m x 1.83m	7' 0" x 6' 0"
Storage 2	0.98m x 1.13m	3' 3" x 3' 8"
Total Area	77.0 sq m	828.8 sq ft

Purl House floor locator

Floor 3



These plans are to be used as a guide only to the apartment type and sizes available.