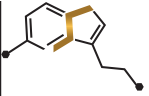


Sero-Lean Meal



orders@serotoninutraceuticals.com | www.SerotoninNutraceuticals.com
SEROTONIN NUTRACEUTICALS LLC.
7790 Wintergarden Vineland Suite 100
Windermere FL 34786



Clinical Applications

- Supports Protein Metabolism and Healthy Body Composition*
- Supports Cardiovascular Health*
- Supports Gastrointestinal Health*
- Supports Antioxidant Systems*
- Provides Essential Micronutrients*

Sero-Lean Meal is a nutrient-rich shake mix ideal for vegans, individuals sensitive or allergic to soy and/or dairy, or those seeking an alternative source of quality protein. Sero-Lean Meal features Vegan Protein Blend, an all-natural pea and rice protein blend; Aminogen®, a plant enzyme that enhances protein digestibility and absorption; and chitin-glucan, a novel fiber that supports antioxidant systems in the body. This sugar- and stevia- free formula provides an array of micronutrients, including high-potency B12, activated B vitamins, and Albion® TRAACS® chelated minerals (the real amino acid chelate system).*

All Serotonin Nutraceuticals LLC. Formulas Meet or Exceed cGMP Quality Standards

Discussion

Vegan Protein Blend, Serotonin Nutraceuticals LLC's proprietary blend of highly digestible pea protein isolate, glycine, taurine, rice protein concentrate, and L-glutamine, is the cornerstone of Sero-Lean Meal. Aminogen is added to enhance protein digestion and absorption.^[1] The combination of pea protein and rice protein achieves an amino acid score of 100% and supports protein metabolism and healthy body composition.*^[2]

Protein is required for cell and tissue repair, hormone and enzyme synthesis, and a variety of metabolic functions. It is especially important for maintaining lean body mass during increased physical activity. Protein supplementation has been found to be a determining factor in increasing fat-free mass and exercise-stimulated fat oxidation. Subjects who consumed a significantly higher protein intake (~80 g/d versus ~59 g/d) experienced a significant increase in fat oxidation and fat-free mass with a significant decrease in fat mass and body fat percentage.^[3] Studies have indicated that increased protein intake enhances satiety^[2,4-6] and supports diminished food intake during subsequent meals.^[7] One randomized crossover study suggested that pea protein was superior to milk protein with respect to satiety and intermeal interval.^[8] Research has also demonstrated that pea protein stimulates release of cholecystokinin and glucagon-like peptide 1, gastrointestinal hormones that modulate appetite sensations.*^[9]

While pea-based protein provides a satisfying and versatile source of protein, it also supports cardiovascular health. Animal studies have suggested that it positively affects lipid homeostasis by modulating gene expression; that is, upregulating genes that affect hepatic cholesterol uptake and downregulating genes that affect fatty acid synthesis.*^[10,11]

Chitin-Glucan is incorporated into Sero-Lean Meal to support antioxidant activity and cardiovascular health. Artinia is a purified, insoluble, gluten-free fiber ingredient composed of chitin (N-acetyl-D-glucosamine) and beta(1,3)-glucan chains.^[12] Artinia has been researched for its effects on maintaining oxidative balance and artery health, key components of cardiovascular health. A 12-week animal study indicated that chitin-glucan supports cardiovascular health by maintaining healthy arteries, reducing cardiac superoxide anion and liver malondialdehyde (markers of oxidation), and enhancing superoxide dismutase and glutathione peroxidase activity.*^[13]

Human trials have revealed significantly positive results as well. A six-week, multicenter, randomized, double-blind, placebo-controlled study (n = 130) of Artinia revealed that 1.5 g/d significantly supported subjects' LDL cholesterol at levels already within normal range, and 4.5 g/d significantly supported subjects' natural antioxidant systems and oxidative balance of LDL cholesterol.^[14,15] A 28-day pilot study found Artinia to be safe and well-tolerated at a dose of 4.5 g/d.^[15] Sero-Lean Meal provides 2.25 g of Artinia per serving. Artinia is a healthy alternative to phytosterol supplementation and has not been observed to interfere with absorption of fat-soluble vitamins or antioxidants.*

Micronutrient Support Sero-Lean Meal delivers a balanced profile of vitamins, minerals, and antioxidants, nutrients vital to supporting the vast array of metabolic processes in the body.^[16] B vitamins are present in their bioactive forms, including riboflavin 5'-phosphate, pyridoxal 5'-phosphate, methylcobalamin, and 5-methyltetrahydrofolate as Quatrefolic®.*^[17]

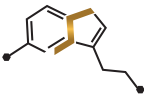
Sugar- and Stevia-Free This formula is sweetened with monk fruit extract in place of sugar or stevia. Animal and human research suggests that superfluous consumption of added sugars increases adiposity, disrupts lipid regulation, and elevates cardiometabolic risk.*^[18-22]

Glutamine The conditionally essential amino acid glutamine is important for replenishing amino acid stores, especially after exercise or stress.^[23] Glutamine also supports intestinal cell proliferation and thereby preserves gut barrier function and intestinal health.*^[24-26]

Inulin This soluble fiber is fermented by colonic bacteria into short-chain fatty acids that exert a positive effect on lipid metabolism and support healthy colon transit time.*^[27,28]

***These statements have not been evaluated by the Food and Drug Administration. This product is not intended to diagnose, treat, cure, or prevent any disease.**

Sero-Lean Meal



Dutch Chocolate Sugar- & Stevia-Free[‡]

Supplement Facts

Serving Size: 1 Packet (about 35 g)
Servings Per Container: 10

	Amount Per Serving	%DV
Calories	120	
Total Fat	2 g	3% [†]
Saturated Fat	1 g	5% [†]
Total Carbohydrate	10 g	4% [†]
Dietary Fiber	8 g	29% [†]
Protein (from Pea Protein Isolate and Rice Protein Concentrate)	15 g	
Vitamin A (75% as natural beta-carotene and 25% as retinyl palmitate)	560 mcg	62%
Vitamin C (as sodium ascorbate, potassium ascorbate, zinc ascorbate, and calcium ascorbate)	125 mg	139%
Vitamin E (as d-alpha tocopheryl succinate)	33.5 mg	223%
Thiamin (as thiamine mononitrate)	5 mg	417%
Riboflavin (as riboflavin 5'-phosphate sodium)	5 mg	385%
Niacin (as niacinamide and niacin)	16 mg	100%
Vitamin B6 (as pyridoxal 5'-phosphate)	5 mg	294%
Folate (as [6S]-5-methyltetrahydrofolic acid, glucosamine salt) ^{S1}	100 mcg DFE	25%
Vitamin B12 (as methylcobalamin)	125 mcg	5208%
Biotin	250 mcg	833%
Pantothenic Acid (as d-calcium pantothenate)	50 mg	1000%
Choline (as choline dihydrogen citrate)	9 mg	2%
Calcium (as dicalcium malate ^{S2} and ingredients with naturally occurring calcium)	45 mg	3%
Iron (naturally occurring)	4 mg	22%
Iodine (as potassium iodide)	25 mcg	17%
Magnesium (as di-magnesium malate) ^{S2}	25 mg	6%
Zinc (as zinc bisglycinate chelate) ^{S2}	3.25 mg	30%
Selenium (as selenium glycinate complex) ^{S2}	25 mcg	45%
Manganese (as manganese bisglycinate chelate) ^{S2}	0.125 mg	5%
Chromium (as chromium nicotinate glycinate chelate) ^{S2}	125 mcg	357%
Molybdenum (as molybdenum glycinate chelate) ^{S2}	12.5 mcg	28%
Sodium (naturally occurring)	330 mg	14%
Potassium (from tripotassium citrate, potassium glycinate complex ^{S2} , and ingredients with naturally occurring potassium)	330 mg	7%
Chitin-glucan (from <i>Aspergillus niger</i>) ^{S3}	2.25 g	**
Mixed Tocopherols	18 mg	**
Inositol	9 mg	**
PABA (<i>para</i> -aminobenzoic acid)	3.25 mg	**
Vanadium (as vanadium nicotinate glycinate chelate) ^{S2}	187.5 mcg	**

References

1. Other ingredients include (from choline) natural flavors (in MSG-free form), octenolene, medium-chain triglyceride oil, taurine, sunflower oil, cellulose gum, vanillin, dimethylsiloxane, sucralose, erythritol, guar gum, and L-glutamine.

2. Vanishing abdominal masses? Some fruits extract guar gum and L-glutamine, energetics, weight loss and health. *Br J Nutr.* 2012 Aug;108 Suppl 2:S105-12. Review. [PMID: 23107521]

3. Soenen S, Plasqui G, Smeets AJ, et al. Protein intake induced an increase in exercise stimulated fat oxidation during stable body weight. *Physiol Behav.* 2010 Dec 2;101(5):770-4. [PMID: 20826169]

4. Halton TL, Hu FB. The effects of high protein diets on thermogenesis, satiety and weight loss: a critical review. *J Am Coll Nutr.* 2004 Oct;23(5):373-85. Review. [PMID: 15466943]

5. Anderson GH, Moore SE. Dietary proteins in the regulation of food intake and body weight in humans. *J Nutr.* 2004 Apr;134(4):974S-9S. Review. [PMID: 15051857]

6. Veldhorst M, Smeets A, Soenen S, et al. Protein-induced satiety: effects and mechanisms of different proteins. *Physiol Behav.* 2008 May 23;94(2):300-7. Review. [PMID: 18282589]

7. Johnstone AM, Stubbs RJ, Harbron CG. Effect of overfeeding macronutrients on day-to-day food intake in man. *Eur J Clin Nutr.* 1996 Jul;50(7):418-30. [PMID: 8862477]

8. Diepvens K, Häberer D, Westerterp-Plantenga M. Different proteins and biopeptides differently affect satiety and anorexigenic/orexigenic hormones in healthy humans. *Int J Obes (Lond).* 2008 Mar;32(3):510-8. [PMID: 18345020]

9. Geraets MC, Troost FJ, Tinnemans R, et al. Release of satiety hormones in response to specific dietary proteins is different between human and murine small intestinal mucosa. *Ann Nutr Metab.* 2010;56(4):308-13. [PMID: 20530962]

10. Rigamonti E, Parolini C, Marchesi M, et al. Hypolipidemic effect of dietary pea proteins: impact on genes regulating hepatic lipid metabolism. *Mol Nutr Food Res.* 2010 May;54 Suppl 1:S24-30. [PMID: 20077421]

11. Parolini C, Manzini S, Busnelli M, et al. Effect of the combinations between pea proteins and soluble fibres on cholesterolaemia and cholesterol metabolism in rats. *Br J Nutr.* 2013 Oct;110(8):1394-401. [PMID: 23458494]

12. Stratium Nutrition. Artinia™ technical data. <http://ckgredients.com/pdf/Products-Artinia.pdf>. Accessed January 24, 2017.

13. Berecochea-Lopez A, Decordé K, Ventura E, et al. Fungal chitin-glucan from *Aspergillus niger* efficiently reduces aortic fatty streak accumulation in the high-fat fed hamster, an animal model of nutritionally induced atherosclerosis. *J Agric Food Chem.* 2009 Feb 11;57(3):1093-8. [PMID: 19154104]

14. Bays HE, Evans JL, Maki KC, et al. Chitin-glucan fiber effects on oxidized low-density lipoprotein: a randomized controlled trial. *Eur J Clin Nutr.* 2013 Jan;67(1):2-7. [PMID: 22948945]

15. Deschamps A, Nollevaux G, Gautier S, et al. Managing oxidative stress with a vegetal ingredient, chitin-glucan. *Agrofood.* 2009;20(4):12-14. [on file]

16. Ames BN. A role for supplements in optimizing health: the metabolic tune-up. *Arch Biochem Biophys.* 2004 Mar 1;423(1):227-34. [PMID: 14989256]

17. Quatrefolic. <http://www.quatrefolic.com/>. Accessed January 24, 2017.

18. Stanhope KL, Schwarz JM, Keim NL, et al. Consuming fructose-sweetened, not glucose-sweetened, beverages increases visceral adiposity and lipids and decreases insulin sensitivity in overweight/obese humans. *J Clin Invest.* 2009 May;119(5):1322-34. [PMID: 19381015]

19. Pollock NK, Bundy V, Kanto W, et al. Greater fructose consumption is associated with cardiometabolic risk markers and visceral adiposity in adolescents. *J Nutr.* 2012 Feb;142(2):251-57. [PMID: 22190023]

20. Stanhope KL, Havel PJ. Fructose consumption: recent results and their potential implications. *Ann N Y Acad Sci.* 2010 Mar;1190:15-24. Review. [PMID: 20388133]

21. Stanhope KL, Havel PJ. Fructose consumption: considerations for future research on its effects on adipose distribution, lipid metabolism, and insulin sensitivity in humans. *J Nutr.* 2009 Jun;139(6):1236S-1241S. [PMID: 19403712]

22. DiNicolantonio JJ, Berger A. Added sugars drive nutrient and energy deficit in obesity: a new paradigm. *Open Heart.* 2016 Aug 2;3(2):e000469. [PMID: 27547437]

23. Castell L. Glutamine supplementation in vitro and in vivo, in exercise and in immunodepression. *Sports Med.* 2003;33(5):323-45. Review. [PMID: 12696982]

24. Chwals WJ. Regulation of the cellular and physiological effects of glutamine. *Mini Rev Med Chem.* 2004 Oct;4(8):833-8. Review. [PMID: 15544544]

25. McAnena OJ, Moore FA, Moore EE, et al. Selective uptake of glutamine in the gastrointestinal tract: confirmation in a human study. *Br J Surg.* 1991 Apr;78(4):480-82. [PMID: 1903318]

26. Souba WW, Klimberg VS, Plumley DA, et al. The role of glutamine in maintaining a healthy gut and supporting the metabolic response to injury and infection. *J Surg Res.* 1990 Apr;48(4):383-91. Review. [PMID: 2187115]

27. Roberfroid M. Dietary fiber, inulin, and oligofructose: a review comparing their physiological effects. *Crit Rev Food Sci Nutr.* 1993;33(2):103-48. Review. [PMID: 8257475]

28. Flamm G, Glimmann W, Kritchewsky D, et al. Inulin and oligofructose as dietary fiber: a review of the evidence. *Crit Rev Food Sci Nutr.* 2001 Jul;41(5):353-62. Review. [PMID: 11497328]

***These statements have not been evaluated by the Food and Drug Administration. This product is not intended to diagnose, treat, cure, or prevent any disease.**

Directions

Mix two scoops (35 g) in 6-8 oz of cold water and consume. Adjust amount of water according to thickness desired. May be used as a snack or meal supplement, or taken as directed by your healthcare professional.

Consult your healthcare professional prior to use. Individuals taking medication should discuss potential interactions with their healthcare professional. Do not use if tamper seal is damaged.

Formulated To Exclude

Wheat, gluten, yeast, soy protein, animal and dairy products, fish, shellfish, peanuts, tree nuts, egg, artificial colors, artificial sweeteners, and artificial preservatives.

‡This formula is not a low-calorie dietary supplement. Please see the Supplement Facts panel for more details.



S1. Quatrefolic™ is a registered trademark of Genosis S.p.A. Produced under US Patent 7,947,862.

S3. ARTINIA™ is a registered trademark of Novus Nutrition Brands, LLC. Protected by US patent 7,556,946.



S2. Albion™, DimaCap®, TRACS®, and the Albion Gold Medalion® are registered trademarks of Albion Laboratories, Inc. Malates covered by US patent 6,706,904.



S4. AMINOGEN™ is a registered trademark of Innophos Nutrition, Inc. AMINOGEN™ is protected under U.S. patent 5,387,422.

Typical Amino Acid Profile Per Serving:

Alanine	800 mg	Methionine	210 mg
Arginine	1,610 mg	Phenylalanine	1,020 mg
Aspartic Acid	2,120 mg	Proline	830 mg
Cysteine	190 mg	Serine	980 mg
Glutamic Acid	3,110 mg	Taurine	500 mg
Glycine	2,760 mg	Threonine	720 mg
Histidine	460 mg	Tryptophan	190 mg
Isoleucine	830 mg	Tyrosine	710 mg
Leucine	1,550 mg	Valine	930 mg
Lysine	1,320 mg		

SEROTONIN NUTRACEUTICALS LLC.
7790 Wintergarden Vineland Suite 100
Windermere FL 34786

orders@serotoninnutraceuticals.com | www.SerotoninNutraceuticals.com

DRS-315

REV. 02/25/21