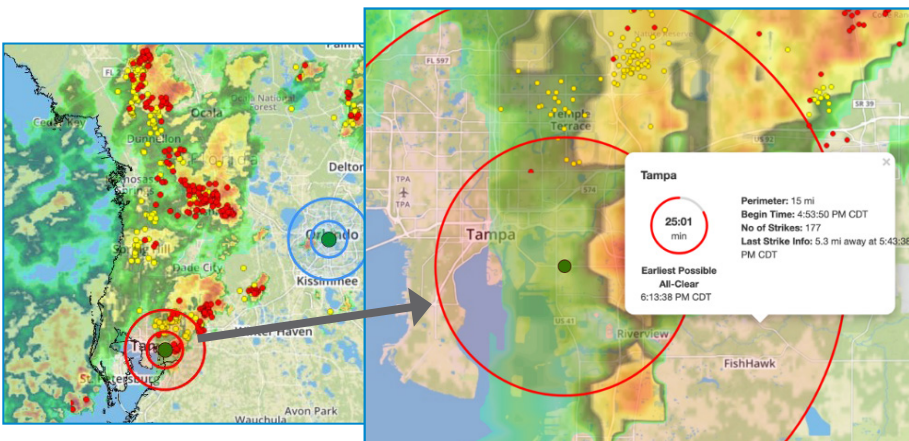


Lightning Solutions

Safeguard Employees While Increasing Operational Efficiency

Put crew safety on the front line with StormGeo's Lightning Solutions. Near real-time alerts and Advanced Lightning Modeling let you know where lightning strikes have been sighted and which areas are forecast to receive lightning in the near future. StormGeo's lightning alert, monitoring and planning tools ensure crews are protected from potentially fatal disasters, and operations are running efficiently to reduce downtime.

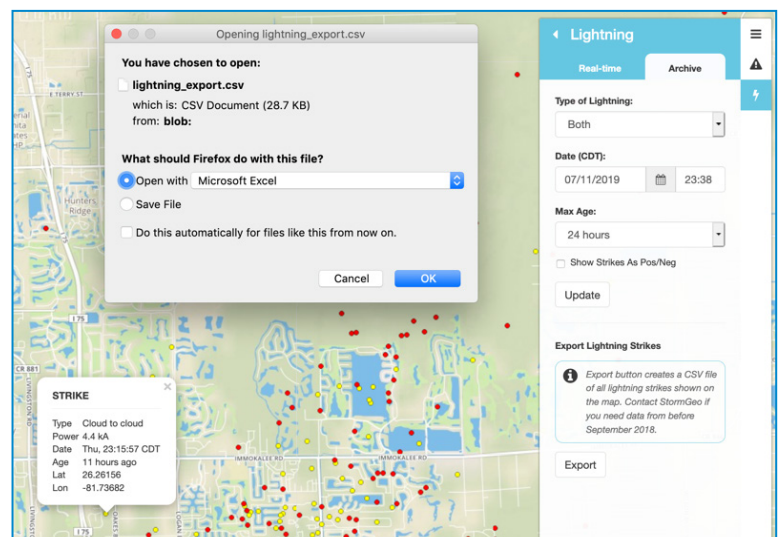


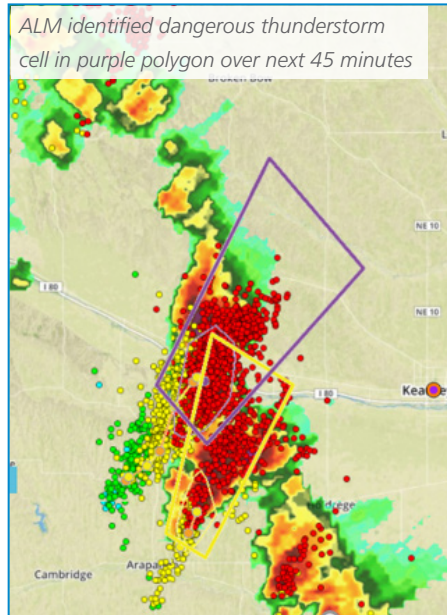
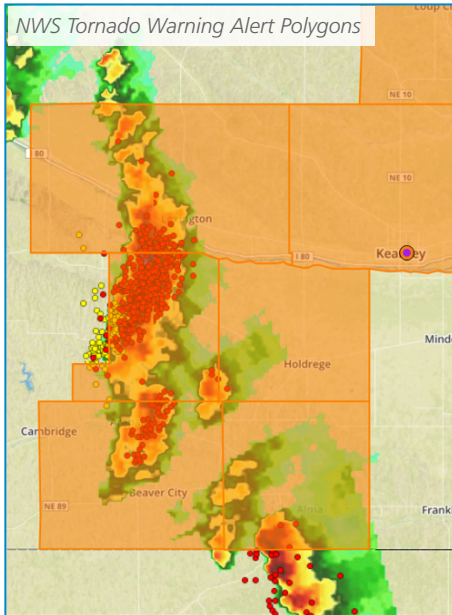
Lightning Proximity Alerts

- >95% Cloud to Ground strike recognition with accuracy to within 100 meters
- Alert for fixed assets like power plant points and transmission GIS line segments
- Protect crews and other field staff with GPS follow-me alerting via phone app
- Near real-time lightning data with only a few seconds of latency
- Multiple custom perimeters and custom messaging for each
- Alert delivery via email, text message, push phone app notification, and/or automated phone call

Vortex: Near Real-time Lightning Data Mapping and Archive Data

- View near real-time and historical lightning data on StormGeo Vortex platform – a hosted software as a service web portal
- Color coded based on aging of data and auto-refreshing data views
- Export a .csv file to your device for a selected time and date range using the self-service export options in the real-time view and archive view
- View Filters: Lightning types, date/time, and maximum age
- View over your distribution, transmission, and generation assets in the Vortex portal
- Click on any strike for interactive data balloon with timestamp, coordinates, polarity, and amplitude





Advanced Lightning Modeling (ALM) for Dangerous Thunderstorm Alerting

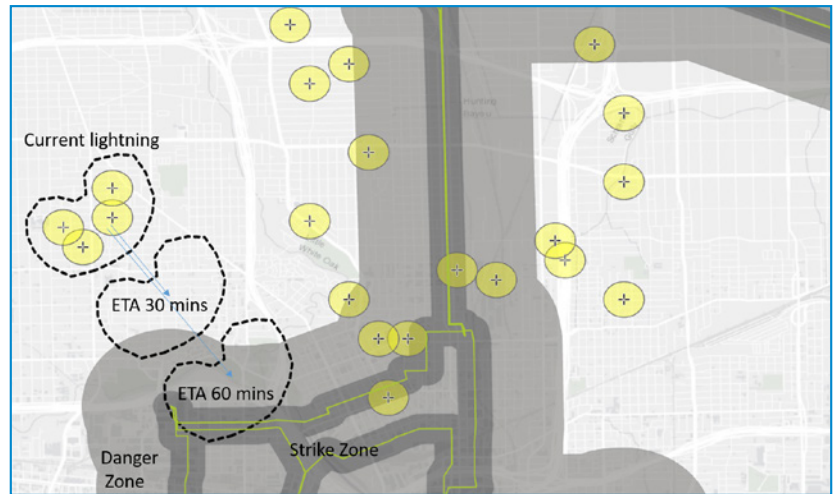
- ALM algorithm predicts where severe thunderstorms will track through your service territory with outage producing winds or even tornadoes
- Effective for pulsing, short-fused thunderstorms as well as severe thunderstorms with strong rotation occurring below radar coverage
- Increase alert lead times for tornadoes by up to 50% over NWS alerting with ALM, **a proven leading indicator**, instead of the traditional Doppler radar pixel rotation algorithm most organizations rely on, which only tells you what is happening now

Lightning Monitoring for Transmission Line Segments

Alerting and Event Records for:

- **Lightning Strike Alert:** Lightning within small buffer zone around asset. Can trigger inspection or limit the strikes that may have caused damage or an outage.
- **Lightning Danger Alert:** Stop all maintenance activities and head indoors
- **Lightning Safety ETA Alert:** A region of lightning is projected to arrive within your danger or strike zone.

All 3 are monitored to trigger all clear when danger has passed.



Contact us to receive more information about Lightning Solutions:

www.stormgeo.com | info@stormgeo.com