

The image shows the exterior of a restaurant named Margaret at night. The building features large glass windows and a curved entrance. Inside, a bar with various bottles and glasses is visible. Outside, there are several tables and chairs, some with potted plants. The text "MARGARET" is overlaid in large white letters, and "Events Packages 2026" is written below it in smaller white text.

MARGARET

Events Packages 2026

About Margaret

Margaret is named after Neil Perry's late mother, who was the matriarch of the family, the nurturer and carer, and the one who held everyone together.

Situated in Sydney's Double Bay, Margaret is where the best ingredients, the best wines, and the best craft come together to create a unique and lovely experience for our guests. At its heart, Margaret is a neighbourhood restaurant where people come together to experience the best produce in Australia.



Chef Neil Perry AM

Neil Perry AM is a veteran of the Australian restaurant industry and is one of Australia's leading and most influential chefs.

Neil's career in the hospitality industry spans four decades. He is founder of the Rockpool Group and creator of brands Rockpool, Rockpool Bar & Grill, Spice Temple, Rosetta, and Margaret. He has also recently opened the bar Next Door and partnered with Mike and Mia Russell to open Baker Bleu Sydney.

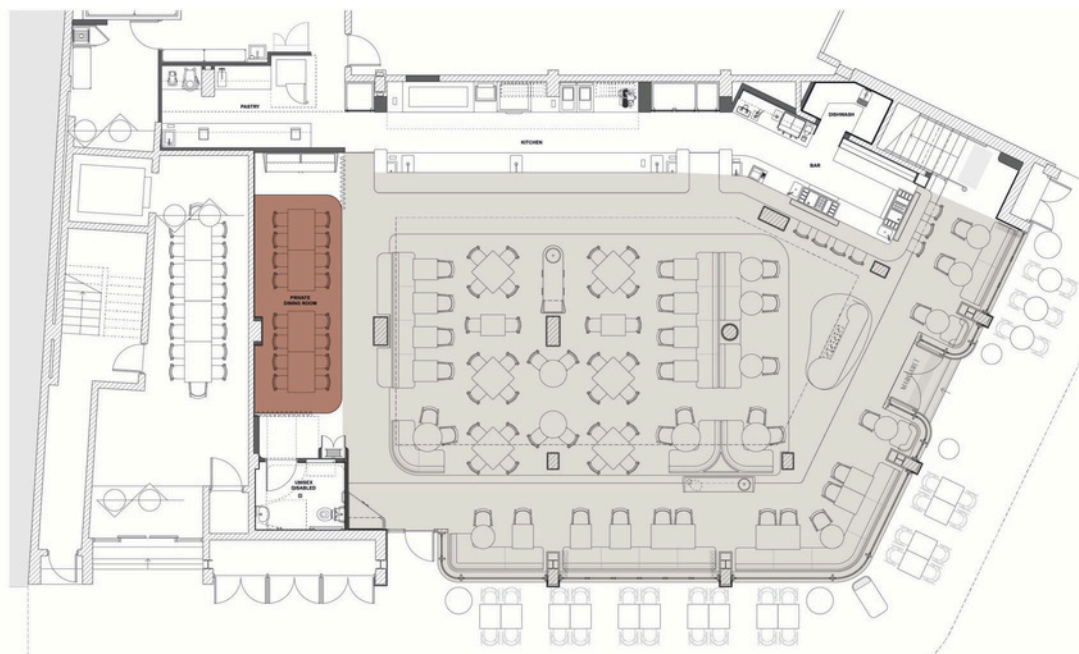
The restaurant Margaret is truly a family affair for Neil, with his wife Samantha, daughters Josephine, Macy and Indy deeply involved in its operations.



Private Events At Margaret

Margaret is a place that celebrates the joy of a great meal shared over good company. Whether it's weddings, birthdays, homecomings, or corporate events, our little corner of Double Bay serves as an ideal space to host your gatherings. Large or small, corporate or casual, our dedicated team will ensure you and your guests are well taken care of. Margaret is available for full venue hires, as well as semi-private event bookings.





Full Venue Hire

Margaret offers full venue hires for large gatherings of up to 100 guests. Ideal for corporate events, product launches, weddings, or larger-scale celebrations, our team is more than happy to help you put together your bespoke event. The space is available for exclusive bookings for either lunch or dinner service from Monday to Thursday.

Capacity:	100 pax
Lunch	12pm - 3pm
Dinner	6pm - Late

Semi-Private Dining

Tucked into a corner of Margaret is our charming semi-private dining area. The semi-private space features a long table comfortably seating up to 18 guests, artwork by Sydney-based artists Gabrielle Penfold and Petrina Tinsley, and offers retractable curtains to provide privacy, as preferred.

Capacity:	18 pax
Lunch	12pm - 3pm (Thu - Sun)
Dinner	6pm - Late (Wed - Sun)

Pricing Structure

Full Venue Hire

Minimum Spend:

To Be Advised

Semi-Private Dining

Minimum Spend:

\$3,200 +10% service charge





Contact

info@margaretdoublebay.com
02 9068 8888
margaretdoublebay.com.au
@margaretdoublebay
30-36 Bay St. Corner Guilfoyle Ave.
Double Bay, Sydney