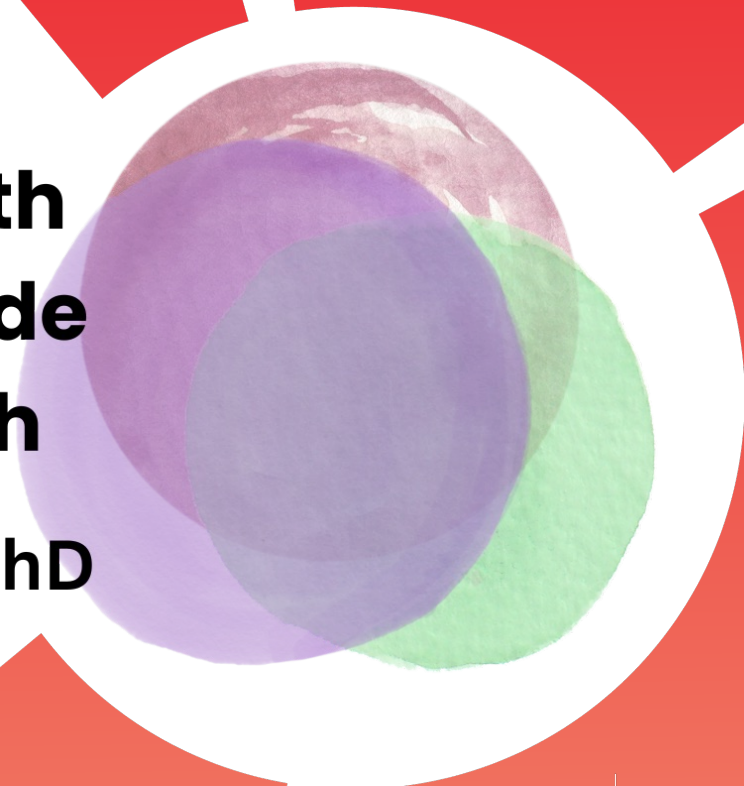


A Path Towards Youth Partnerships in Suicide Prevention Research

By: Marisa Marraccini, PhD



June 13, 2024

Research
Connection 

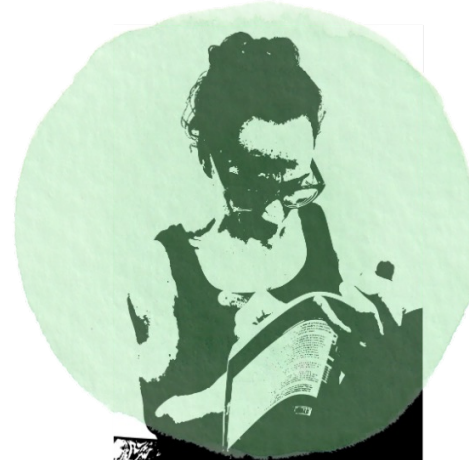


American
Foundation
for Suicide
Prevention

What does it feel like to go back to school?

What types of information should be shared
to improve this transition?

What supports do youth need when coming back to schools?



How do parents and legal guardians navigate this transition?

School Reintegration

Research
Connection 



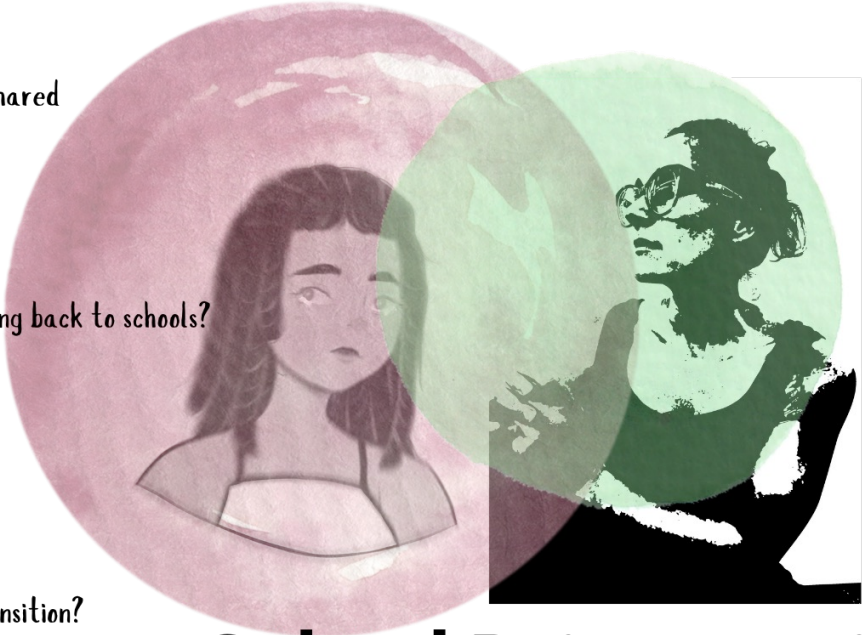
American
Foundation
for Suicide
Prevention

What does it feel like to go back to school?

What types of information should be shared to improve this transition?

What supports do you need when coming back to schools?

How do you navigate this transition?



School Reintegration

Research Connection 



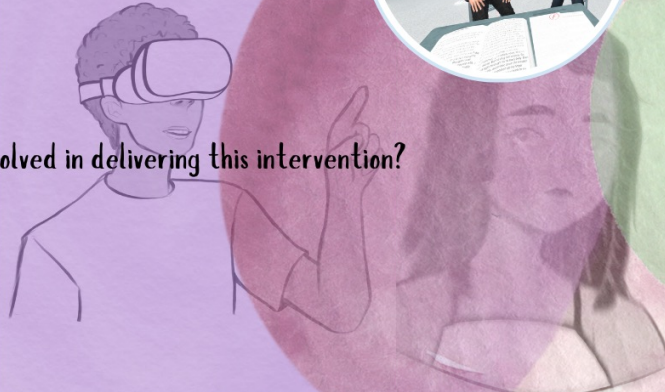
American Foundation for Suicide Prevention

How can this idea help your transition back to school?

What types of experiences and skills should it address?



Who should be involved in delivering this intervention?



Who won't this work for? What can we do to make it work for them?



School Reintegration: Intervention

Leveraging Principles of Co-Design

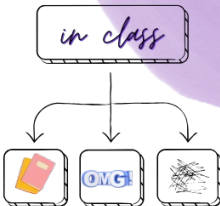
PLAY TESTING

MIND-MAPPING

CARD SORTING

THINK ALOUDS

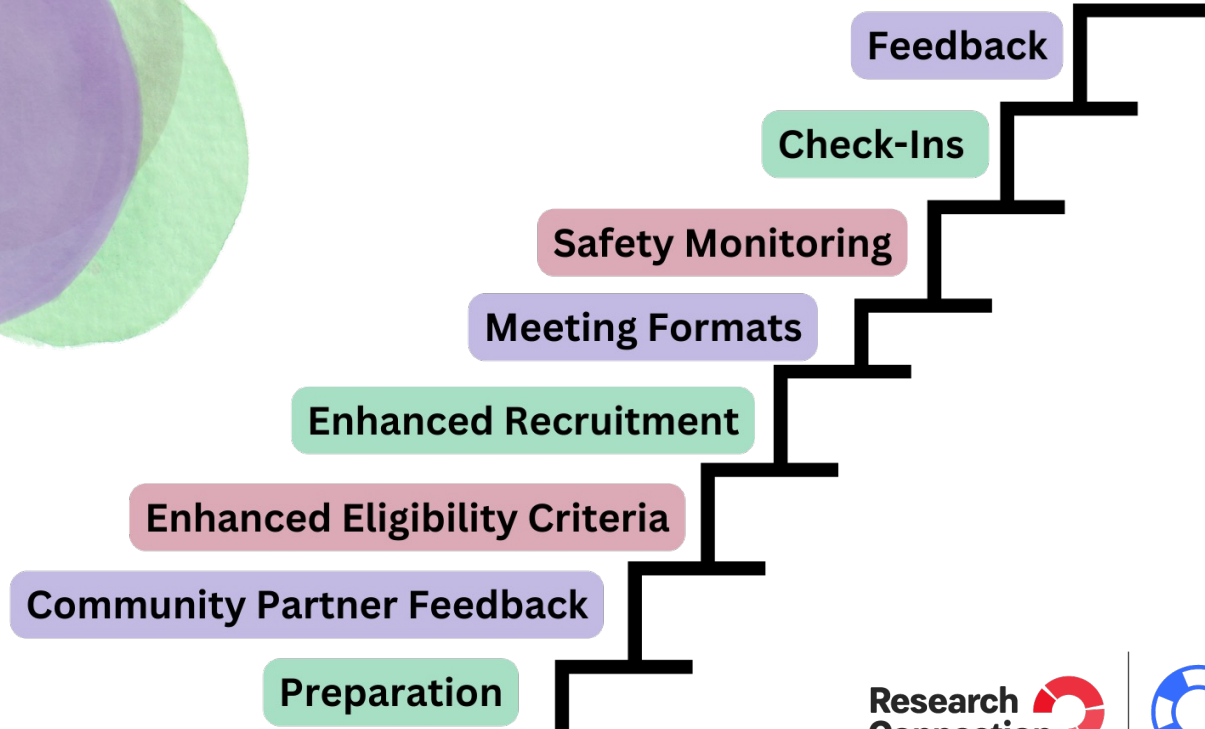
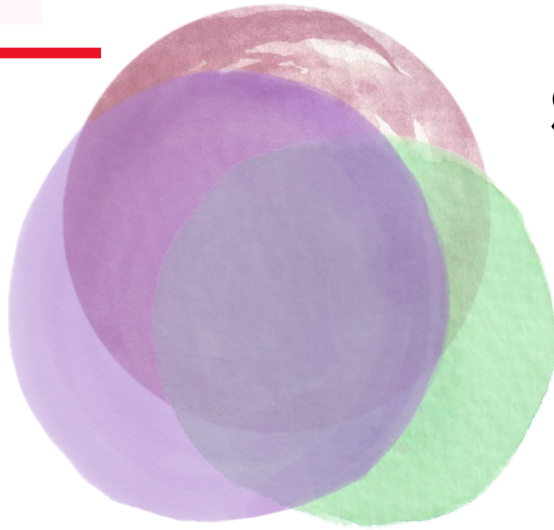
STORY BOARDS



School Reintegration: Intervention



Steps towards Safe Co-Design



Thank you

Marisa Marraccini, PhD
mmarracc@unc.edu

Research
Connection 



American
Foundation
for Suicide
Prevention



@afspnational

