



CREATING METAL ARTISTS

CO<sub>2</sub>/MAG

# ***XD350SII/500SII***

## ***Digital DYNA AUTO CO<sub>2</sub>/MAG Welding Machine***

NEW

- More Efficient
- More Superior Function
- More Convenient
- More Reliable
- More Safe and Save



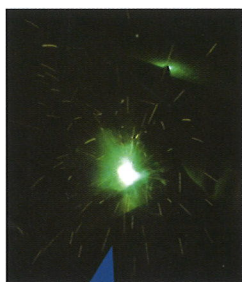


# OTC changes because of you.

For the diverse needs of users a new generation CO<sub>2</sub> / M

## More Efficiency

- ◆ Adaptation to high performance micro computer control, realize Variety of arc characteristic through the change of software program. further satisfies user's diverse need of arc characteristic.  
A wide range of welding condition adjustment.  
Good welding performance at high speed welding.  
Significantly reduces spatter generation.  
Upgrade CPU 8 bit to 16 bit



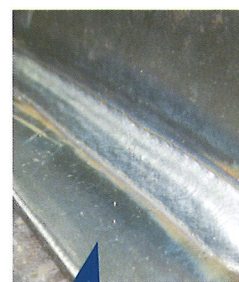
Conventional Machine



XD500S Small Spatter



Conventional Machine



XD500SII (S-2)

Welding Current : 200A  
Welding Voltage : 19V

Welding Current : 200A  
Welding Voltage : 19V

## More Superior Function

- ◆ Realization of welding current limit setting by change of software program, guarantees welding quality. (Option)

Example :

Wire size 1.2 / 1.4mm, even setting welding current above 300 ampere, but actual current is limited within 300 ampere.

Remote Box setting: 350 Ampere

Condition: CO<sub>2</sub> welding wire size 1.2mm Voltage: One Knob Control applied Wire extension: 15mm

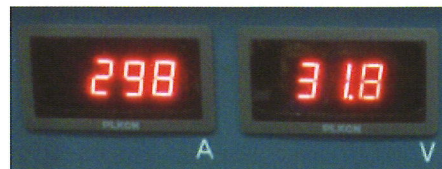
Standard



Actual Welding Current outputs as Pre-set value.



Current Limit (S101 8 Function On)



Actual Welding Current is limited within 300 Ampere

- ◆ The combination of new digital Micro Processor and OTC Unique waveform technology realize more Smooth arc start and more stable arc in welding especially outstanding at low current range.
- ◆ At low current range, arc follows the welding direction closely, which improves welding performance for all welding position.
- ◆ Stable arc at high speed welding, with minimized spatter generation, that shortened cycle time of each work piece being processed.



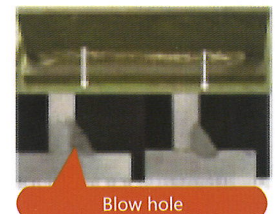
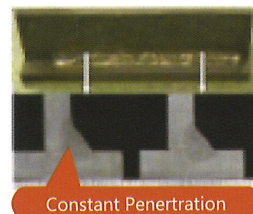
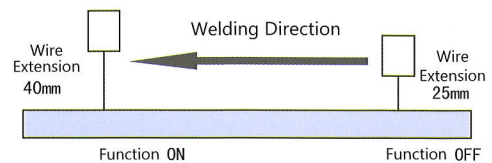
Vertical Welding Standardized



# AG welding machine is launched XD350SII/XD500SII

## More Convenient

- ◆ OTC unique Penetration Control function. That keeps the depth of penetration at a constant level even when tip-to-work distance varies.
- ◆ LED Display of current and voltage digital meter, more visible and easier to adjust.
- ◆ One Knob Function, welding becomes easy.



## More Reliable

- ◆ Feeder and Remote 2 in 1, significantly reduced chances of cable faulty.
- ◆ Easily adjust welding condition and fine tune with wire feeder next to you.
- ◆ Enable stable arc when long interconnection cables applied.
- ◆ More durable and tough .
- ◆ New light-weight wire feeder delivers more mobility for users. (Option)



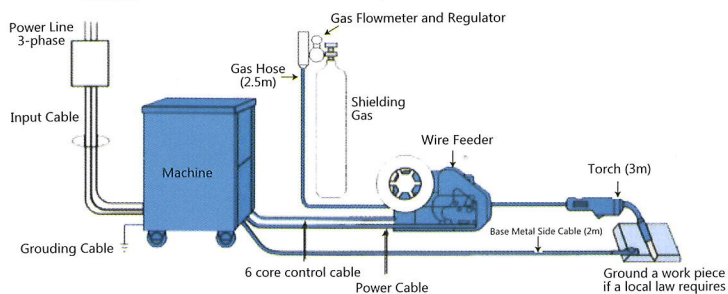
## More safety and human friendly design

- ◆ Gas saving function automatically stops gas flow out after gas check period over 2 minutes. Besides saving gas, it also protects user from checking accident at narrow workin area due to excessive co2 gas flow out.
- ◆ Safety Operating Function  
In case machine is turned on while welding touch switched on machine will not start.  
When use very long extension cable, welding torch is far from welder's sight, by this function prevents injury of accidental wire burning.
- ◆ Chang of louver shape prevents dust, water and spatter from coming into the machine.
- ◆ Save electricity, save energy, and environmental friendly.
- ◆ Many protection functions and useful functions.



## Connection Diagram

This color reflects standard composition



- Input power capacity and Cable Specifications.

Model name	Type	XD350SII	XD500SII
Phase		3 Phase	
Input Power Capacity	kVA	18.0 more than	31.5 more than
Fuse / Breaker Capacity	220 V	63	100
	380 V	40	63
	415 V	40	63
Input Side Cable Grounding Cable	220 V	6	14
	380 V	6	14
	415 V	6	14
Base Metal / Feeder Power Cable	mm2	35	70

## Specification and Standard Accessories

Package Name		XD350SⅡ	XD500SⅡ
Power Source	Model	CPXDS-350Ⅱ	CPXDS-500SⅡ
Specifications			
Rated Input Voltage	V	3 Phase , 380±10%, 50/60Hz	
Rated Input Power	kVA	18.0kVA(16.0kW)	31.5kVA(28.0kW)
Rated Input Current	A	27.4A(380V)	47.9
Rated Output Current	A	350	500
Rated Duty Cycle	%	50	60
Rated Output Current	A	50-350	50-500
Rated Input Voltage	V	15-36	15-45
Rated Load Voltage	V	36	45
Rated Open Circuit Voltage	V	55	64
Dimension	mm	362x627x723	424x680x788
Protection Class	~	IP21S	
Weight	kg	121	172kg(380V)
Wire Feeder	Model	CM-8202	
Specification			
Wire Diameter	mm	0.9, 1.0, 1.2, (1.4), (1.6)	
Feeding Speed	m/min	2~22	
Weight	kg	11.5 kg	
Dimension	mm	200x483x292 / 214x500x360	
Remote Box	—	Attached to Wire Feeder / C0178K00 (350 Type) C0288K00 (500 Type)	
Welding Torch	Model	WT3510-SD / WT5000-SD	
Specification			
Rated Welding Current	A	350	500
Rated Duty Cycle	%	60	60
Wire Diameter	mm	(0.9)、(1.0)、1.2、(1.4)	1.2、(1.4)、(1.6)
Cooling Method	~	Air cool	
Cable Length	m	3、(4.5)、(6)	
Rated Gas Flow	L/min	25	
Welding Cable	Model	BKPT-5002	BKPT-7002
Cable Length	m	2	2
Cable Diameter	mm <sup>2</sup>	50	70

Remark : By switching power supply's PCB setting switch, enables using with CMXL-2302 model wire feeder. For setting method, refer to owner's manual.  
In case using a wire diameter indicated in the bracket ( ), it is necessary to purchase the optional accessories according to the wire diameter chose.  
Such as feed roll, contact tip, and etc.

## Options

### Extending Length of Cable and Hose

Item	5m	10m	15m	20m
Welding Cable	BKPT-5007	BKPT-5012	BKPT-5017	BKTP-5022
	BKPT-7007	BKPT-7012	BKPT-7017	BKTP-7022
Control Cable	BKCPJ-0605	BKCPJ-0610	BKCPJ-0615	BKCPJ-0620
Gas Hose	BKGG-0605	BKGG-0610	BKGG-0615	BKGG-0620

Remark : When choosing extension cable, no need the standard cable that comes with the machine (2 meter). When choosing extension cable length over 20 meter, please consult OTC or OTC agent. If welding current using near to rated current range, it is recommended to use a thicker cable.



# OTC DAIHEN Asia Co., Ltd.

**Head Office & Factory** 60/86 Mu 19, Navanakorn Industrial Estate Phase3, Klong Nueng, Klong Luang, Pathumthani 12120, Thailand.  
TEL : (+66) 2529-2130-1, (+66) 2529-3335-7 FAX : (+66) 2529-2132 E-mail : [otcda@otc.co.th](mailto:otcda@otc.co.th)  
<http://www.otcdaihenasia.com>

**Bangkok Sales Office** 23/43, Fl.16th Sorachai Bldg., 23 Soi Sukhumvit 63, Klongtonnua, Wattana, Bangkok 10110 Thailand.  
TEL : (+66) 2714-3201(Auto 5 Lines) FAX : (+66) 2714-3204

**Rayong (Eastern Seaboard) FA Center** 500/141 Hemaraj Eastern Seaboard Industrial Estates, Moo 3, Tambol Tasit, Amphur Pluakdaeng, Rayong 21140, Thailand.  
TEL : (+66) 38 964-182 FAX : (+66) 38 964-183

**Malaysia Representative Office / OTC DAIHEN INDIA PVT.LTD / PT.OTC DAIHEN INDONESIA**