

Servo Tip Dresser CD-SVR



Feature

1. Adopt one touch holder which does not require any tool.
2. Simultaneous dressing the upper and lower electrodes enables to reduce dressing time and be always alignment of the face after dress.
3. The Function of the servomotor allows the control of the revolution frequency and the detection of the electric current.
4. Multi-functional gearbox for accepting any maker's servomotor.

※ Customers should prepare the motor.

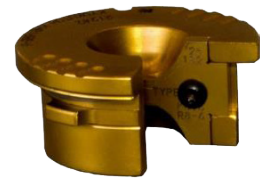
Installation



Before placement



After placement

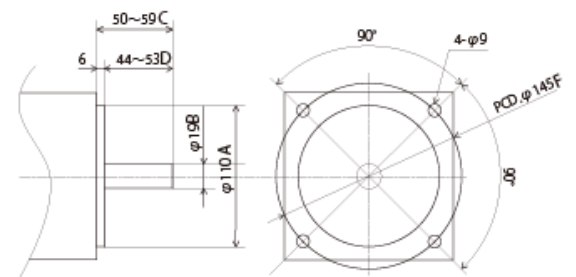


One touch holder

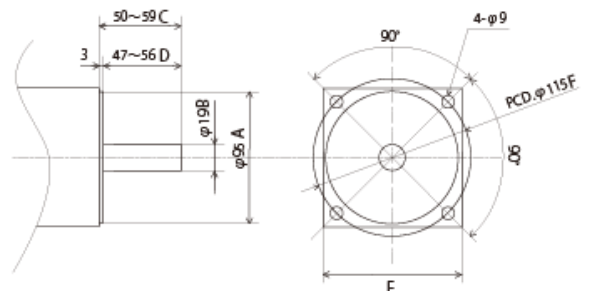
Specification

	Indication in DWG	
Revolution(rpm)		1500~2000 in practical use
Rated torque(N)		More than 5.6
Flange diameter(mm)	A	φ95 or φ110
Shaft diameter(mm)	B	φ19
Shaft length from flange(mm)	C	More than 50, less than 59 from flange
Effective shaft length(mm)	D	Shaft with 44mm straight area
Capacity outer diameter(mm)	E	□135
Mounting pitch(mm)	F	P.C.D145 or P.C.D115
Mounting screw(mm)		4×M8
Floating stroke(mm)		Max.40
Weight(kg)		5.9

Typical mounting dimensions 1



Typical mounting dimensions 2



※ Specification and design are to be changed without notice for improvement.