

Cap Tip Monitoring System

TMN-01

Joint Development with KEYLEX Co Ltd.,



Feature

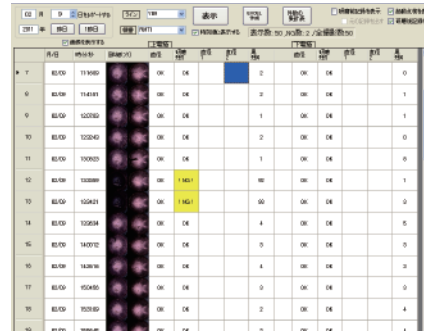
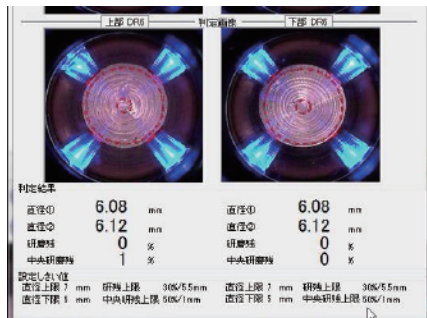
1. Picture management by camera photography.
2. Cap tip images are analyzed and distinguished by photo data.
3. Analyzed data enable traceability.
4. Compact design for narrow manufacturing line.
5. One-touch attachment bracket(Optional).
6. 15 units of tip monitor can be connected per each computer.
7. Device network or CC link are used for control regulation.
8. Possible attach shutter to protect the lens from dirt and etc(Optional).

【Accessories】 : Software

※ Necessary equipment

PC、PoE hub、I/F board for Device network/CC link、LAN cable

Software Picture



Specification

Power	48V(Supply from PoE hub)
Consumed power	120mA以下 ※Correspond to TYPE A、TYPE B for POE hub
IP address	Network transmission setting with software
Operation temperature	Within 0~40° environment
Operation humidity	Less than 90%(No bedewing)
Weight(g)	780

Option

Shutter image



※ Specification and design are to be changed without notice for improvement.
※ Movie is available on Kyokutoh web page.