

Spot Welding Cap Tip Sensor *FIXA2*



Feature

1. Able to avoid poor weld through regular detecting operation of tip face.
2. The sensor reckon good tip face by proper reflecting light amount of cap tip.
3. Tip face is identified either OK or NG by the signal of Tip manager.
4. Possible attach shutter to protect the head from dirt and etc(Optional).

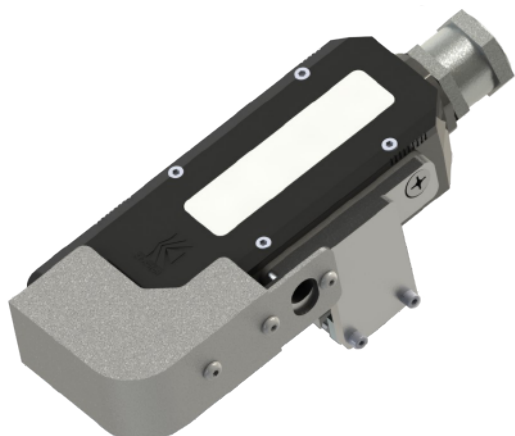
Specification

Power(DC)		12~24V
Power consumption		Under 3W
Control output	Open collector	Under DC24V
	Output max	100mA
Airpressure(MPa)		0.4~0.6
Environmental Resistance	Operating ambient luminance	Incandescent lamp : 20,000 lx Sunlight : 30,000 lx
	Operating ambient temperature	0~40°C(no freezing)
	Operating ambient humidity	35~75%RH(no condensation)

※ This product is a precision instrument, please protect the product from water, spatter and dust.

Option

Shutter image



※ Specification and design are to be changed without notice for improvement.
※ Movie is available on Kyokutoh web page.