

# CRE TYPE CABLE REEL

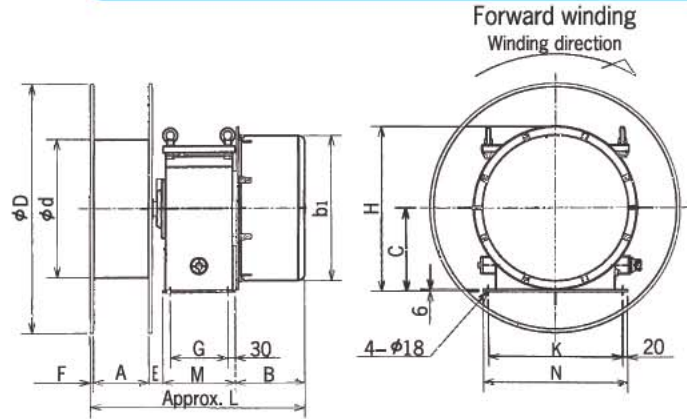
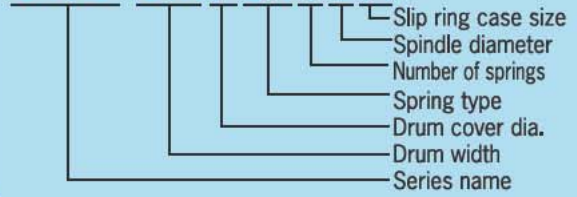
(Long stroke)

- Protective structure ..... IP45
- Spring replacement ..... Cartridge type



## Model description

CRE-6M754T1A



## Specifications and Dimensions

Model	Max Torque N·m(kgf·m)	Max spring tension N(kgf)	Max spring turns n	Dimensions (mm)														Mass (kg)
				D	d	A	b <sub>1</sub>	F	E	K±1	N	C	H	B	L	G±1	M	
CRE-6M754T1A	52.9( 5.4)	239(24.4)	45	750	442	170	440	12	55	535	575	335	657	235	762	230	290	176
CRE-6M754T1B															842	310	370	183
CRE-6M754T1C															942	410	470	193
CRE-6M754F1A	52.9( 5.4)	239(24.4)	60	750	442	170	440	12	55	535	575	335	657	295	822	230	290	196
CRE-6M754F1B															902	310	370	204
CRE-6M754F1C															1002	410	470	214
CRE-6M854F1A	52.9( 5.4)	239(24.4)	60	870	442	170	440	12	55	535	575	335	657	295	822	230	290	201
CRE-6M854F1B															902	310	370	209
CRE-6M854F1C															1002	410	470	219
CRE-6M854V1A	52.9( 5.4)	239(24.4)	75	870	442	170	440	12	55	535	575	335	657	355	882	230	290	222
CRE-6M854V1B															962	310	370	230
CRE-6M854V1C															1062	410	470	240
CRE-7M980W1A	78.4( 8.0)	284(29.0)	40	1000	552	170	580	12	55	535	575	335	660	210	737	230	290	236
CRE-7M980W1B															817	310	370	243
CRE-7M980W1C															917	410	470	253
CRE-7M980T1A	78.4( 8.0)	284(29.0)	60	1000	552	170	580	12	55	535	575	335	660	280	807	230	290	283
CRE-7M980T1B															887	310	370	290
CRE-7M980T1C															987	410	470	300
CRE-7880W1A	78.4( 8.0)	284(29.0)	40	870	552	220	580	12	55	535	575	335	660	210	787	230	290	230
CRE-7880W1B															867	310	370	238
CRE-7880W1C															967	410	470	248
CRE-7980W1A	78.4( 8.0)	284(29.0)	40	1000	552	220	580	12	55	535	575	335	660	210	787	230	290	237
CRE-7980W1B															867	310	370	245
CRE-7980W1C															967	410	470	255
CRE-7980T1A	78.4( 8.0)	284(29.0)	60	1000	552	220	580	12	55	535	575	335	660	280	857	230	290	284
CRE-7980T1B															937	310	370	292
CRE-7980T1C															1037	410	470	302
CRE-71080T1A	78.4( 8.0)	284(29.0)	60	1200	552	220	580	30	55	535	575	335	660	280	875	230	290	282
CRE-71080T1B															955	310	370	289
CRE-71080T1C															1055	410	470	299
CRE-8M10130T2B	127.0(13.0)	362(37.0)	45	1200	700	220	580	30	69	535	575	335	660	280	969	310	370	292
CRE-8M10130T2D										680	720		742					307
CRE-8M11130F2B	127.0(13.0)	362(37.0)	60	1400	700	220	580	30	69	535	575	335	660	350	1039	310	370	340
CRE-8M11130F2D										680	720		742					355
CRE-810130F2D	127.0(13.0)	362(37.0)	60	1200	700	275	580	30	69	680	720	335	742	350	1094	310	370	353
CRE-810260W2D	254.0(26.0)	725(74.0)	30	1200	700	275	580	30	69	680	720	335	742	350	1094	310	370	353
CRE-811260W2D	254.0(26.0)	725(74.0)	30	1400	700	275	580	30	69	680	720	335	742	350	1094	310	370	359

NOTE: The spindle diameter 1 is for drum width 6M~7, and the spindle diameter 2 is for drum size.

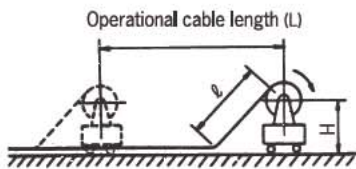


## Slip ring capacity (Rated voltage AC600V)

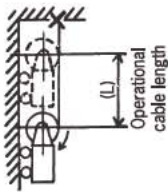
Rated current	Number of poles					
Slip ring case	1A	1B	1C	2B	2C	2D
20A	3~12	14~20	22~30	3~20	22~30	—
50A	3~6	8~10	12~20	3~10	12~20	—
100A	3·4	6~8	—	3~8	—	—
150A	—	3·4	—	3·4	—	—
200A	—	—	—	—	—	3·4

NOTE: 1.The ring case varies in size depending on rated current and the number of poles. Please see the suffix of the model to refer to dimensions.  
2.Number of poles not listed above could be customized upon request.

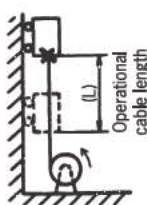
Horizontal retrieve



Vertical retrieve



Vertical retrieve



Operational cable length (L) Cable size	CRE TYPE Mobile application /Vertical & horizontal retrieve, Stationary application /Vertical retrieve				
	40m	50m	60m	70m	80m
8mm <sup>2</sup> ×3C φ 17.0 0.525kg/m	6M754T	6M754F	6M754F	6M854V	6M854V
8mm <sup>2</sup> ×4C φ 18.5 0.655kg/m	6M754T	6M754F	6M754F	6M854V	6M854V
2mm <sup>2</sup> ×10C φ 19.5 0.515kg/m	6M754T	6M754F	6M754F	6M854V	6M854V
14mm <sup>2</sup> ×3C φ 20.0 0.795kg/m	6M754T	6M754F	6M754F	6M854V	6M854V
14mm <sup>2</sup> ×4C φ 22.0 1.0kg/m	6M754T	6M854F	6M854F	6M854V	7M980T
5.5mm <sup>2</sup> ×8C φ 24.0 1.0kg/m	6M854F	6M854F	6M854F	7M980T	7980T
22mm <sup>2</sup> ×3C φ 27.0 1.33kg/m	6M854F	7M980W	7M980T	7980T	71080T
22mm <sup>2</sup> ×4C φ 29.0 1.67kg/m	7980W	7980W	7980T	71080T	71080T
38mm <sup>2</sup> ×3C φ 32.0 2.02kg/m	8M10130T	8M10130T	8M11130F	8M11130F	
38mm <sup>2</sup> ×4C φ 35.0 2.55kg/m	8M10130T	8M10130T	8M11130F	8M11130F	
60mm <sup>2</sup> ×3C φ 39.0 3.15kg/m	8M10130T	810130F			
60mm <sup>2</sup> ×4C φ 44.0 4.02kg/m	810260W				
80mm <sup>2</sup> ×3C φ 46.0 4.32kg/m	811260W				

NOTE: 1.Calculated at following conditions:

- ①Cable type 2PNCT ②Applications Mobile application /Vertical, horizontal retrieve, Stationary application /Vertical retrieve
- ③Max travel/lift speed less than 40mm/min ④Installation height less than 1.0m
- 2.Deviations due to roller guide, non-straight cable payout, low ambient temperature, etc. are not calculated. When selecting a model, please take into consideration of high mechanical stress and harsh environment conditions.
- 3.The chart is not applicable to two-way payout. When selecting two-way payout, please take into consideration of extra reel torque.
- 4.For high speed or high operation frequency rate, please use premium cables.
- 5.Suffix -R on all model names identifies reverse winding.
- 6.For any special requirements, please contact us.

## Accessories (applied to CRE TYPE)

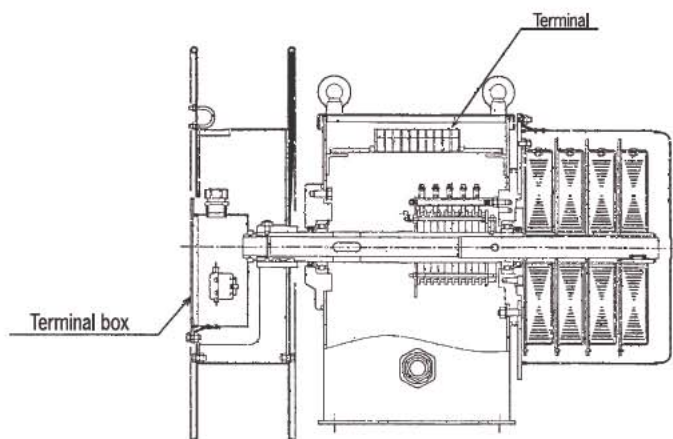


Chart of terminal box type and number of conductors

Drum width	Drum dia. (mm)	Cable size and max number of conductors						
		2mm <sup>2</sup>	5.5mm <sup>2</sup>	14mm <sup>2</sup>	22mm <sup>2</sup>	38mm <sup>2</sup>	60mm <sup>2</sup>	80mm <sup>2</sup>
6M	φ 442	14	12	6	4	—	—	—
7M.7	φ 552	22	20	12	6	4	—	—
8M.8	φ 700	30	28	20	8	4	4	4