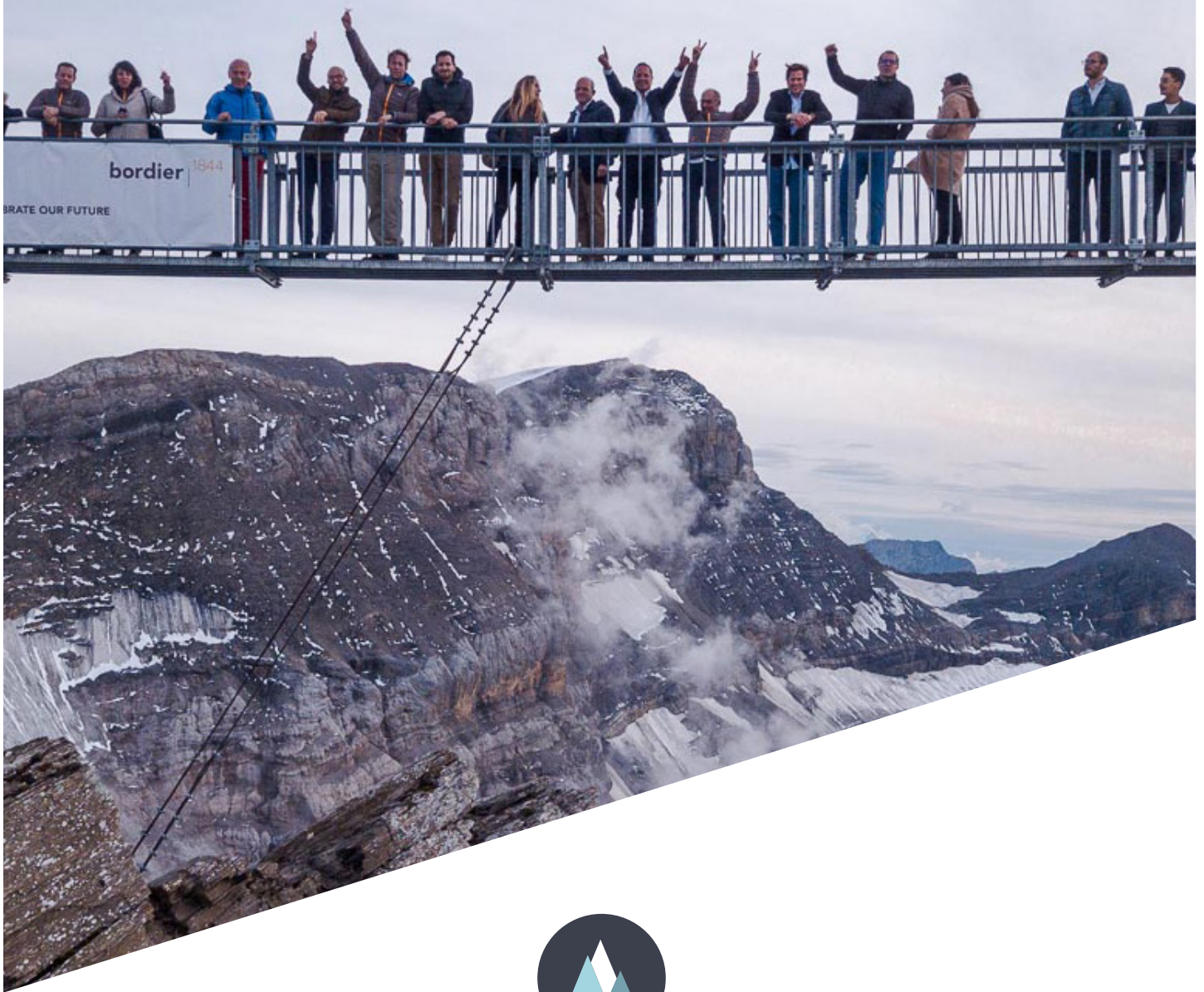


# MEETINGS, INCENTIVES, CONFERENCES & EVENTS



**GLACIER 3000**

*High level experience.*

[www.glacier3000.ch](http://www.glacier3000.ch)

**GLACIER 3000**

Col du Pillon

 | 1865 Les Diablerets

+41 (0) 24 492 09 23

[booking@glacier3000.ch](mailto:booking@glacier3000.ch)

[www.glacier3000.ch](http://www.glacier3000.ch)



# GLACIER 3000

## Scex Rouge at 3000 M.

Nestled in the heart of the Swiss Alps, Glacier 3000 offers modern, fully equipped spaces for corporate events, seminars, and incentive trips. Inspire your teams in a breathtaking setting while enjoying unique team-building activities designed to foster collaboration and creativity. With panoramic alpine views, tailored catering options, and seamless event planning services, Glacier 3000 is the perfect choice for unforgettable MICE experiences.



# VILLAGE LES DIABLERETS

## The Glacier Hotel, Hotel Les Sources & Congress Center

Host corporate retreats or events for up to 250 guests in refined restaurants and fully equipped seminar spaces. Enjoy gourmet menus, a curated wine list, and a welcoming ambiance for business lunches, gala dinners, or networking, with a sunny terrace and bar for summer relaxation. Our modern, flexible seminar rooms provide a tranquil mountain setting to boost creativity and productivity, with tailored coffee breaks, business meals, and gala options to enhance every moment. For multi-day events, our convenient half-board package ensures a seamless stay. Let us craft your perfect MICE experience!



# GLACIER 3000

Scex Rouge at 3000 M.

## Restaurant Botta - 4<sup>th</sup> floor

Surface	Conference	Theater	Banquet
125 m <sup>2</sup>	180 pax.	120 pax.	180 pax.



## Botta Est & West rooms - 4<sup>th</sup> floor

Surface	Conference	Theater	Banquet
35 m <sup>2</sup>	-	28 pax.	30 pax.



## Restaurant Le 3 - 3<sup>rd</sup> floor

Surface	Conference	Theater	Banquet
250 m <sup>2</sup>	220 pax.	120 pax.	220 pax.



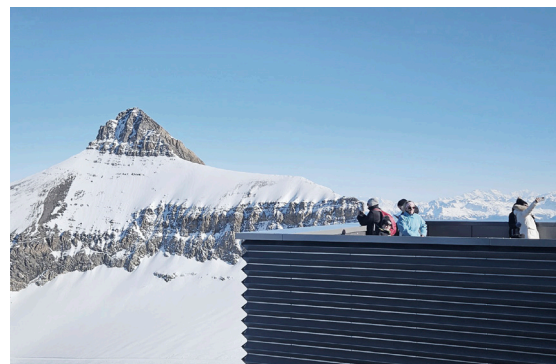


# GLACIER 3000

Scex Rouge at 3000 M.

## Botta Rooftop East & West - 5<sup>th</sup> floor

Surface	Conference	Cocktail	Banquet
35 m <sup>2</sup>	-	50 pax.	-



## Botta Rooftop - 5<sup>th</sup> floor

Surface	Conference	Cocktail	Banquet
125 m <sup>2</sup>	-	100 pax.	-



## Carnotzet + Terrace of 100 m<sup>2</sup>

Surface	Conference	Dancefloor	Banquet
115 m <sup>2</sup>	70 pax.	70 pax.	70 pax.



# GLACIER 3000

Pillon valley station

## Restaurant Pillon

Surface	Conference	Cocktail	Banquet
150 m <sup>2</sup>	-	80 pax.	80 pax.



## Pillon Terrace

Surface	Conference	Cocktail	Banquet
125 m <sup>2</sup>	-	70 pax.	-



## Stübli Room

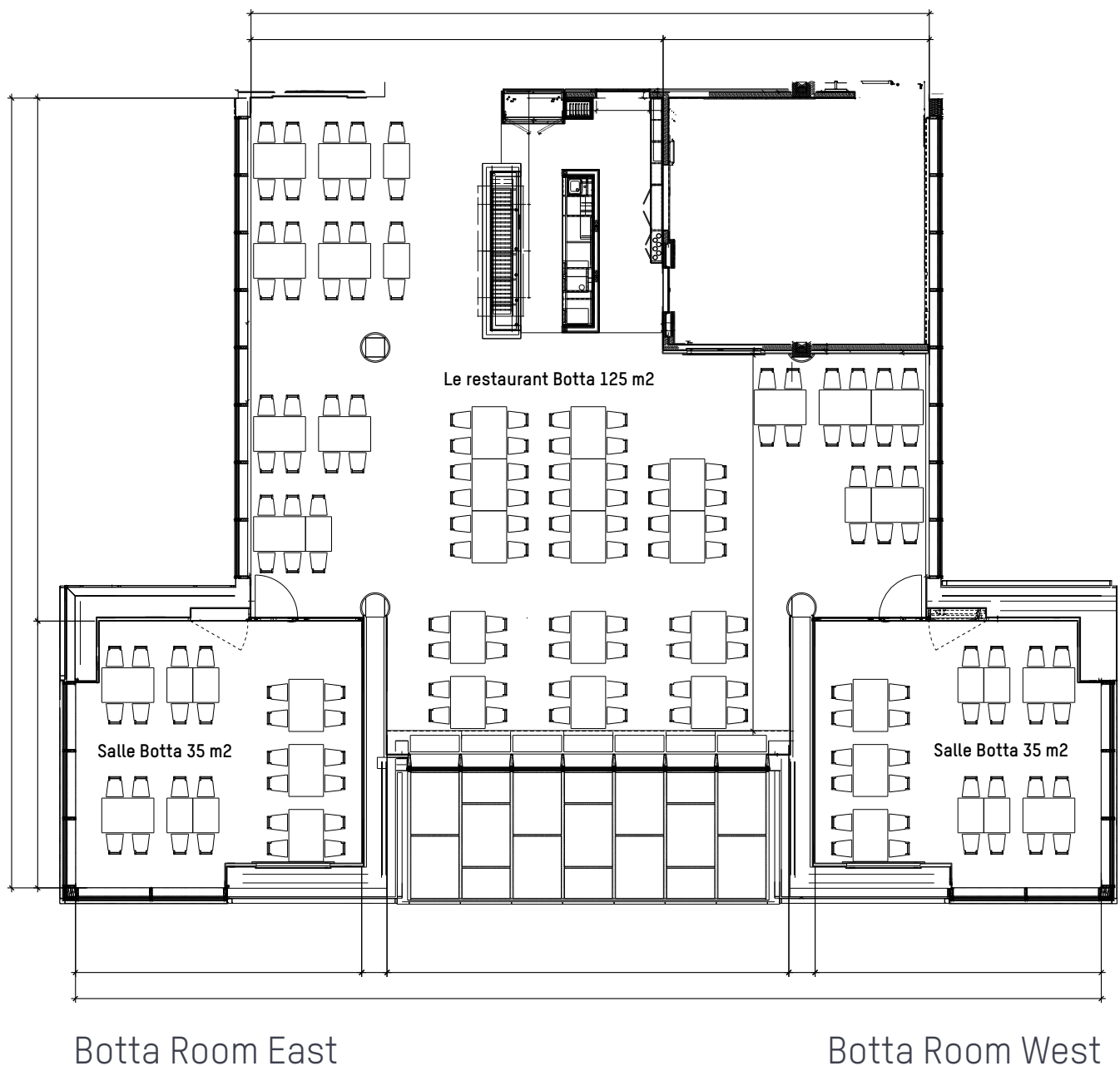
Surface	Conference	Cocktail	Banquet
18 m <sup>2</sup>	-	10 pax.	10 pax.



# GLACIER 3000

Plan Scex Rouge at 3000 M.

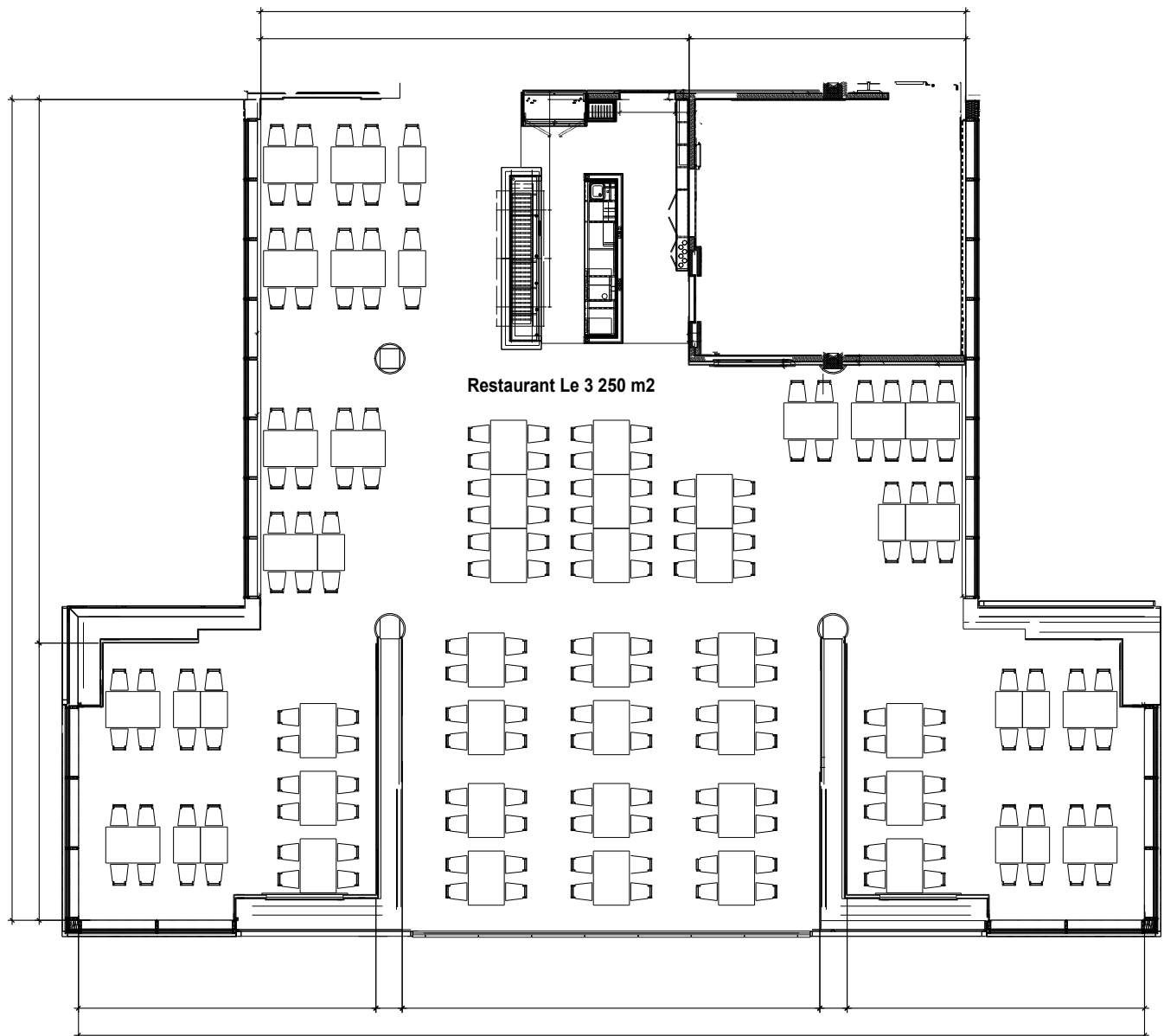
## RESTAURANT BOTTA



# GLACIER 3000

Plan Scex Rouge at 3000 M.

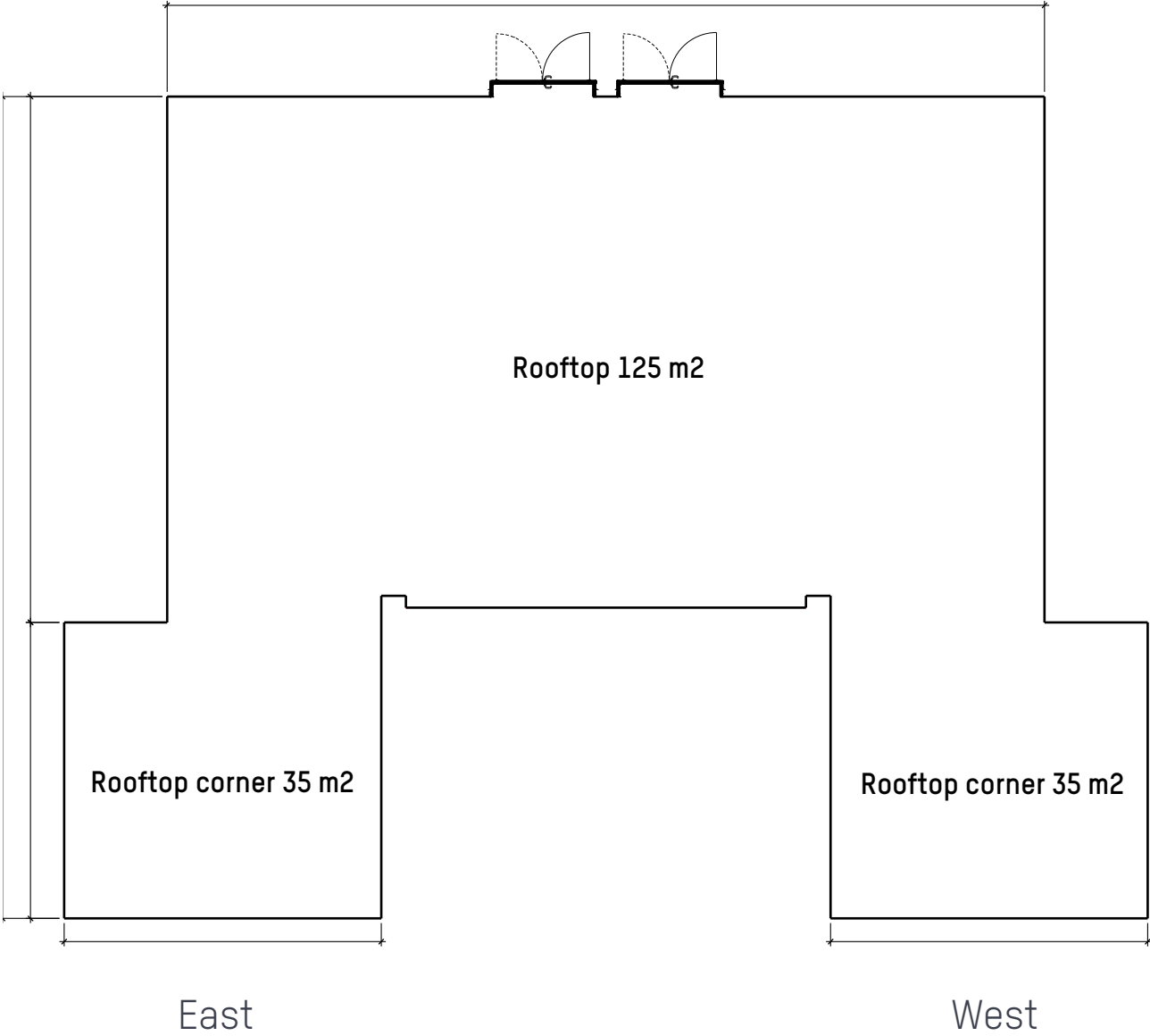
## RESTAURANT LE 3



# GLACIER 3000

Plan Scex Rouge at 3000 M.

## ROOFTOP TERRACE BOTTA

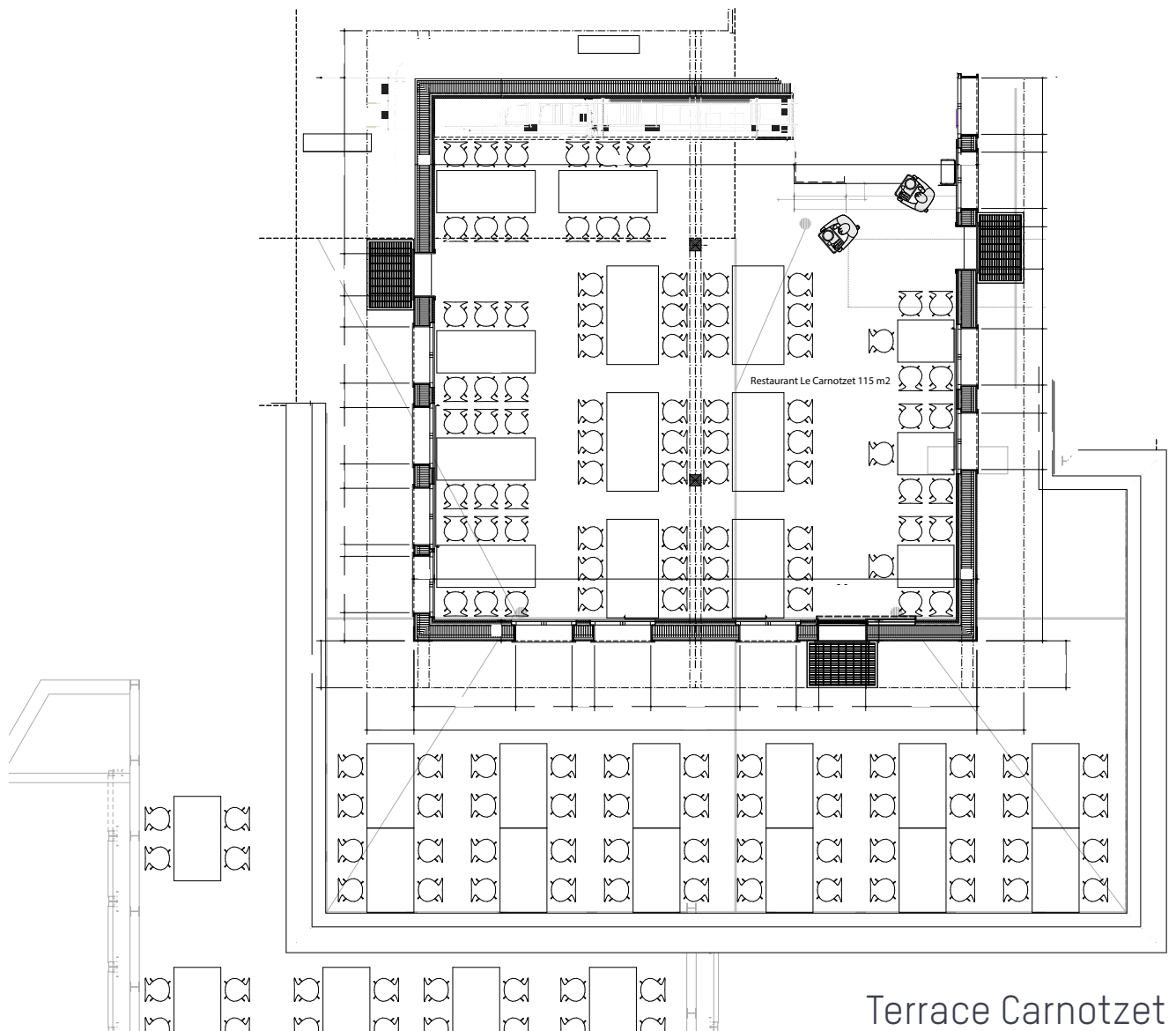




# GLACIER 3000

Plan Scex Rouge at 3000 M.

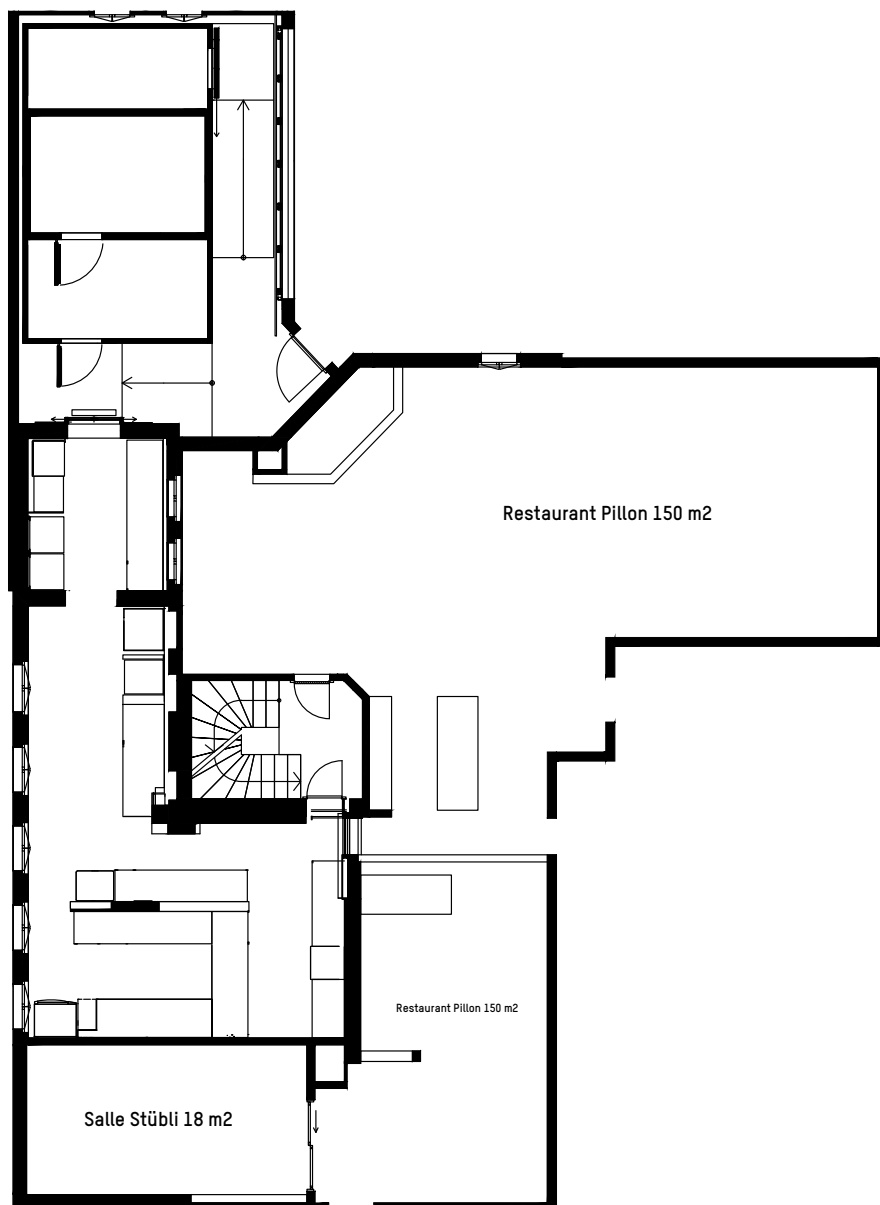
## RESTAURANT CARNOTZET



# GLACIER 3000

Plan Pillon valley station

## RESTAURANT PILLON



Stübli room



# GLACIER 3000

*High level experience.*

## Contact



    @glacier3000.ch

 +41 (0) 24 492 09 23

booking@glacier3000.ch