

Insurance & Employee Benefits For International Schools





At Hoxton Wealth, we understand the vital role schools play in shaping communities—and the unique risks they face in doing so. That's why we provide award-winning, cost-effective insurance and employee benefits solutions tailored specifically to the needs of international schools across Asia.

Our specialist teams offer deep expertise in structuring customised insurance portfolios for schools of all types and sizes. As an independent broker, we have access to a wide range of globally recognised providers, enabling us to secure high-quality coverage, negotiate favourable terms, and manage costs effectively.

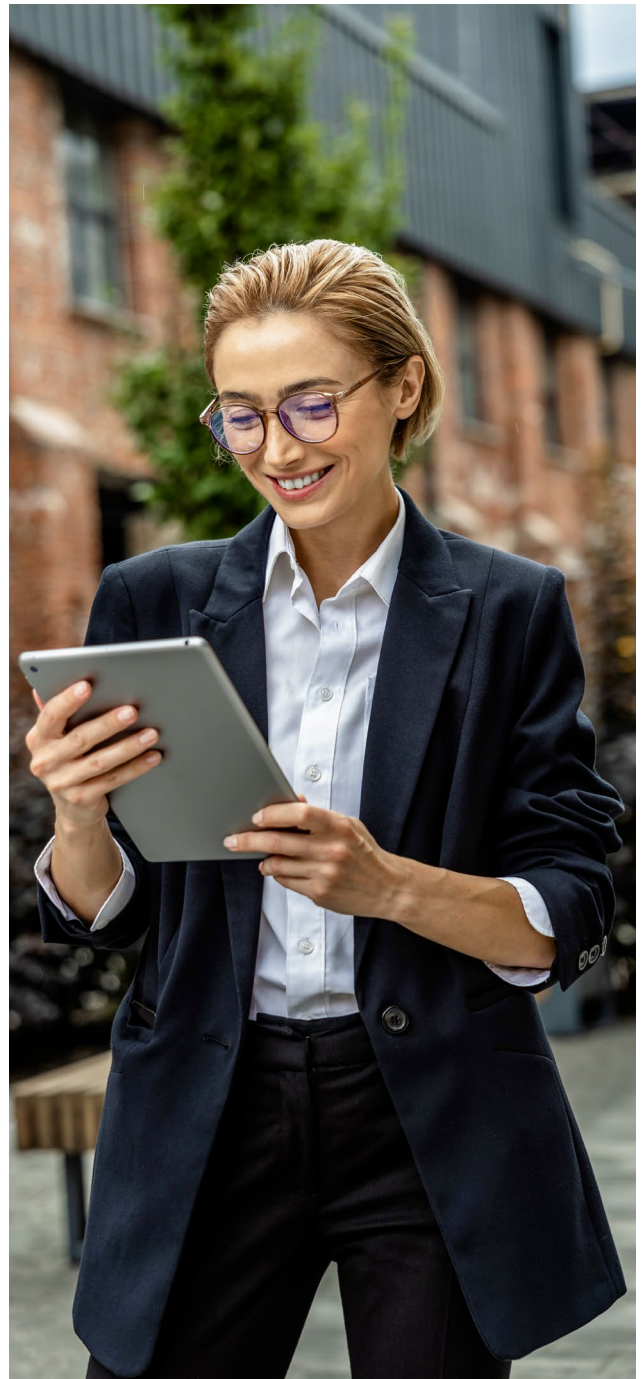
What We Offer

Hoxton Wealth is the trusted partner for schools seeking:

1. Insurance protection for a wide range of institutional risks
2. Comprehensive group medical cover for faculty and staff
3. Group life insurance and tailored benefits packages

We are committed to forming long-term partnerships. Our focus is on managing costs over time – not just at inception – so you can keep premiums sustainable year after year while safeguarding your team and reputation.

Our role is to remove the complexity of structuring group benefits and insurance plans—bringing you flexible, portable solutions aligned with your school's requirements.





Key Risks We Help Schools Address

International schools carry a wide range of responsibilities - and associated exposures. We help mitigate risk with solutions that support your operational resilience and protect your people:



Professional Liability for Educators

Cover for errors, omissions, or safeguarding concerns arising from day-to-day school operations.



Student Safety Cover

Protection against compensation claims following accidental injury on school premises.



Employment Practices Liability

Coverage for claims involving harassment, discrimination, or wrongful dismissal.



Child/Student Protection

Support in cases of unfounded allegations or reputational damage to the institution.



Cyber Liability

Protection against hacking, data breaches, and cyber threats targeting school infrastructure.



Staff Medical Needs

Top-tier medical benefits, including emergency evacuation where necessary, for all teaching and administrative staff.



Kidnap & Ransom

Coverage for abductions occurring on school property, during school trips, or via school transport.



Property & Natural Perils

Protection for school assets against events such as fire, flood, or natural disaster—plus coverage for temporary relocation.



Board of Governors Liability

Director and officer liability protection for your leadership and governance teams.

What We Offer

School Group Medical Cover

We compare your requirements to the most competitive international insurance options to find your school the best value group medical plan.

The benefits:

- First-class medical care access for staff, including medical evacuation when needed
- Cost control for your leadership team
- Greater peace of mind for teachers and families
- A stronger value proposition for staff recruitment and retention

School Group Life Insurance

We provide flexible and affordable life insurance cover for your team—protecting them and their dependents in the event of death or disability.

The benefits:

- Financial protection for employees' families
- Disability cover for illness or injury (total, permanent, or temporary)
- Support for long- and short-term disability plans
- Option to structure cover based on salary multiples or seniority



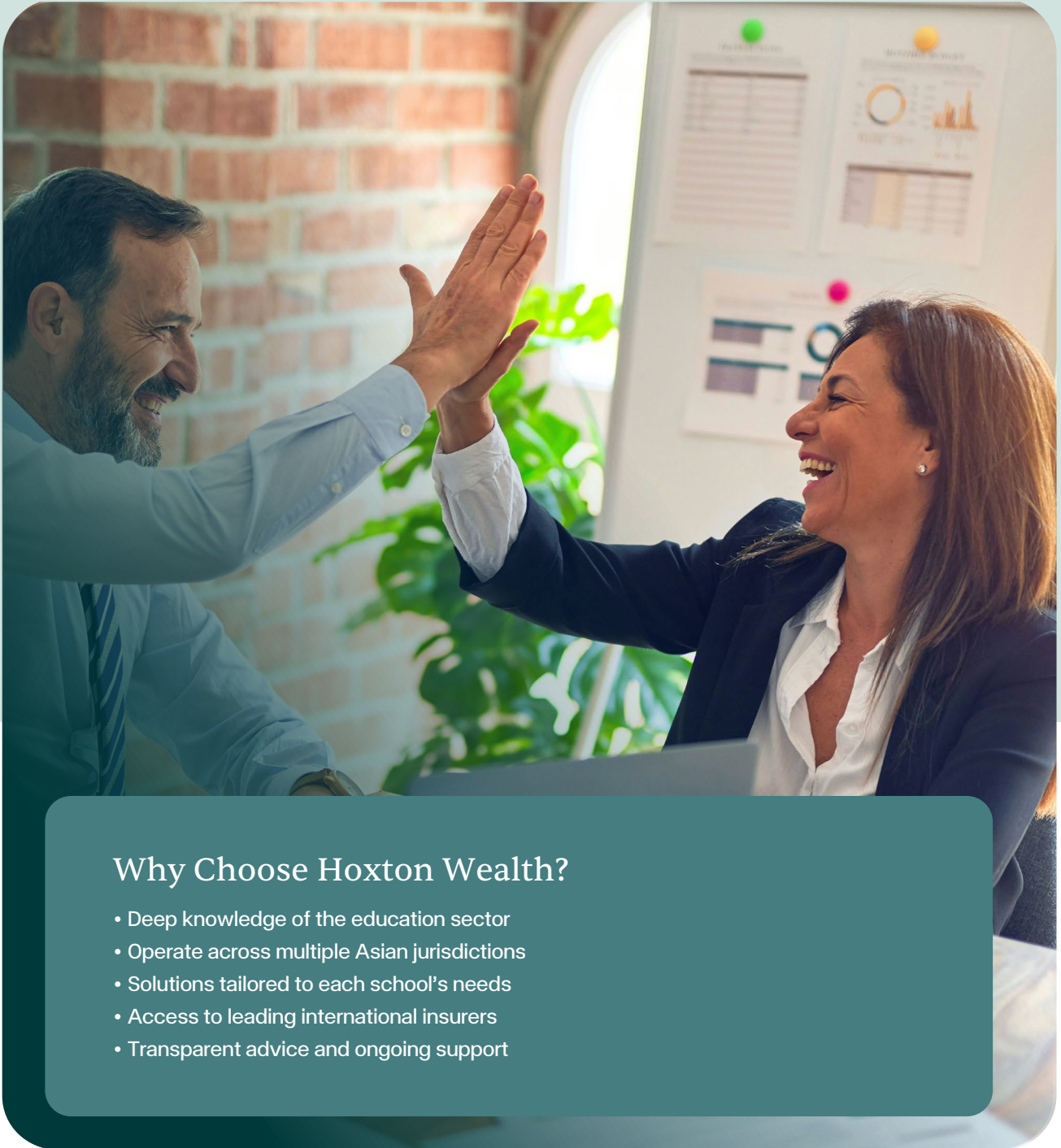


Why Employee Benefits Matter

Well-structured employee benefit programmes can dramatically improve staff satisfaction and institutional performance.

Schools with robust packages enjoy:

- Higher staff morale and wellbeing
- Greater teacher commitment
- Competitive edge in recruitment
- Improved retention
- Lower recruitment/training costs
- Continuity valued by pupils and parents



Why Choose Hoxton Wealth?

- Deep knowledge of the education sector
- Operate across multiple Asian jurisdictions
- Solutions tailored to each school's needs
- Access to leading international insurers
- Transparent advice and ongoing support

We work with leading international schools across the region to deliver clarity, confidence, and cost control in managing employee benefits and institutional risk. If you'd like to review your current arrangements or explore a bespoke proposal, we'd be happy to help.



Who Are Hoxton Wealth?

Founded in 2018, Hoxton Wealth endeavours to provide the highest possible level of service to clients worldwide.

Hoxton Wealth has quickly established itself as one of the fastest-growing independent advisory groups. Since its inception in 2018, with a team of just five people, Hoxton Wealth has grown as a group to include offices in London, Sydney, Austin, Cape Town, New Jersey, Dubai and Larnaca. From these global hubs, we support a rapidly growing client base of mostly expatriates, internationally mobile investors, and those with assets spread across borders.

Our expert advisers will
help you achieve your
financial goals efficiently.

hoxtonwealth.com



Important Information & Disclaimers

Please Read The Following Carefully

This document is published and provided by Hoxton Wealth and is intended only for persons outside the United Kingdom. It should not be deemed as personalised financial or investment advice. A regulated financial adviser/promoter in your country of residence should always be consulted before making any financial decisions.

Financial investments: you should understand that past performance can only be used as a guide and is no guarantee of future returns and that your investments can go up and down.

Any financial illustrations or funds discussed in this report could have inaccuracies and may not be relevant to the funds you end up with later.

Any funds discussed are based on hypothetical portfolios, not what any Hoxton Wealth entity recommends. A full discussion of your risk appetite and suitability will need to be conducted before any formal recommendations can be made.

This guide has been prepared for informational purposes only and is not intended to provide and should not be relied on for financial advice.

You are advised to discuss your specific circumstances with a regulated financial adviser to determine the best advice for your unique position.

This guide has been prepared for informational purposes only and is not intended to provide, and should not be relied on for, tax, legal, or accounting advice. You are advised to discuss this guide's specific tax and social security implications, if any, with your own independent professional tax, legal, and accounting advisers.

Pension accounts: you should understand that you must periodically review your pension accounts against your expectations and that any pension benefits you receive will depend on future investment returns.

Hoxton Wealth and its affiliates and employees cannot and do not provide tax, legal or accounting advice.

The information in this guide should not be construed as a suitability report.

Our Worldwide Company Information

If you are looking for specific regulated financial or investment advice from the Hoxton Wealth and affiliated companies in the place where you reside, you will be able to view the contact details across the group in the link below:

<https://hoxtonwealth.com/licencing>

This page contains the most up-to-date information for all Hoxton Wealth legal entities, regulated trading names, and authorised services by country.