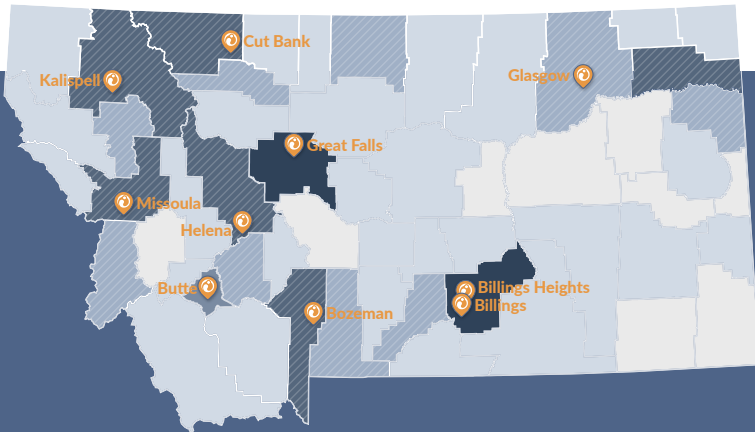


Montana Patient Outcomes

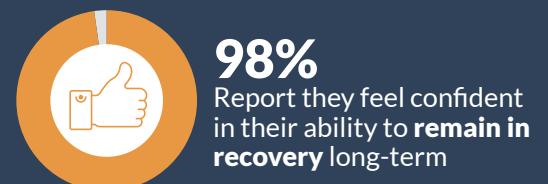
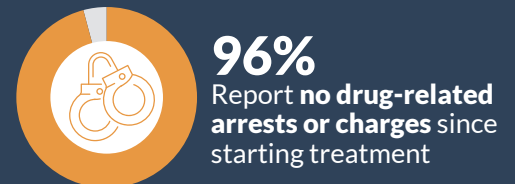
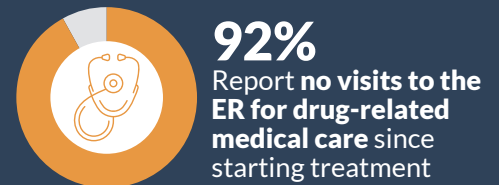
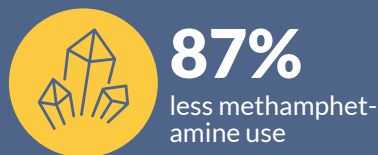
2022 ANNUAL REPORT BRIEF



With ten clinics in Montana, Ideal Option is committed to providing low-barrier treatment access to those struggling with substance use disorder.

Ideal Option's Treatment Works.

Lab testing results¹ for patients in Montana who remained in Ideal Option's treatment program and stayed on their prescribed medications show:



¹Source: Ideal Option 2022 Montana Annual Patient Outcomes Report

Stages of Care

INITIATION

New patients, re-start patients, or patients not yet stabilized on buprenorphine.



STABILIZATION A

Patients who are starting to feel stable on buprenorphine and have reduced their use of opioids.



STABILIZATION B

Patients who are stable on buprenorphine and have stopped use of opioids but may still be using other non-prescribed substances.



MAINTENANCE A

Patients who are completely stable on buprenorphine and abstinent from all non-prescribed substances.



MAINTENANCE B

Patients who have long-term stability on buprenorphine and are abstinent from all non-prescribed substances.



GRADUATION CRITERIA

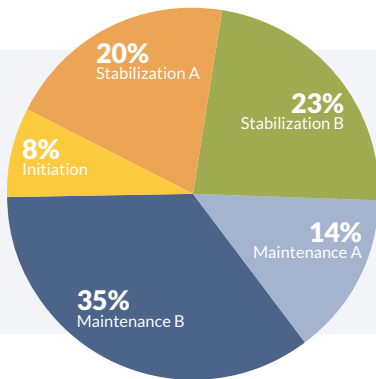
*Verified by diagnostic test

- ✓ No Withdrawal Symptoms
- ✓ Reduced Cravings
- ✓ Taking Buprenorphine*
- ✓ Reduced Opioid Use*

- ✓ No Withdrawal Symptoms
- ✓ No Cravings
- ✓ Taking Buprenorphine*
- ✓ No Opioid Use*
- ✓ No Non-Prescribed Benzos or Sedatives*

- ✓ No Withdrawal Symptoms
- ✓ No Cravings
- ✓ Taking Buprenorphine*
- ✓ No Opioid Use*
- ✓ No Non-Prescribed Benzos or Sedatives*
- ✓ No Stimulants*

- ✓ Long-term Stability
- ✓ No Withdrawal Symptoms
- ✓ No Cravings
- ✓ Taking Buprenorphine*
- ✓ No Opioid Use*
- ✓ No Non-Prescribed Benzos or Sedatives*
- ✓ No Stimulants*



Patient Census by Stage of Care

This evidence-based treatment approach leverages contingency management behavioral theory to optimize patient outcomes, and it helps to achieve clinical consistency while enabling providers to customize care and acknowledge and celebrate key milestones toward long-term recovery.



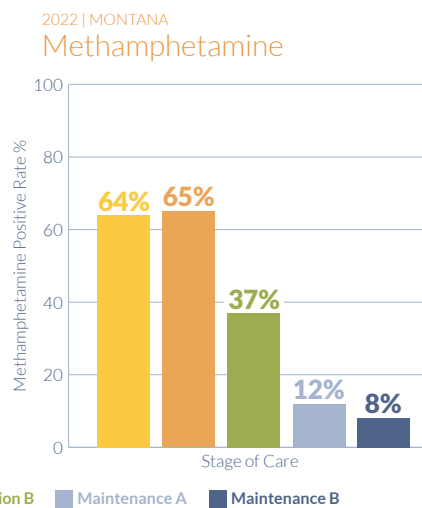
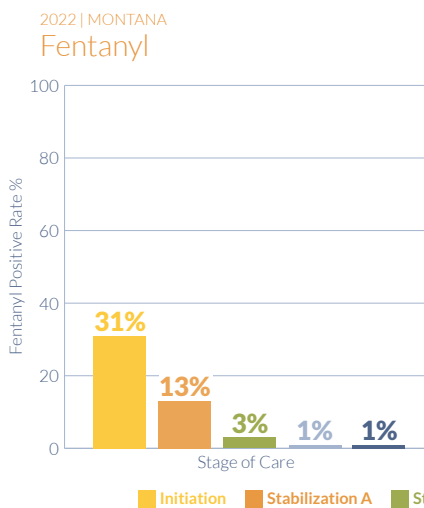
71%

Montana patients who returned for a second visit remained in treatment after 6 months

Since 2017²

²Source: Ideal Option 2022 Montana Annual Patient Outcomes Report

Ideal Option relies on lab test results as a key indicator of treatment outcomes. The accompanying charts show medication adherence, fentanyl, and methamphetamine positive rates by Stage of Care in 2022.



Medication Adherence

2022 | MONTANA

Norbuprenorphine Positive Rate by Stage of Care

