

# Maryland Patient Outcomes

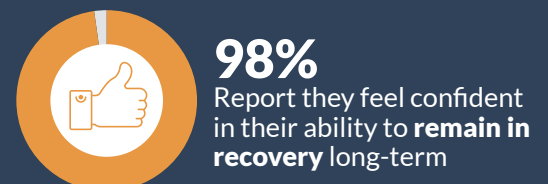
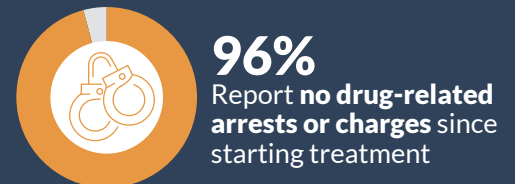
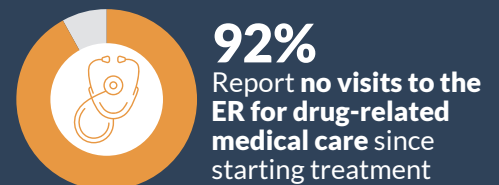
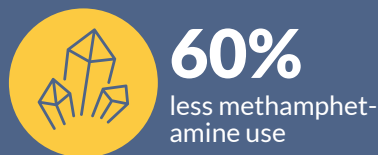
2022 ANNUAL REPORT BRIEF



With six clinics in Maryland, Ideal Option is committed to providing low-barrier treatment access to those struggling with substance use disorder.

## Ideal Option's Treatment Works.

Lab testing results<sup>1</sup> for patients in Maryland who remained in Ideal Option's treatment program and stayed on their prescribed medications show:



<sup>1</sup>Source: Ideal Option 2022 Maryland Annual Patient Outcomes Report

## Stages of Care

### INITIATION

New patients, re-start patients, or patients not yet stabilized on buprenorphine.



### STABILIZATION A

Patients who are starting to feel stable on buprenorphine and have reduced their use of opioids.



### STABILIZATION B

Patients who are stable on buprenorphine and have stopped use of opioids but may still be using other non-prescribed substances.



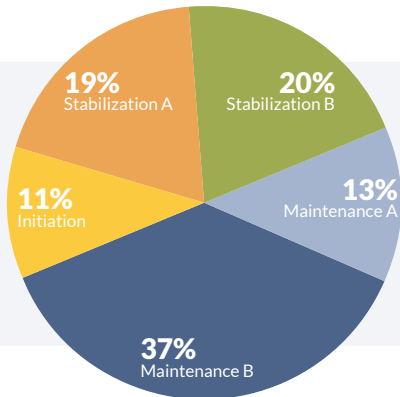
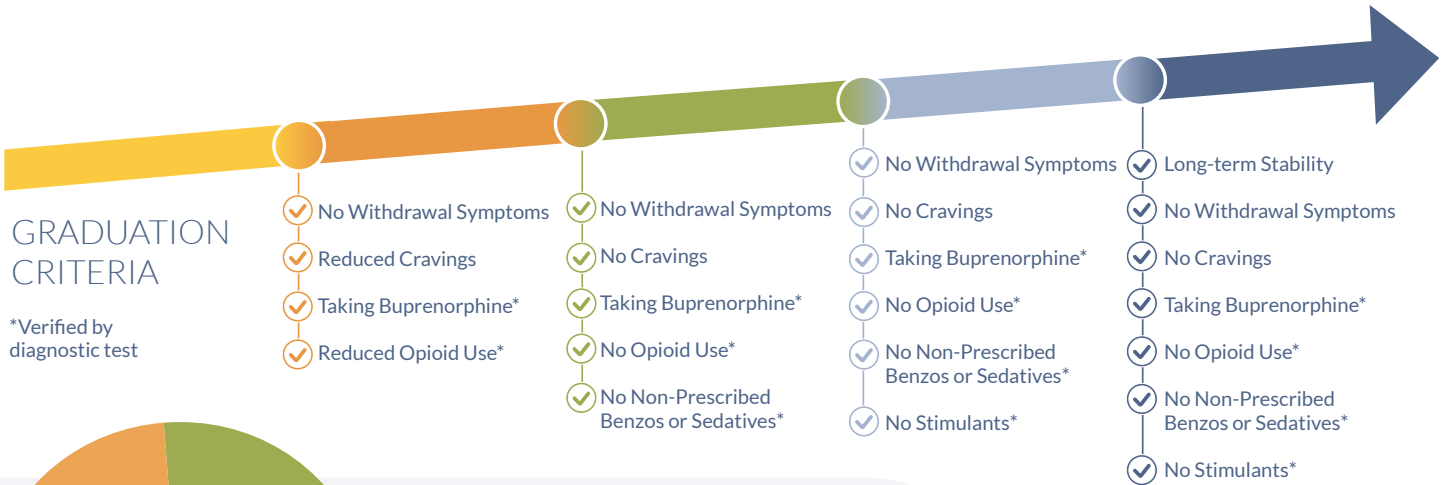
### MAINTENANCE A

Patients who are completely stable on buprenorphine and abstinent from all non-prescribed substances.



### MAINTENANCE B

Patients who have long-term stability on buprenorphine and are abstinent from all non-prescribed substances.



### Patient Census by Stage of Care

This evidence-based treatment approach leverages contingency management behavioral theory to optimize patient outcomes, and it helps to achieve clinical consistency while enabling providers to customize care and acknowledge and celebrate key milestones toward long-term recovery.



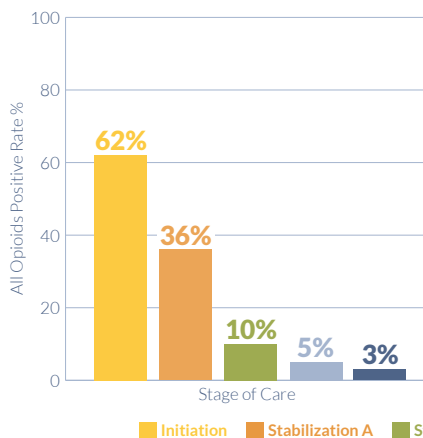
**59%**

Maryland patients who returned for a second visit remained in treatment after 6 months Since 2017<sup>2</sup>

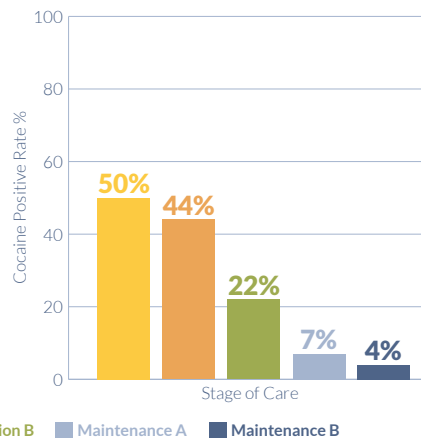
<sup>2</sup>Source: Ideal Option 2022 Maryland Annual Patient Outcomes Report

Ideal Option relies on lab test results as a key indicator of treatment outcomes. The accompanying charts show medication adherence, all opioids, and cocaine positive rates by Stage of Care in 2022.

2022 | MARYLAND  
All Opioids



2022 | MARYLAND  
Cocaine



### Medication Adherence

2022 | MARYLAND

Norbuprenorphine Positive Rate by Stage of Care

