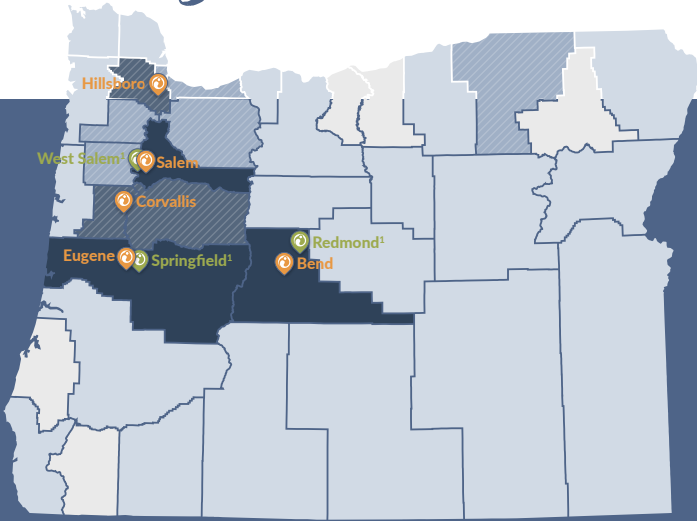


Oregon Patient Outcomes

2022 ANNUAL REPORT BRIEF

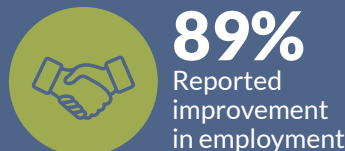
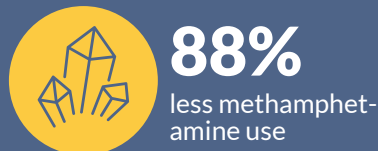
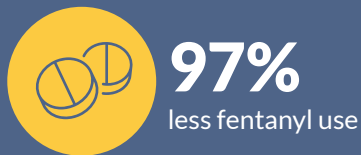


¹Opened in 2023

With eight clinics in Oregon, Ideal Option is committed to providing low-barrier treatment access to those struggling with substance use disorder.

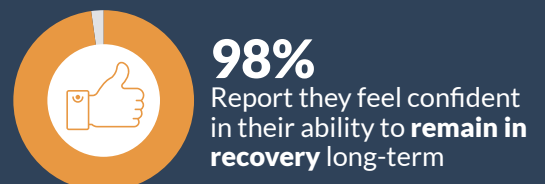
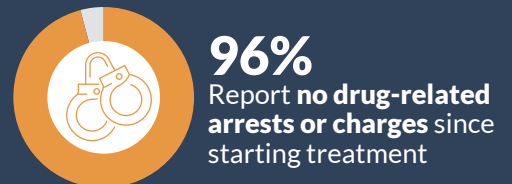
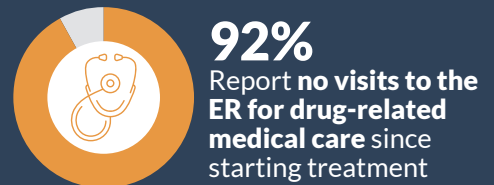
Ideal Option's Treatment Works.

Lab testing results¹ for patients in Oregon who remained in Ideal Option's treatment program and stayed on their prescribed medications show:



Ideal Option has been providing evidence-based treatment for substance use disorder using FDA-approved medications – the gold standard in addiction treatment – for more than 10 years.

Self-reported outcomes gathered via survey of over 2,100 Ideal Option patients after a minimum of 6 months of treatment show:



¹Source: Ideal Option 2022 Oregon Annual Patient Outcomes Report

Stages of Care

INITIATION

New patients, re-start patients, or patients not yet stabilized on buprenorphine.

 **2 Visits Every WEEK**

STABILIZATION A

Patients who are starting to feel stable on buprenorphine and have reduced their use of opioids.

 **1 Visit Every WEEK**

STABILIZATION B

Patients who are stable on buprenorphine and have stopped use of opioids but may still be using other non-prescribed substances.

 **1 Visit Every 2 WEEKS**

MAINTENANCE A

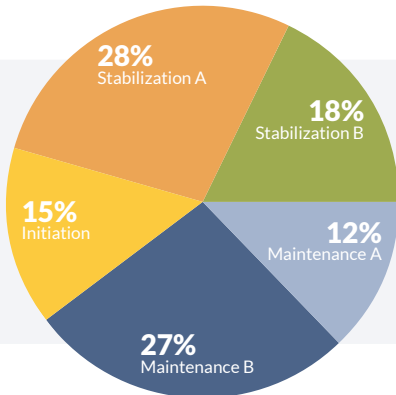
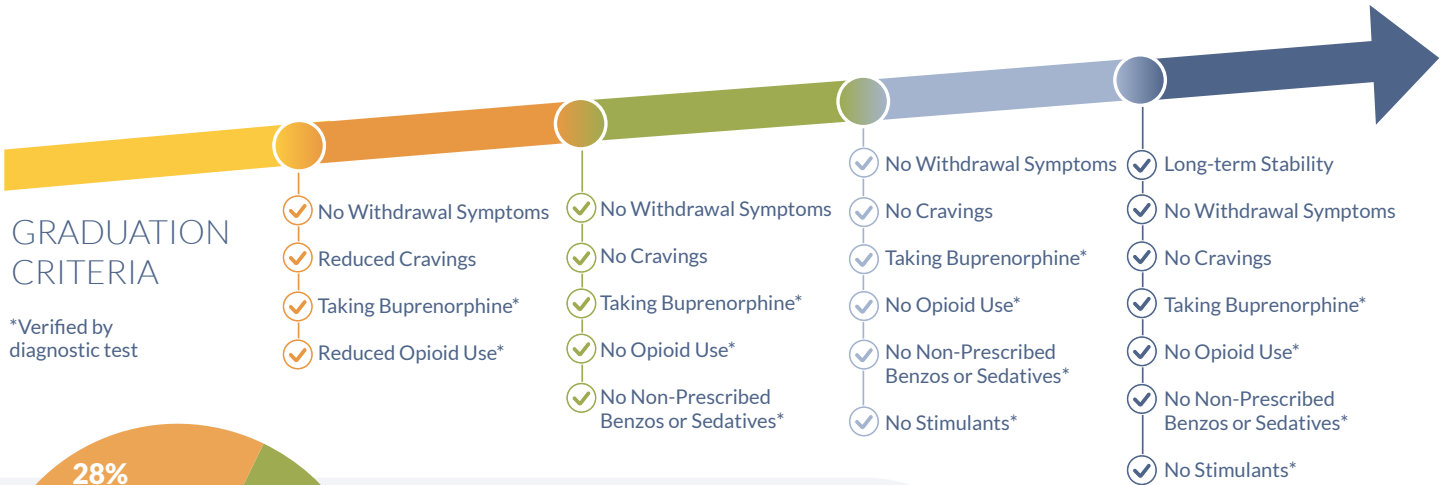
Patients who are completely stable on buprenorphine and abstinent from all non-prescribed substances.

 **1 Visit Every 3 WEEKS**

MAINTENANCE B

Patients who have long-term stability on buprenorphine and are abstinent from all non-prescribed substances.

 **1 Visit Every MONTH**



Patient Census by Stage of Care

This evidence-based treatment approach leverages contingency management behavioral theory to optimize patient outcomes, and it helps to achieve clinical consistency while enabling providers to customize care and acknowledge and celebrate key milestones toward long-term recovery.

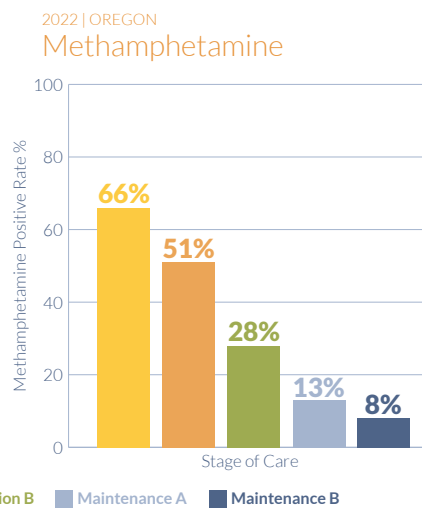
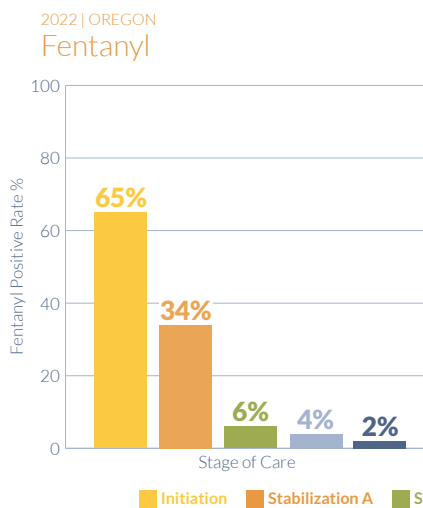


65%

Oregon patients who returned for a second visit remained in treatment after 6 months
Since 2017²

²Source: Ideal Option 2022 Oregon Annual Patient Outcomes Report

Ideal Option relies on lab test results as a key indicator of treatment outcomes. The accompanying charts show medication adherence, fentanyl, and methamphetamine positive rates by Stage of Care in 2022.



Medication Adherence

2022 | OREGON

Norbuprenorphine Positive Rate by Stage of Care

