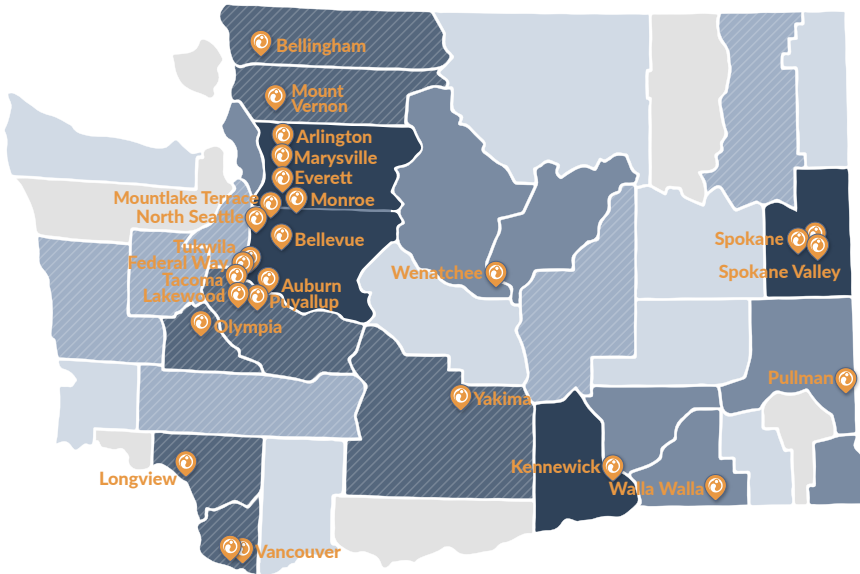


Annual Report Brief

PATIENT OUTCOMES

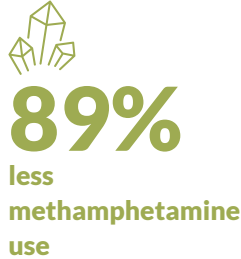
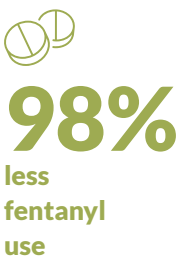
Ideal Option provides low-barrier treatment to people struggling with substance use disorder.



Ideal Option's Treatment Works.

Lab testing results¹ for patients who remained in Ideal Option's treatment program and stayed on their prescribed medications show:

Treatment Works²

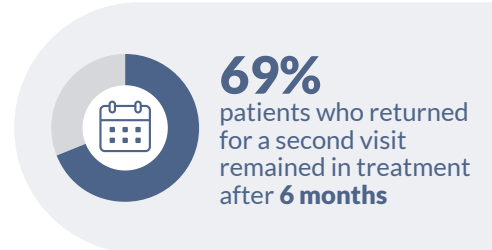
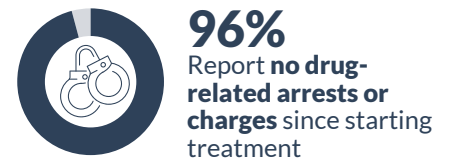
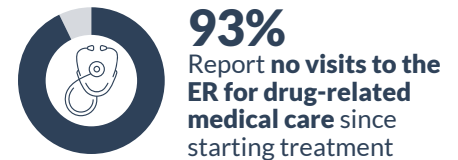
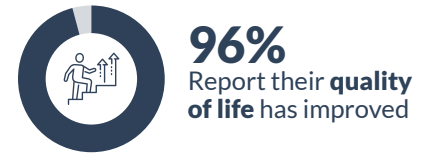


Life Improves³



Ideal Option has been providing evidence-based treatment for substance use disorder using FDA-approved medications – the gold standard in addiction treatment – for more than 10 years.

Self-reported outcomes gathered via survey of over 1,800 Ideal Option patients after a minimum of 6 months of treatment show:



¹Source: Ideal Option 2023 Annual Patient Outcomes Report

²The reduction in positive tests for all patients during 2023 at the Maintenance B Stage of Care compared to at the Initiation Stage of Care

³2023 Ideal Option Self-Reported Patient Outcomes Survey

Stages of Care

INITIATION

New patients, re-start patients, or patients not yet stabilized on buprenorphine.

 **2 Visits Every WEEK**

STABILIZATION A

Patients who are starting to feel stable on buprenorphine and have reduced their use of opioids.

 **1 Visit Every WEEK**

STABILIZATION B

Patients who are stable on buprenorphine and have stopped use of opioids but may still be using other non-prescribed substances.

 **1 Visit Every 2 WEEKS**

MAINTENANCE A

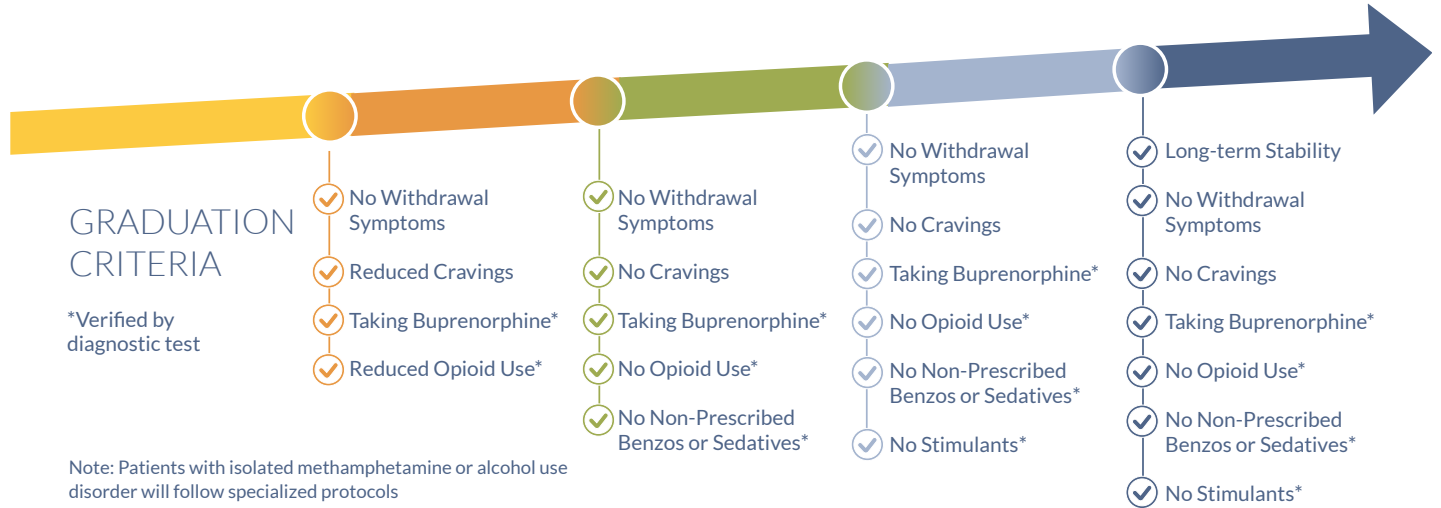
Patients who are completely stable on buprenorphine and abstinent from all non-prescribed substances.

 **1 Visit Every 3 WEEKS**

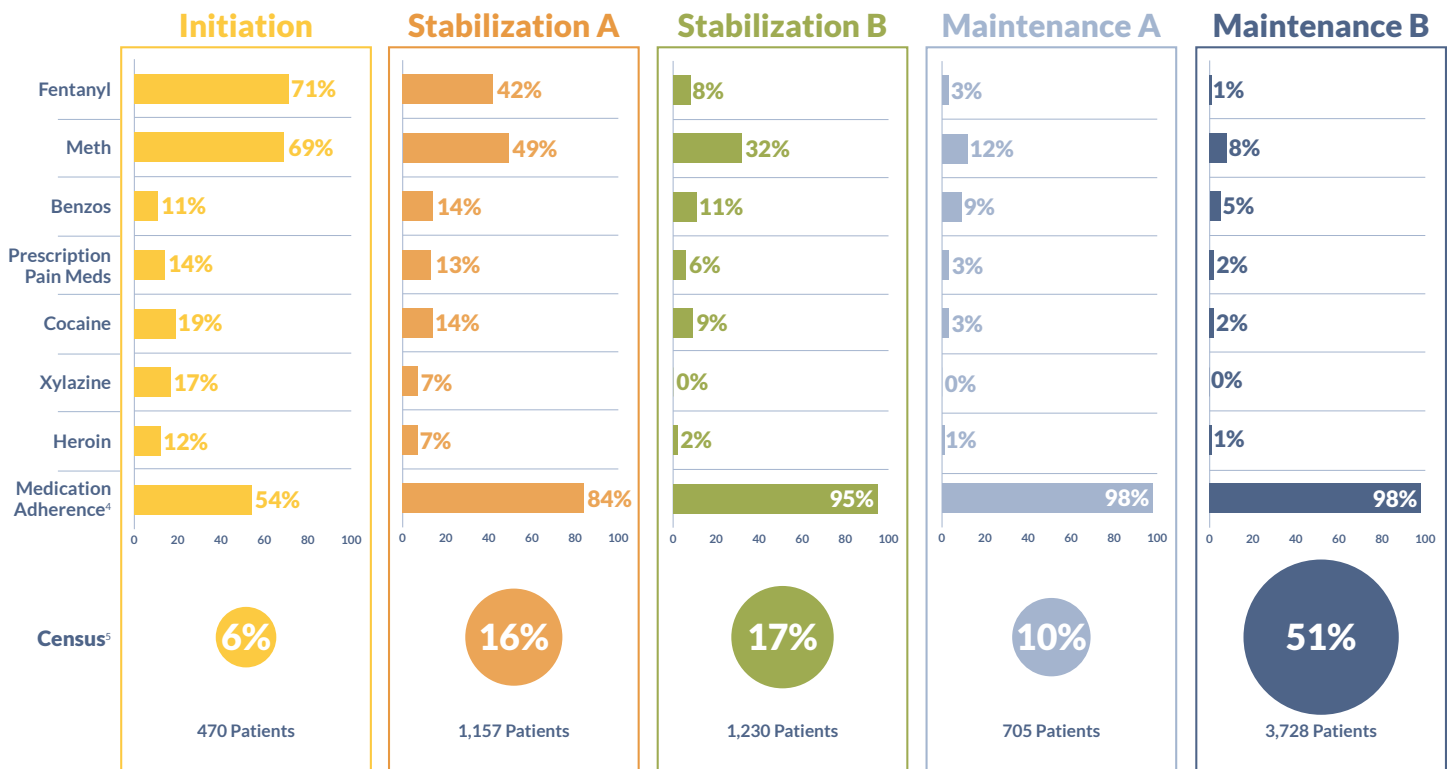
MAINTENANCE B

Patients who have long-term stability on buprenorphine and are abstinent from all non-prescribed substances.

 **1 Visit Every MONTH**



Average Positive Rates by Stage of Care



⁴ Medication adherence refers to the positive test result for norbuprenorphine, the metabolite of buprenorphine.

⁵ The Census by Stage of Care as of 12/31/2023 was 7,290 patients.