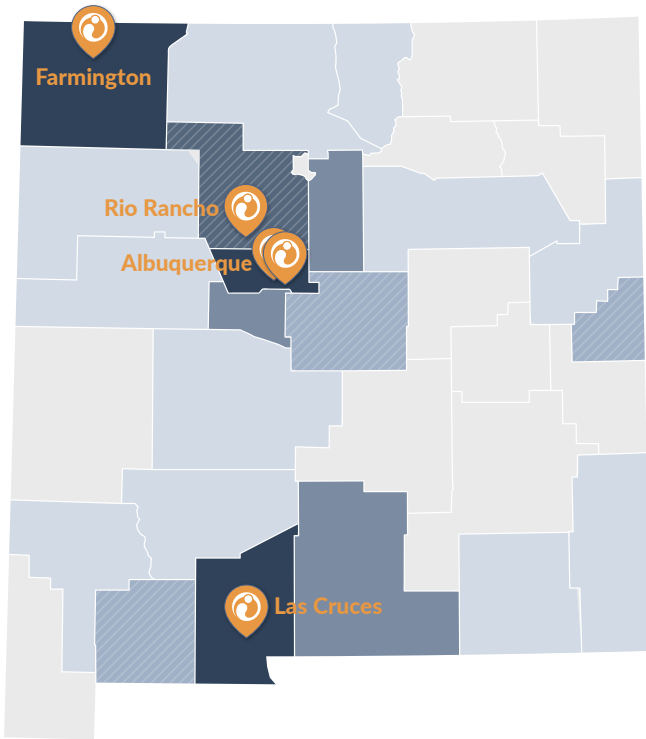


*Annual Report Brief*

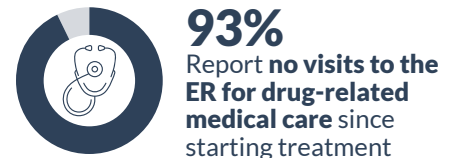
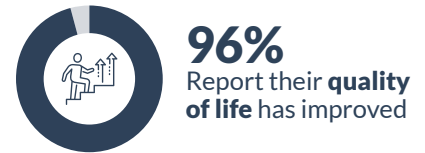
# PATIENT OUTCOMES

Ideal Option provides low-barrier treatment to people struggling with substance use disorder.



Ideal Option has been providing evidence-based treatment for substance use disorder using FDA-approved medications – the gold standard in addiction treatment – for more than 10 years.

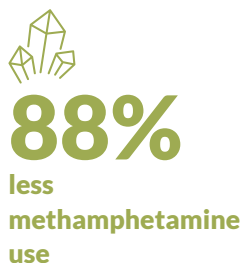
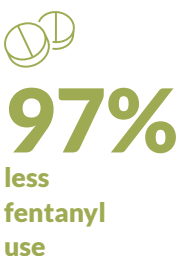
Self-reported outcomes gathered via survey of over 1,800 Ideal Option patients after a minimum of 6 months of treatment show:



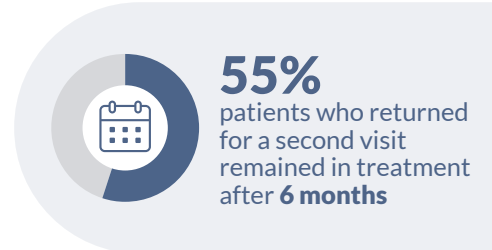
## Ideal Option's Treatment Works.

Lab testing results<sup>1</sup> for patients who remained in Ideal Option's treatment program and stayed on their prescribed medications show:

### Treatment Works<sup>2</sup>



### Life Improves<sup>3</sup>



<sup>1</sup>Source: Ideal Option 2023 Annual Patient Outcomes Report

<sup>2</sup>The reduction in positive tests for all patients during 2023 at the Maintenance B Stage of Care compared to at the Initiation Stage of Care

<sup>3</sup>2023 Ideal Option Self-Reported Patient Outcomes Survey

## Stages of Care

### INITIATION

New patients, re-start patients, or patients not yet stabilized on buprenorphine.

 **2 Visits Every WEEK**

### STABILIZATION A

Patients who are starting to feel stable on buprenorphine and have reduced their use of opioids.

 **1 Visit Every WEEK**

### STABILIZATION B

Patients who are stable on buprenorphine and have stopped use of opioids but may still be using other non-prescribed substances.

 **1 Visit Every 2 WEEKS**

### MAINTENANCE A

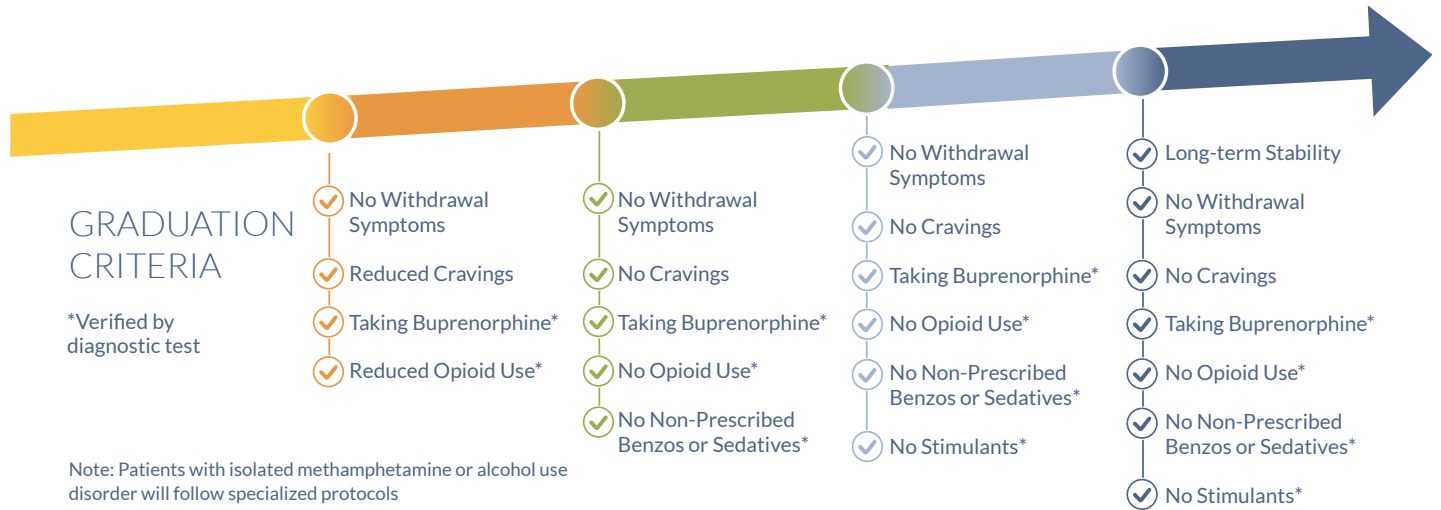
Patients who are completely stable on buprenorphine and abstinent from all non-prescribed substances.

 **1 Visit Every 3 WEEKS**

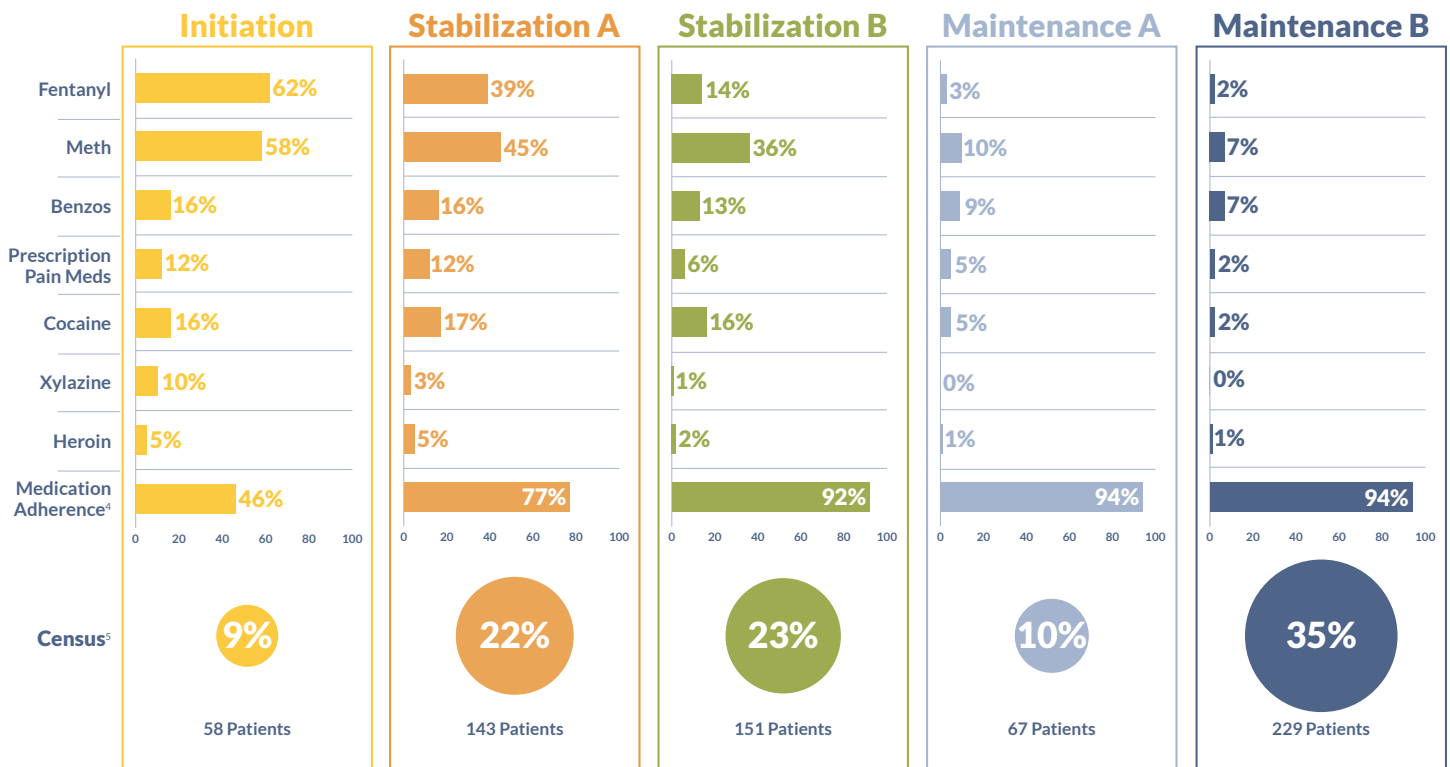
### MAINTENANCE B

Patients who have long-term stability on buprenorphine and are abstinent from all non-prescribed substances.

 **1 Visit Every MONTH**



## Average Positive Rates by Stage of Care



<sup>4</sup> Medication adherence refers to the positive test result for norbuprenorphine, the metabolite of buprenorphine.

<sup>5</sup> The Census by Stage of Care as of 12/31/2023 was 648 patients.