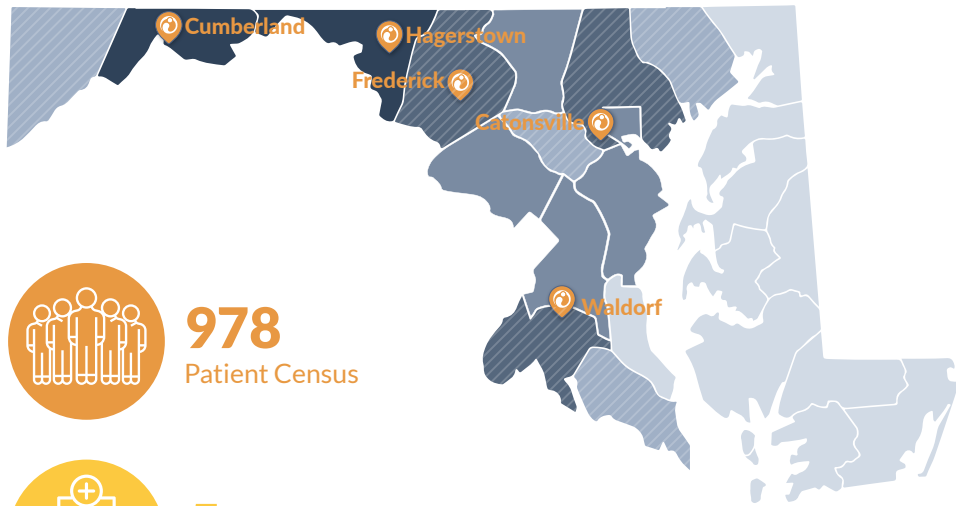


Annual Report Brief

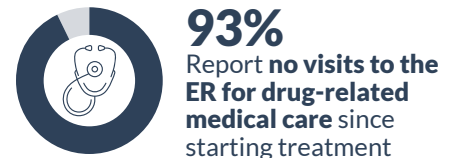
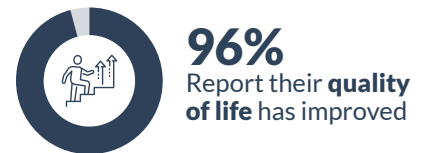
PATIENT OUTCOMES

Ideal Option provides low-barrier treatment to people struggling with substance use disorder.



Ideal Option has been providing evidence-based treatment for substance use disorder using FDA-approved medications – the gold standard in addiction treatment – for more than 10 years.

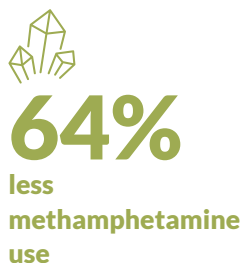
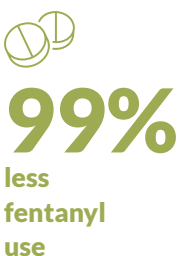
Self-reported outcomes gathered via survey of over 1,800 Ideal Option patients after a minimum of 6 months of treatment show:



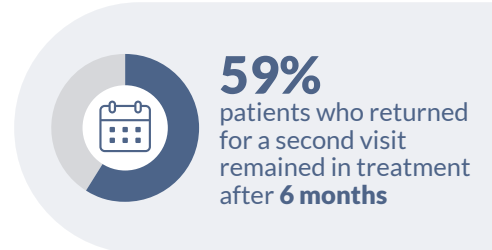
Ideal Option's Treatment Works.

Lab testing results² for patients who remained in Ideal Option's treatment program and stayed on their prescribed medications show:

Treatment Works³



Life Improves⁴



¹Excludes three clinics closed in early 2024

²Source: Ideal Option 2023 Annual Patient Outcomes Report

³The reduction in positive tests for all patients during 2023 at the Maintenance B Stage of Care compared to at the Initiation Stage of Care

⁴2023 Ideal Option Self-Reported Patient Outcomes Survey

Stages of Care

INITIATION

New patients, re-start patients, or patients not yet stabilized on buprenorphine.

2 Visits Every WEEK

STABILIZATION A

Patients who are starting to feel stable on buprenorphine and have reduced their use of opioids.

1 Visit Every WEEK

STABILIZATION B

Patients who are stable on buprenorphine and have stopped use of opioids but may still be using other non-prescribed substances.

1 Visit Every 2 WEEKS

MAINTENANCE A

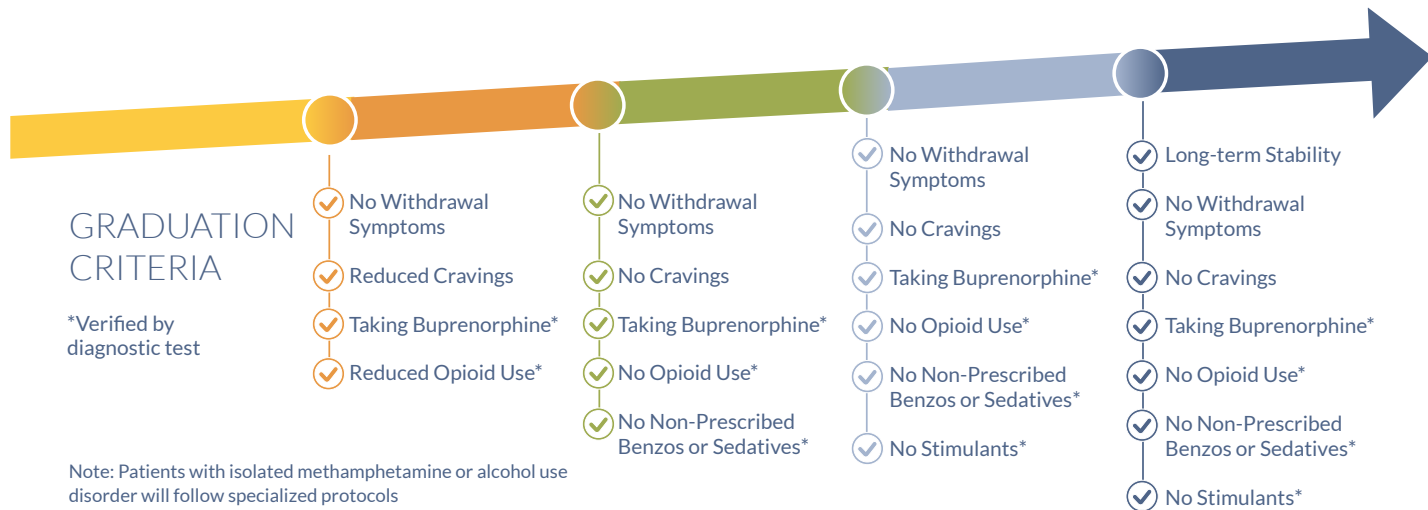
Patients who are completely stable on buprenorphine and abstinent from all non-prescribed substances.

1 Visit Every 3 WEEKS

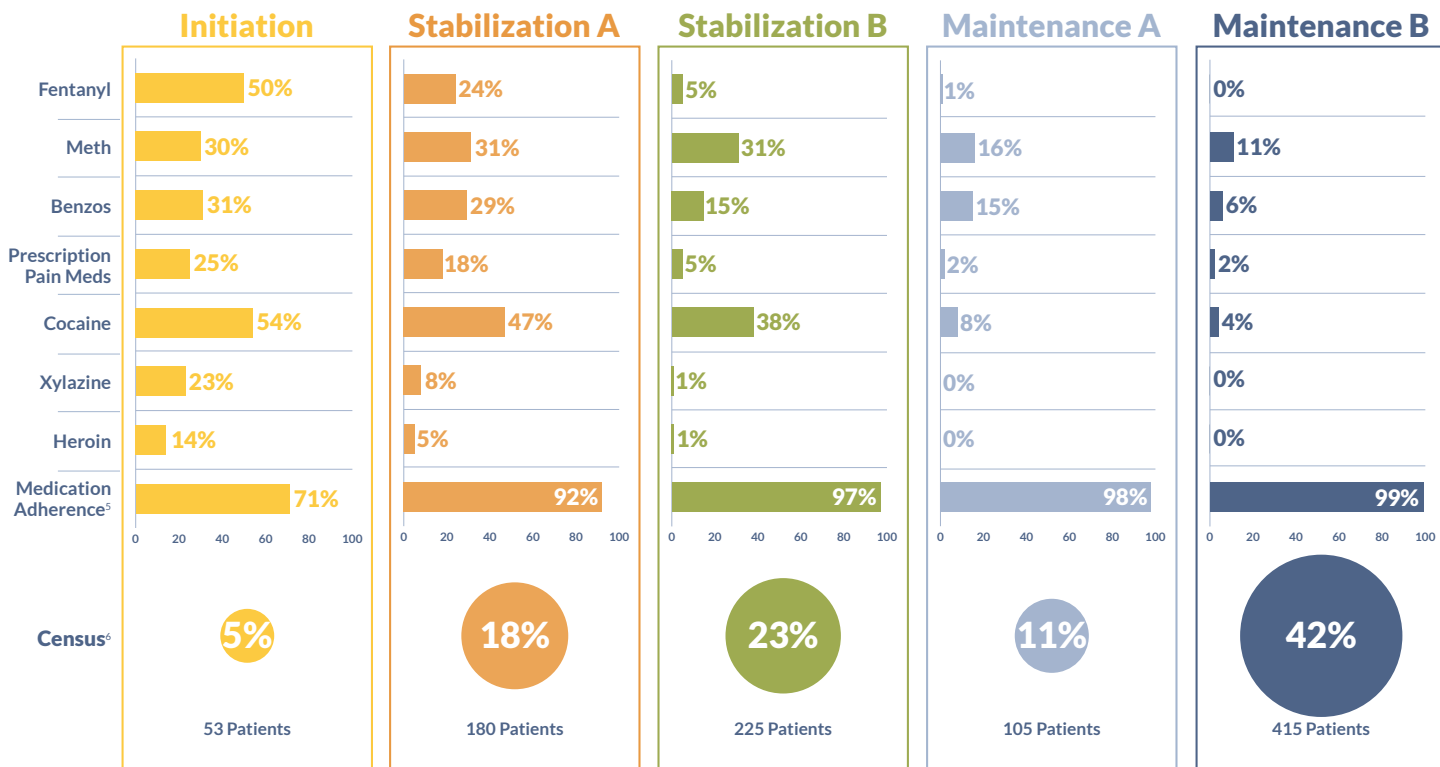
MAINTENANCE B

Patients who have long-term stability on buprenorphine and are abstinent from all non-prescribed substances.

1 Visit Every MONTH



Average Positive Rates by Stage of Care



⁵Medication adherence refers to the positive test result for norbuprenorphine, the metabolite of buprenorphine.

⁶The Census by Stage of Care as of 12/31/2023 was 978 patients.